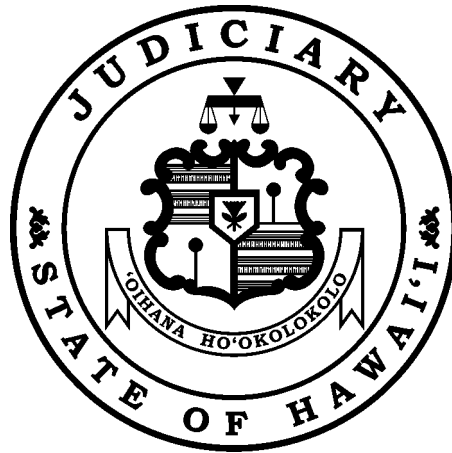

The Judiciary State of Hawai'i



2001 Annual Report

*The mission of the Judiciary,
as an independent branch of
government, is to administer
justice in an impartial, efficient,
and accessible manner in
accordance with the law.*

I am pleased to provide the Judiciary's 2001 Annual Report detailing the work of the State of Hawaii's third branch of government. The first full year of the new millennium has been a very productive time for the Judiciary—a year that has laid a solid foundation for the 21st Century.

As this report demonstrates, the men and women who work in the court system continue their untiring efforts to serve the people of Hawai'i. Individually and collectively, these dedicated individuals strive to meet the mission of the Judiciary, recognizing that what they do may have life-long consequences for the people involved. I am proud of the work they do and extend my warmest *mahalo* and appreciation to our employees, as well as to the many volunteers who unselfishly contribute their time to lessen some of the extra burdens on our staff and to serve the people of Hawai'i.

I also want to thank the Governor and members of the Legislature for their continued support of our efforts to build a dynamic and progressive judicial system. Our work would not be possible without their help. This annual report reflects that cooperation and partnership.



Ronald T. Y. Moon
Chief Justice
Hawai'i Supreme Court

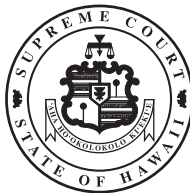


Table of Contents

MONTH-BY-MONTH HIGHLIGHTS	1
STRUCTURE OF THE JUDICIARY	
Court System	7
Administrative System	8
NEW JUDICIAL APPOINTMENTS	9
COURTS OF APPEAL	11
Supreme Court	14
Intermediate Court of Appeals	16
Land Court	18
Tax Appeal Court	18
TRIAL COURTS	19
Circuit Courts	20
Family Courts	24
District Courts	28
Per Diem Judges	30
SUPPORT SERVICES	31
FINANCIAL RESOURCES	32

Month-By-Month Highlights

JANUARY

29 State Judges Evaluated

The summarized aggregate performance evaluation results of 29 state judges were released in the “Sixth Report on the Judicial Performance Program.” Overall, the judges performed well in all areas evaluated.

The judges are the first group to be interviewed by a Judicial Evaluation Review Panel sub-divided into three groups to counsel judges from the Circuit, Family, and District Courts. Each group consisted of one former judge, one non-practicing attorney, and one member of the public.

APRIL

Groundbreaking for New Kāne’ohe Courthouse

On April 11, the Judiciary broke ground on the new Kāne’ohe Courthouse at its future site, at the intersection of Po’okela Street and Kea’ahala Road, near Windward Community College and the Hawai’i State Hospital.

This will be the first Judiciary facility built since the 1987 construction of the Lahaina District Court facility on Maui. The

courthouse is being constructed on a two-acre portion of state-owned land, which was originally part of the Hawai’i State Hospital campus.

The total construction cost will be \$9.3 million, which was appropriated by the Legislature. The facility will have two courtrooms, improved public and staff areas, and secure holding facilities. Completion of construction is projected for fall 2002.

The courthouse is named after one of the original Hawai’i Supreme Court justices, Justice Abner Paki.

District Court Concierge Center Dedicated

The new Honolulu District Court Concierge Center, located on the plaza of the courthouse on Alakea Street, was officially dedicated on April 17.

The Concierge program is a component of the Ho’okele Court Navigation Project, which the Judiciary launched in 2000 to help court users work their way through the system without legal representation. In addition to providing directions, Concierge staff help

identify the nature of a court user’s problem, locate the program to provide the needed assistance, and refer the user to the proper Judiciary program or to an outside agency, where appropriate.

The Center is the last of the four Ho’okele stations to be fully operational.



Judiciary officials and representatives of the contractor and the Department of Accounting and General Services break ground for the new Kāne’ohe District Court.

Month-By-
Month
Highlights



Chief Justice Ronald Moon (left), Jean Yamane, district court administrator, and Judge George Kimura, district court administrative judge, untie the ribbon at the District Court Concierge Center's dedication ceremony.

Two stations are at Ka'ahumanu Hale and the third at Kauikeaouli Hale. In its first week of full-time operation, the District Court Concierge Center assisted more than 400 people.

MAY

Judiciary Commemorates Law Day, May 1

The Judiciary commemorated Law Day by initiating several publicity events focusing on the Law Day theme, "Protecting the Best Interests of Our Children." The objective of the Judiciary's Law Day events was to promote greater public understanding of, and appreciation for, how the judicial and legal systems strive to protect the best interests of all children.

During the first week of May, Hawaii's largest daily newspaper, the *The Honolulu Advertiser*, published articles authored by state judges. The topics of the articles and the judges who authored them are: "What Best Interests of the Child" Means, Chief Justice Ronald Moon; Making Domestic Relations Cases More Child

Focused, Judge Diana Warrington; *The Use of the Law to Protect Abused and Neglected Children*, Judge Ken Enright; *The Jurisdiction of the Juvenile Court*, Judge Eric Romanchak; and VGAL, *Project Visitation, and Other Opportunities for Community Service*, Judge Mark Browning.

Dan Boylan, host of "Island Insights," interviewed Senior Family Court Judge Frances Wong about the juvenile justice system. The half-hour program aired on Hawaii'i Public Television.

Judge Allene Suemori appeared on KHON-TV's "Family Roundtable" program on May 2, and spoke on the topic of children and divorce.

The Judiciary provided copies of several informational brochures to the Young Lawyers Division of the Hawaii'i State Bar Association for distribution to members of the public who visited the Young Lawyers' legal clinic booths set up at various sites throughout the state on Saturday, May 5.

The Judiciary History Center added three new lessons to the existing "Judges in the Classroom" curriculum. A new lesson was developed for each of the elementary, middle, and secondary school levels.

Alm Sworn in as Circuit Judge

Steven S. Alm was sworn in as a judge of the Circuit Court of the First Judicial Circuit on May 14.

Senda and Cooper Sworn In

On May 4, Trudy Senda was sworn in as a judge of the District Court of the Fifth Judicial Circuit.

A swearing-in ceremony for Reinette Cooper was held on May 7. Judge Cooper presides in the District Court of the Second Judicial Circuit.

Month-By- Month Highlights

JUNE

Judges Learn About Genetic Issues

State judges attended a three-day conference to learn about the latest in scientific and health-related genetic issues that could arise in Hawaii's courts. The conference was made possible by a \$25,000 grant from the Einstein Institute for Science, Health and the Courts.

Internationally-recognized experts conducted training on such topics as DNA forensic and criminal evidence; genetic advances on improving inherited characteristics; statutes on genetics disputes; genetics testing and gene therapy practices; and human experimentation and cloning.

JULY

ABOTA Premieres Video on Judicial Independence

The members of the Hawaii Chapter of the American Board of Trial Advocates (ABOTA) sponsored a video entitled "Broken Scales: Justice Under Influence." ABOTA presented the video to the Judiciary to facilitate its ongoing efforts to educate the public about the Judiciary's role in the American system of government.

Through a role-playing scenario, the video depicts a man's journey through a nightmarish world where one of the

cornerstones of democracy -- judicial independence -- has crumbled. The man is awakened to a new understanding of and appreciation for an independent judiciary, one free of outside influences.

New Graduated Scale Charge For Delinquent Traffic Fines

A new, graduated late fee for delinquent traffic fines became effective July 1. The change allows all partial payments to be applied to the amount of the fine and applies the late fee only once -- when the fine is paid off. The maximum late fee that may be charged as a percentage of the traffic fine owed, or judgment, remains the same.

Division of Driver Education

The Division of Driver Education moved to 1001 Bishop Street in the Pacific Tower at Bishop Square. Remodeling of the new site and moving took place in June and July, and opening to the public for appointments began in July.

The self-sufficiency of the special fund that operates the driver's education program made the move possible, allowing other Judiciary programs operating on general funds to use the much-needed space.

Driver Education offices on Maui, Kaua'i, and in Hilo and Kona also have been re-equipped with new computers that have intranet and internet connectivity where possible.



Chief Justice Ronald Moon speaks at the premiere of the video, "Broken Scales: Justice Under Influence." In the video, the Chief Justice discusses judicial independence and its importance in our democratic way of life.

Month-By-
Month
Highlights

AUGUST

Adult Probation Offers More Services to Victims

Federal funds received through the Victims of Crime Act have made possible the availability of a victim services coordinator for the First Circuit Court. This coordinator answers victims' questions or concerns about offenders who have gone to court and are pending sentencing or have already been sentenced to probation. The coordinator



Family Court Judge Karen Radius speaks to television reporters about the newly launched Juvenile Drug Court.

helps victims complete victim impact statements and answers questions about requests for restitution or restitution payments owed by defendants on probation.

Children's Advocacy Centers Renamed "Children's Justice Centers"

The Judiciary's Children's Advocacy Centers changed their name to "Children's Justice Centers" to better reflect the mission of the program. With the name change, the program has expanded to include cases of serious physical abuse and child witnesses to crimes such as domestic violence and homicide.

Juvenile Drug Court Launched on O'ahu

The O'ahu Family Court launched the Juvenile Drug Court, a minimum eight-month treatment-based program for substance abusing, nonviolent juveniles under 18 years of age. Juvenile Drug Court officials anticipate 90 participants during the first year.

To be eligible for the program, juveniles must be 12 to 17 years of age; referred to the Family Court for nonviolent law violation; have a current pattern of substance abuse and not have a history of sex offenses; and live on O'ahu and be under the jurisdiction of the Family Court. Referrals are made from Family Court, the prosecutor and public defender's offices, the Honolulu Police Department, Department of Health, and other agencies.

A juvenile must have the support of an adult who agrees to participate in Juvenile Drug Court activities, which include frequent hearings, drug testing, and family counseling.

SEPTEMBER

Administrative Director Resigns from Judiciary

After working for the State of Hawai'i for more than 11 years, the last five as the administrative director of the courts, on September 28, Michael Broderick left the Judiciary to become the executive director of the Hawai'i Justice Foundation.

Month-By-Month Highlights

OCTOBER

Ozawa Named Administrative Director

In October, Walter M. Ozawa became the new administrative director of the courts. He previously was the director of the State Office of Veterans Services, a position he held since 1996. Prior to that, he served as a deputy director at the state Department of Public Safety and as the director of the City and County of Honolulu's Department of Parks and Recreation.

Judiciary Employees Honored for Outstanding Service

Chief Justice Ronald Moon recognized 16 Judiciary employees for their outstanding contributions to the state court system.

Recipients of the individual and group Meritorious Service Awards are: **Haruo Higuchi**, Telecommunication & Information Services Division, Office of the Administrative Director; **Susan Kitsu**, Affirmative Action Office, Office of the Administrative Director; **Florita Querubin**, Office of the District Court Administrator, District Court of the Fifth Circuit (Kaua'i); **Legal Research and Adoption Records**, Family Court of the First Circuit (O'ahu), and **Team Restorative Justice**, Family Court of the Third Circuit (Hawai'i).

Recipients of the Spirit of the Judiciary Awards are: **Renee Catalan**, Children and Youth Services Branch, Leeward Section, Family Court of the First Circuit; **Jean Kikumoto**, Legislative Coordination/Special Projects Office, Office of the Administrative Director; **Sondra Onaka**, Adult Probation, First Circuit Court; **Marilyn Siaw**, Adult Probation, Fifth Circuit Court; and **Jill Sakamoto**, Office of the Director, Family Court of the First Circuit.



Walter Ozawa, left, new administrative director of the courts, and Nathan Kim, fiscal and support services division chief, who assumed the additional responsibility as deputy administrative director of the courts, discuss the day's schedule.

Certificates of Commendation were awarded to **Gaye Flores**, Children and Youth Services Branch, Foster Parenting Program, Family Court of the First Circuit; **Glori-Jean Kamealoha**, Wai'anae Division, District Court of the First Circuit; **Gerald Oyasato**, Probation Branch, District Court of the First Circuit; and **Robert Soto**, Administrative Driver's License Revocation Office, Office of the Administrative Director.

In the group category, Certificates of Commendation were presented to the **Adult Probation Division**, Fifth Circuit Court, and the **Fiscal and Support Services Office**, Systems Accounting Section, Office of the Administrative Director.

Month-By-
Month
Highlights

NOVEMBER

Kim Accepts Role as Deputy Administrative Director

Nathaniel Kim, head of the Judiciary's Support Services Division, accepted the additional role as deputy administrative director of the courts effective November 1. In an innovative move, reflecting the Judiciary's recently-initiated Achieving Court Excellence (ACE) Project, Kim agreed to maintain his current position as well as perform the additional duties of the deputy director.

Initiated in 1999, the ACE Project recommended that the Judiciary reduce its senior management overhead. Mr. Kim's administrative assignment as deputy director will allow the Judiciary to assess the effectiveness of this model over time.

Mr. Kim has been with the Judiciary since 1976, beginning as a probation officer with the Adult Probation Division, First Circuit Court. He has since held several other positions, including chief court administrator of the First Circuit Court, before heading the Support Services Division.

O'ahu District Court Civil Case Information Available Via the Internet

Information on new District Court civil cases filed in the First Circuit after November 15, 2001, is now available through the Judiciary's Internet website at www.state.hi.us/jud.

Internet users may search for a District Court civil case by case number or by name of party, and find document information, such as document name, and filing date and time. In addition, users may obtain a list of court appearances, including date, time and description of appearance, minutes of the

hearing prepared by the court clerk, disposition (if any), and settlement conference report minutes (if any). When the conversion to the new system is completed, the data will be generally current to within 72 hours of the date of a filing of a court document or hearing.

Blair and Warrington Retire

On November 2, Russell Blair, a judge with the District Court of the First Circuit, retired from the Judiciary to return to school to study math and chemistry. Judge Diana Warrington retired on November 3 after six years as a First Circuit Family Court judge.

DECEMBER

22 State Judges Evaluated

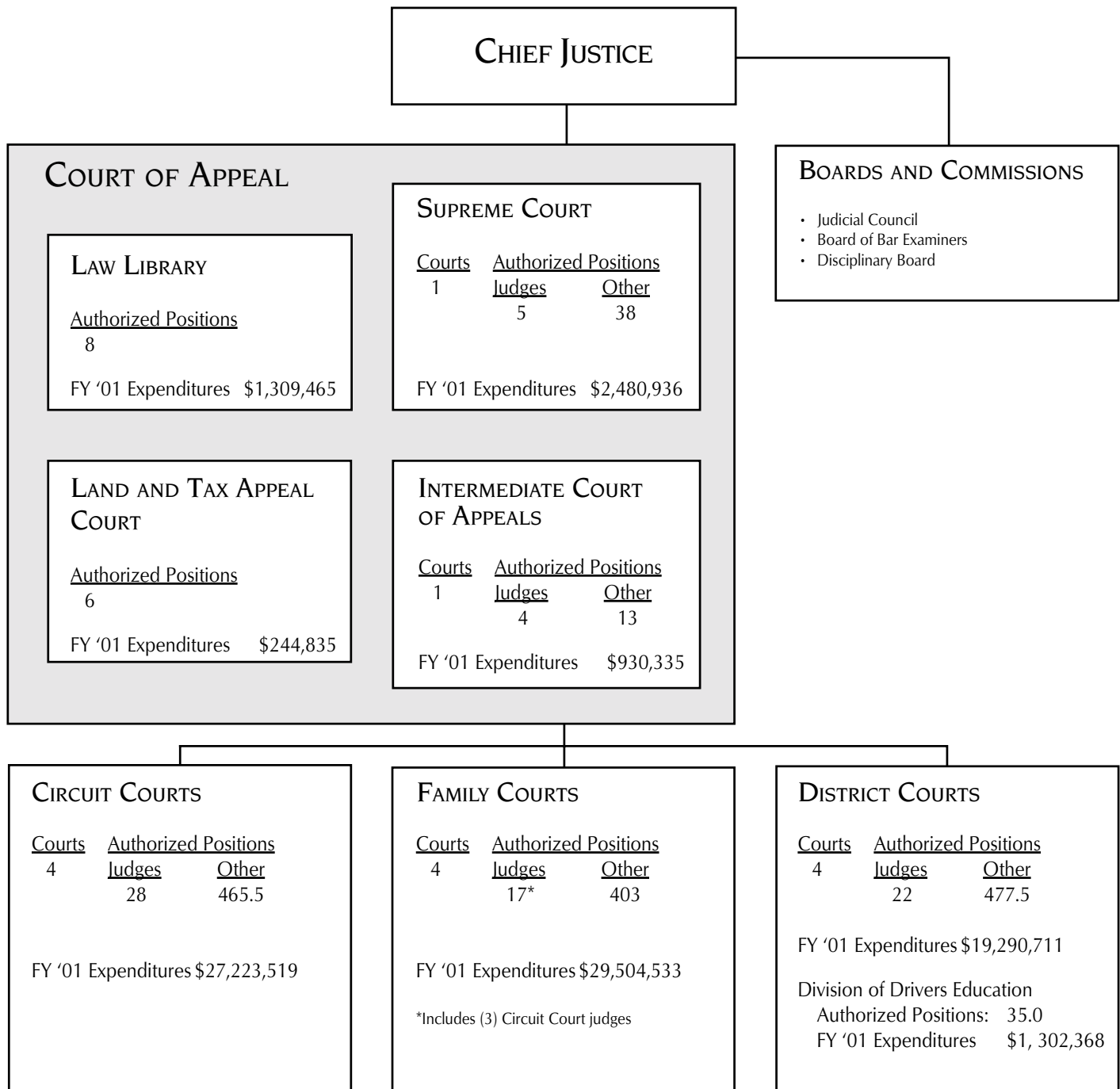
The seventh Judicial Performance Program report, which contains the summary performance evaluations results of 22 justices and judges, was released in December. Overall, the judges performed well in the areas evaluated.

For the first time, appellate justices and judges were evaluated. Six Supreme Court justices and Intermediate Court of Appeals judges were evaluated in January and February 2001. As in the past, the Judicial Evaluation Review Panel of nine members interviewed justices and judges evaluated in the report.

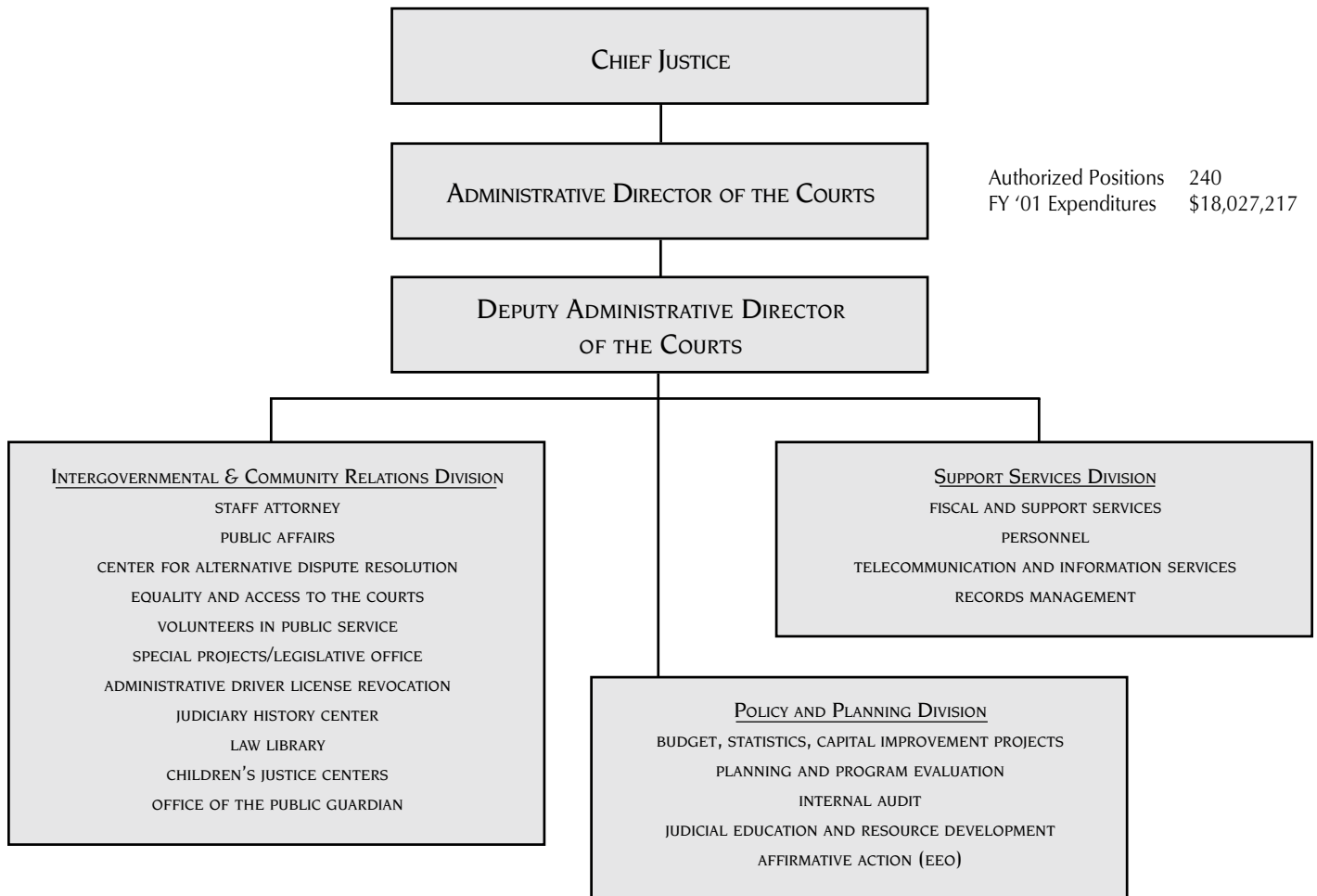
Judges Artemio Baxa and I. Norman Lewis Retire

Judge Artemio C. Baxa of the Circuit Court of the Second Circuit (Maui, Moloka'i, Lāna'i) and Judge I. Norman Lewis of the District Court of the First Circuit retired on December 28. Judge Baxa served with the Judiciary since May 1998. Judge Lewis was first appointed to the bench on August 1, 1980.

Structure of the Court System



Structure of the Office of the Administrative Director of the Courts



* Funding reflected under Courts of Appeal

New Judicial Appointments



Justice Steven S. Alm
May 14, 2001 -
May 31, 2011

JUDGE STEVEN S. ALM

Before being appointed to the Circuit Court of the First Circuit on May 14, 2001, Judge Steven S. Alm served as the U.S. Attorney for the District of Hawai‘i for nearly seven years. In 1998, he initiated the Weed and Seed Program that brought together law enforcement agencies at federal, state, and local levels. For his efforts in drug and crime reduction, he was given the 2001 Ola Pono Award and voted into the Hawai‘i Joint Police Association Hall of Fame. Judge Alm received his law degree from the McGeorge School of Law, University of the Pacific.



Judge Reinette W. Cooper
May 7, 2001 -
May 6, 2007

JUDGE REINETTE W. COOPER

Judge Reinette W. Cooper was appointed to the District Court of the Second Judicial Circuit on May 7, 2001. Prior to her appointment, she was a sole practitioner and a per diem Family Court judge on Maui. She previously was with the Law Office of Joy Yanagida and the Office of the Public Defender. Judge Cooper is a graduate of the Southwestern University School of Law.

*New Judicial
Appointments*

JUDGE TRUDY K. SENDA

Before her appointment to the District Court of the Fifth Judicial Circuit on May 4, 2001, Judge Trudy K. Senda was an associate with the Law Offices of Randal Valenciano since 1996. Previously, she was in private practice at various law firms on Kaua'i and O'ahu. Judge Senda received her law degree from the University of Hawaii's William S. Richardson School of Law.

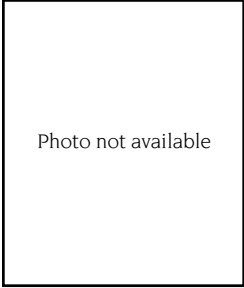


Photo not available

Judge Trudy K. Senda
May 4, 2001 -
May 3, 2007

Courts of Appeal

The Judiciary's appellate level is composed of the Supreme Court and the Intermediate Court of Appeals (ICA). The Courts of Appeal hear appeals from all trial courts and specific state boards and agencies.

Generally, cases assigned to the Supreme Court involve the formulation and development of the law, while cases assigned to the ICA involve possible trial court error or the application of settled law. An ICA decision may be reviewed by the Supreme Court upon request by any party, though the Supreme Court may exercise its discretion in accepting the matter.

Members of the Supreme Court and ICA are appointed to an initial ten-year term by the Governor. The Governor selects appointees from a list of not less than four and not more than six names submitted by the Judicial Selection Commission. All appointments must be confirmed by the State Senate.

To be considered for appointment, a person must be a resident and a citizen of the State and of the United States and licensed to practice law by the Supreme Court of Hawaii for not less than ten years preceding their nomination. Justices and judges may be retained by the Judicial Selection Commission, but must retire at age 70.

Courts of Appeal

ACTIONS FILED

There were 830 primary cases filed in the Courts of Appeal during the 2000-01 fiscal year – 766 appeals and 64 original proceedings.

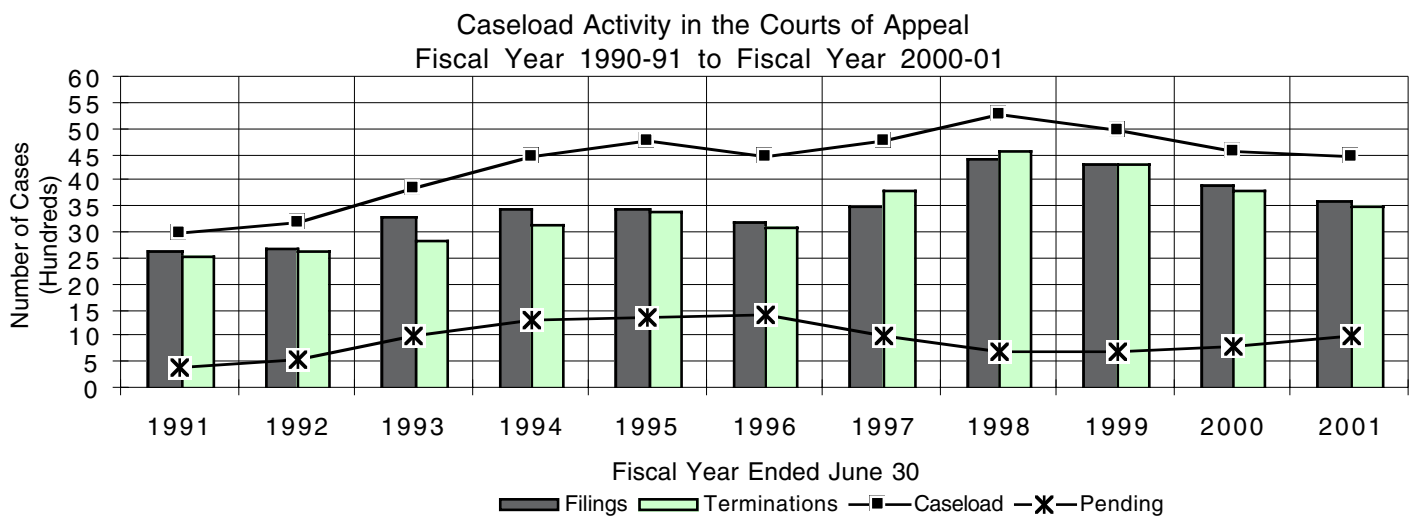
Supplemental proceedings, which arise out of primary cases, are comprised of motions, special stipulations, and applications for certiorari. In fiscal year 2000-01, 2,804 supplemental proceedings were filed in the Courts of Appeal.

STATUS OF PENDING CASES

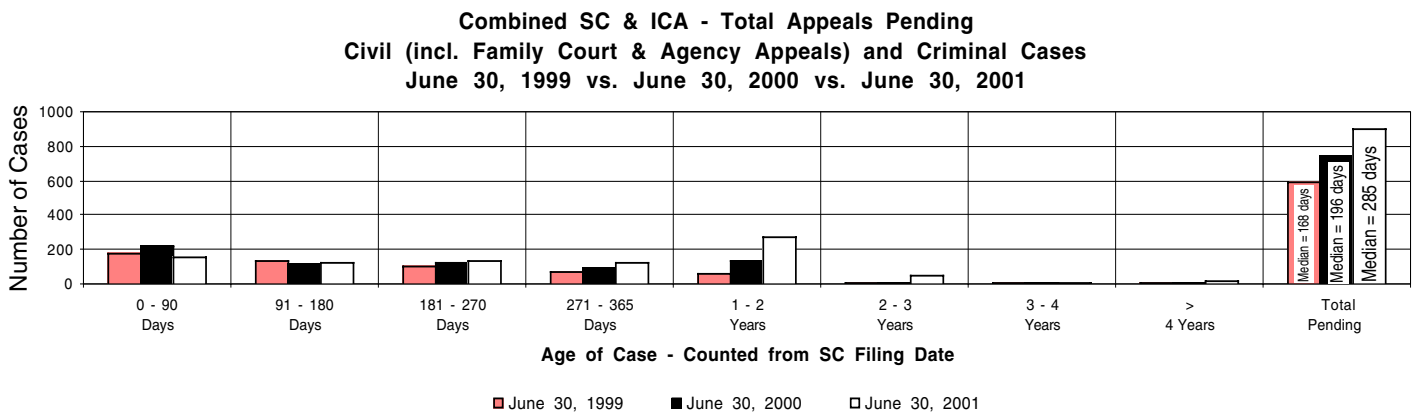
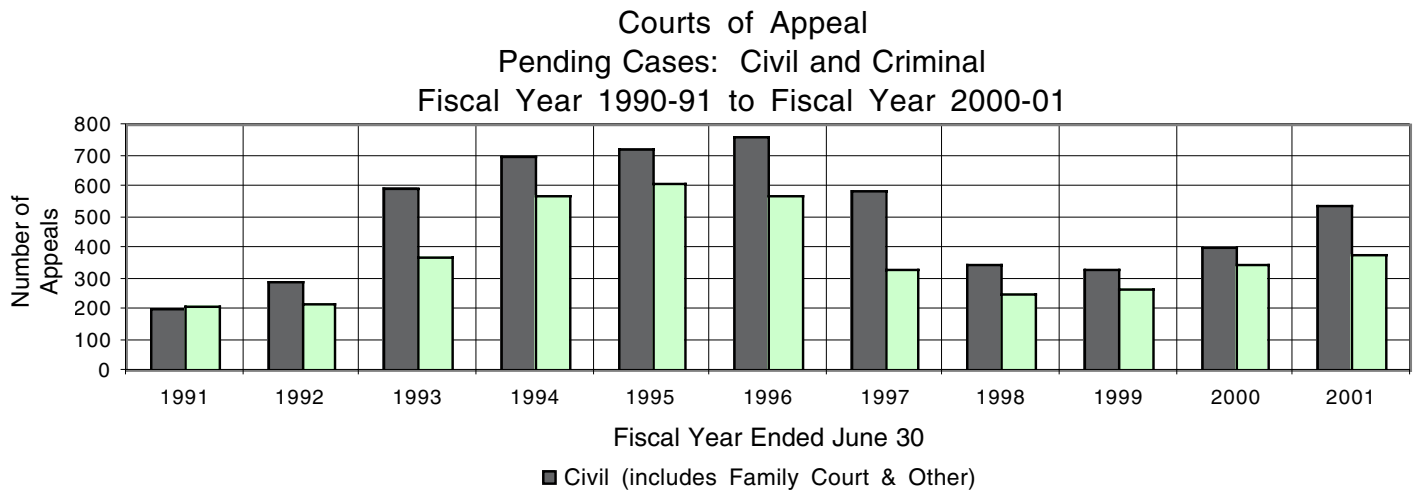
There were 925 primary cases and 79 supplemental proceedings pending in the Courts of Appeal at the end of the fiscal year. Of the 1004 pending cases, 68% were being briefed, 31% were ready to be scheduled for hearing or, in the case of supplemental proceedings, ready and awaiting decision without further hearing, and 4% had been taken under advisement and were awaiting decision.

TERMINATIONS

The Courts of Appeal terminated 662 primary cases during fiscal year 2000-01 compared to 738 primary cases terminated during the previous fiscal year. Terminations of supplemental proceedings decreased from 3,068 last year to 2,788 this year.



Courts of Appeal



Supreme Court

STRATEGIC MISSION

The mission of the Supreme Court is to: provide timely disposition of cases, including resolution of particular disputes and explication of applicable law; license and discipline attorneys; discipline judges; and make rules of procedure for all Hawai'i courts.

COURT DESCRIPTION

The Supreme Court is the State's highest court. Its decisions are binding on all other Hawai'i courts.

In Hawai'i, the primary mission of the Supreme Court is to review the decisions of the lower courts in which appeals have been allowed. Cases that are reviewed by appeal have been initiated in either a trial court or an agency. The Supreme Court has original jurisdiction in proceedings for extraordinary relief in the nature of mandamus, certiorari, and prohibition, and in habeas corpus proceedings.

Each appeal is decided on the basis of the written record. In some cases, the court may hear oral arguments. The court takes no evidence, except in original proceedings. All five justices hear each case.

The members of the Supreme Court are Chief Justice Ronald T.Y. Moon, and Associate Justices Steven H. Levinson, Paula A. Nakayama, Mario R. Ramil, and Simeon R. Acoba, Jr.

Members of the Supreme Court are appointed to an initial ten-year term by the Governor. The Governor selects appointees from a list of not less than four and not more than six names submitted by the Judicial Selection Commission. All appointments must be confirmed by the State Senate. To be considered for appointment, a person must be a resident and a citizen of the State and of the United States and licensed to practice law by the Supreme Court of Hawai'i for not less than ten years preceding their nomination. Justices may be retained by the Judicial Selection Commission, but must retire by age 70.

In addition to its appellate functions, the Supreme Court is also responsible for the formulation of court rules, the licensing and disciplining of attorneys, and the determination of judicial fitness.

Chief Justice Moon and the Supreme Court are assisted by committees of lawyers and non-lawyers and by staff. The Judicial Council, a citizen's group, provides advice about the administration of justice. The Board of Examiners examines the qualifications of those who wish to practice law in the State.

The Commission on Judicial Conduct reviews complaints against judges and recommends discipline to the Supreme Court. The Office of Disciplinary Counsel investigates complaints against lawyers and recommends appropriate discipline to the Supreme Court.

The Supreme Court Staff Attorney heads a staff of four attorneys who assist the Supreme Court in the processing of its work.

In Hawai'i, the Chief Justice is responsible for the administration of all courts in the State and appoints a director of the Administrative Office of the Courts to manage the non-judicial aspects of the Judiciary.

Supreme Court

ACTIONS FILED

During fiscal year 2000-01, 829 primary cases were filed in the Supreme Court. There were also 2,689 supplemental proceedings filed before the Supreme Court.

TERMINATIONS

Terminations of primary cases decreased from last fiscal year – 779 cases to 688. These included 223 cases which were assigned to the Intermediate Court of Appeals.

STATUS OF PENDING CASES

At the end of the fiscal year, 736 primary cases and 50 supplemental proceedings were pending. All pending supplemental proceedings were complete and awaiting decision.

JUSTICES AND THEIR TERMS

CHIEF JUSTICE RONALD T.Y. MOON
March 31, 1993 - March 30, 2003

ASSOCIATE JUSTICE STEVEN H. LEVINSON
April 7, 1992 - April 6, 2002

ASSOCIATE JUSTICE PAULA A. NAKAYAMA
April 22, 1993 - April 21, 2003

ASSOCIATE JUSTICE MARIO R. RAMIL
May 13, 1993 - May 12, 2003

ASSOCIATE JUSTICE SIMEON R. ACOBA, JR.
May 19, 2000 - May 18, 2010

*Intermediate
Court of
Appeals*

STRATEGIC MISSION

The mission of the Intermediate Court of Appeals is to provide timely disposition of appeals from trial courts and state agencies, including the resolution of the particular dispute and explication of the law for the benefit of the litigants, the bar, and the public.

COURT DESCRIPTION

The second highest court in the State, the Intermediate Court of Appeals (ICA) shares concurrent jurisdiction with the Supreme Court in reviewing legal matters brought before the Courts of Appeal. The ICA's cases are assigned by the Supreme Court. Usually, the ICA reviews trial court decisions for errors while the Supreme Court reviews matters involving the formulation of the law. The ICA has the authority to reverse, remand, modify, or affirm decisions in all trial courts. Its decisions are subject to review by the Supreme Court.

The ICA is comprised of four judges, who sit in panels of three.

Intermediate Court of Appeals

ACTIONS FILED

A total of 225 primary cases and 115 supplemental proceedings were assigned to the Intermediate Court of Appeals in fiscal year 2000-01. Primary cases are assigned to the Intermediate Court of Appeals from the Supreme Court while supplemental proceedings may be filed directly with the Intermediate Court of Appeals or transferred from the Supreme Court.

TERMINATIONS

During fiscal year 2000-01, the Intermediate Court of Appeals terminated 58% of its total caseload. This figure includes 198 primary cases and 108 supplemental proceedings.

STATUS OF PENDING CASES

One hundred eighty-nine cases and 29 supplemental proceedings were pending at the end of the 2000-01 fiscal year, 42% of the total caseload for the year.

JUDGES AND THEIR TERMS

CHIEF JUDGE JAMES S. BURNS
May 14, 1992 - May 13, 2002

ASSOCIATE JUDGE CORINNE K. A. WATANABE
May 11, 1992 - May 10, 2002

ASSOCIATE JUDGE JOHN S.W. LIM
June 1, 1999 - May 31, 2009

ASSOCIATE JUDGE DANIEL R. FOLEY
October 2, 2000 - October 1, 2010

Land Court

DESCRIPTION

The Land Court is a statewide court of record which has exclusive jurisdiction of all applications for the registration of title to land and easements or rights in land held and possessed in fee simple within the state. It has the power to hear and determine all questions arising upon applications as they come before it under chapter 501 of the Hawai'i Revised Statutes, subject to the rights of appeal.

ACTIONS FILED

In fiscal year 2000-01, 18 contested cases were filed in the Land Court. Combined with the 107 cases pending at the end of the last fiscal year, the Land Court handled a total caseload of 125 cases.

Filings of ex parte petitions, which are one-party petitions not requiring court action, totaled 3,377 in fiscal year 2000-01.

TERMINATIONS AND PENDING CASES

Eleven contested cases were terminated during fiscal year 2000-01 leaving 114 cases pending at the start of the new fiscal year.

Tax Appeal Court

DESCRIPTION

The Tax Appeal Court is a statewide court with jurisdiction over disputes concerning property, excise, liquor, income and insurance taxes.

The Tax Appeal Court is located in Honolulu and convenes in the other circuits (Hawai'i, Maui and Kaua'i) at least once each year to hear disputes involving real property taxes.

ACTIONS FILED

In fiscal year 2000-01, 372 cases were filed in the Tax Appeal Court. Combined with the 384 pending cases at the end of the last fiscal year, the Tax Appeal Court's total caseload was 756 cases.

TERMINATIONS AND PENDING CASES

The Tax Appeal Court terminated a total of 53 cases or 7% of the Court's caseload during the 2000-01 fiscal year. Seven hundred three cases remained pending at the close of the fiscal year.

Trial Courts

Hawaii's trial level is comprised of Circuit Courts and District Courts. Family Courts are included in the Circuit Courts. Hawaii's trial courts function in four judicial circuits that correspond approximately to the geographical areas served by the counties.

The First Judicial Circuit serves the City and County of Honolulu.

The Second Judicial Circuit serves the County of Maui, which includes the islands of Maui, Moloka'i (including the settlement of Kalawao), and Lāna'i.

The Third Judicial Circuit, divided into the districts of Hilo and Kona, administers the County of Hawai'i.

The Fourth Judicial Circuit is no longer used as a circuit designation. The Third and Fourth Circuits merged in 1943.

The Fifth Judicial Circuit serves the County of Kaua'i, which includes the islands of Kaua'i and Ni'ihau.

Circuit Courts

STRATEGIC MISSION

The mission of the Circuit Court is to expeditiously and fairly adjudicate or resolve all matters within its jurisdiction in accordance with law.

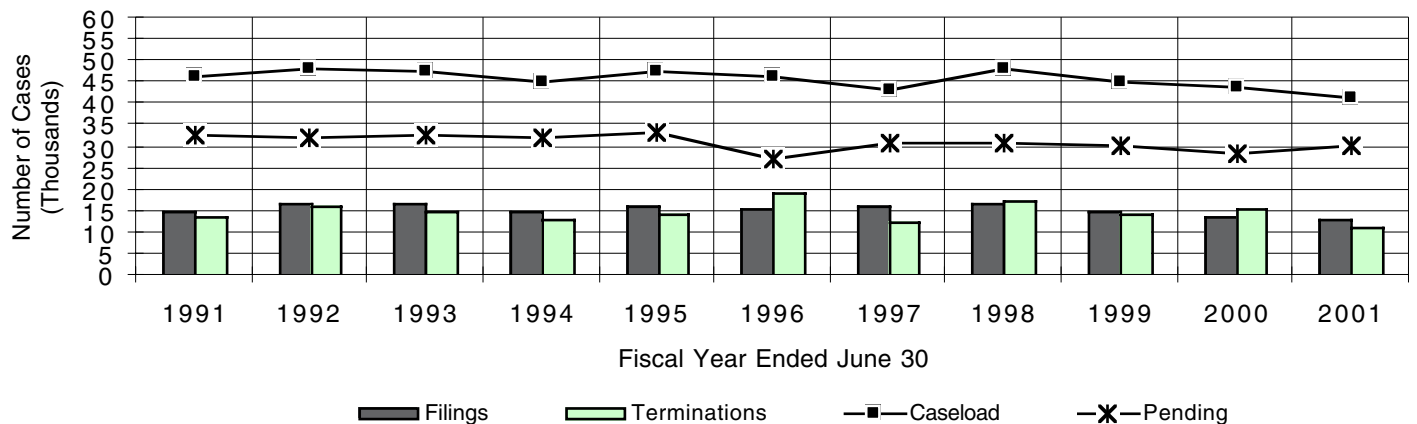
DESCRIPTION

All jury trials are held in the Circuit Courts, which have general jurisdiction in civil and criminal cases. They also have exclusive jurisdiction in probate, guardianship and criminal felony cases, as well as civil cases where the contested amount exceeds \$20,000.

Circuit Courts share concurrent jurisdiction with District Courts in civil non-jury cases that specify amounts between \$10,000-\$20,000. Additional cases dispensed by the Circuit Courts include mechanics' lien, and misdemeanor violations transferred from the District Courts for jury trials.

Circuit Court judges are appointed to ten-year terms by the Governor from a list of not less than four and not more than six nominees provided by the Judicial Selection Commission. The nominees are subject to confirmation by the State Senate.

Caseload Activity in the Circuit Courts Proper
(Excludes Supplemental Proceedings)
Fiscal Year 1990-91 to Fiscal Year 2000-01



Circuit Courts

ACTIONS FILED

Filings in the Circuit Courts Proper totaled 13,070 cases in fiscal year 2000-01. Of the cases filed, 5,497 or 42%, were civil cases, and 4,706, or 36%, were criminal cases.

TERMINATIONS

During fiscal year 2000-01, the Circuit Courts terminated 11,310 cases.

STATUS OF PENDING CASES

At the end of the 2000-01 fiscal year, a total of 36,085 cases were pending in the Circuit Courts Proper.

ADULT PROBATION DIVISIONS

Statewide reporting of Adult Probation activity showed that there were 3,129 investigations completed during fiscal year 2000-01. In supervision cases, where persons were placed on probation or subject to court-ordered control, including offenders released from the Hawai'i State Hospital, there were 1,970 new placements added to the 10,715 cases pending from the previous fiscal year. Of these, 1,569 cases were closed, leaving 10,576 open at the end of the 2000-01 fiscal year.

*Judges and
their Terms*

*Circuit Court
Judges*

FIRST JUDICIAL CIRCUIT

KARL K. SAKAMOTO, 1ST DIVISION
June 1, 2000 - May 31, 2010

STEVEN S. ALM, 2ND DIVISION
May 14, 2001 - May 13, 2011

VICTORIA S. MARKS, 3RD DIVISION
May 26, 1994 - May 25, 2004

GAIL C. NAKATANI, 4TH DIVISION
DEPUTY CHIEF JUDGE/ADMINISTRATIVE JUDGE -
CRIMINAL DIVISION
May 11, 1992 - May 10, 2002

EDEN ELIZABETH HIFO, 5TH DIVISION
April 30, 1993 - April 29, 2003

MICHAEL D. WILSON, 6TH DIVISION
May 10, 2000 - May 9, 2010

RICHARD W. POLLACK, 7TH DIVISION
May 10, 2000 - May 9, 2010

RICHARD K. PERKINS, 8TH DIVISION
May 6, 1994 - May 5, 2004

VIRGINIA L. CRANDALL, 9TH DIVISION
April 1, 2001 - March 31, 2011

WILFRED K. WATANABE, 10TH DIVISION
April 30, 1995 - April 29, 2005

KAREN S. S. AHN, 11TH DIVISION
May 10, 2000 - May 9, 2010

SANDRA ARLENE SIMMS, 12TH DIVISION
May 26, 1994 - May 25, 2004

DEXTER DEL ROSARIO, 13TH DIVISION
April 15, 1994 - April 14, 2004

GARY W. B. CHANG, 14TH DIVISION
June 1, 1999 - May 31, 2009

KAREN N. BLONDIN, 15TH DIVISION
DEPUTY CHIEF JUDGE/ADMINISTRATIVE JUDGE -
CIVIL DIVISION
May 11, 1992 - May 10, 2002

MARIE N. MILKS, 16TH DIVISION
March 16, 1994 - March 15, 2004

REYNALDO D. GRAULTY, 17TH DIVISION
March 5, 1999 - March 4, 2009

FRANCES Q. F. WONG, 18TH DIVISION
DEPUTY CHIEF JUDGE/SENIOR JUDGE,
FAMILY COURT
May 11, 1992 - May 10, 2002

MICHAEL A. TOWN, 19TH DIVISION
April 30, 1993 - April 29, 2003

COLLEEN K. HIRAI, 20TH DIVISION
CHIEF JUDGE
May 6, 1994 - May 5, 2004

DAN T. KOCHI, 21ST DIVISION
April 15, 1994 - April 14, 2004

SABRINA S. MCKENNA, 22ND DIVISION
June 30, 1995 - June 29, 2005

DERRICK H. M. CHAN, 23RD DIVISION
August 25, 2000 - August 24, 2010

*Judges and
their Terms*

*Circuit Court
Judges*

SECOND JUDICIAL CIRCUIT

SHACKLEY F. RAFFETTO, 1ST DIVISION
CHIEF JUDGE/ADMINISTRATIVE JUDGE/
SENIOR JUDGE, FAMILY COURT
June 9, 1994 - June 8, 2004

ARTEMIO C. BAXA, 2ND DIVISION
Retired December 28, 2001

JOSEPH E. CARDOZA, 3RD DIVISION
June 24, 1999 - June 23, 2009

THIRD JUDICIAL CIRCUIT

GREG K. NAKAMURA, 1ST DIVISION
DEPUTY CHIEF JUDGE/SENIOR JUDGE,
FAMILY COURT
April 18, 1994 - April 17, 2004

RIKI MAY AMANO, 2ND DIVISION
April 12, 1993 - April 11, 2003

RONALD IBARRA, 3RD DIVISION
CHIEF JUDGE/ADMINISTRATIVE JUDGE
May 10, 1999 - May 9, 2009

FIFTH JUDICIAL CIRCUIT

GEORGE M. MASUOKA, 1ST DIVISION
CHIEF JUDGE/ADMINISTRATIVE JUDGE/
SENIOR JUDGE, FAMILY COURT
July 8, 1998 - July 7, 2008

CLIFFORD L. NAKEA, 2ND DIVISION
September 22, 2000 - September 21, 2010

Family Courts

STRATEGIC MISSION

The mission of the Family Court is to provide a fair, speedy, economical and accessible forum for the resolution of matters involving families and children.

DESCRIPTION

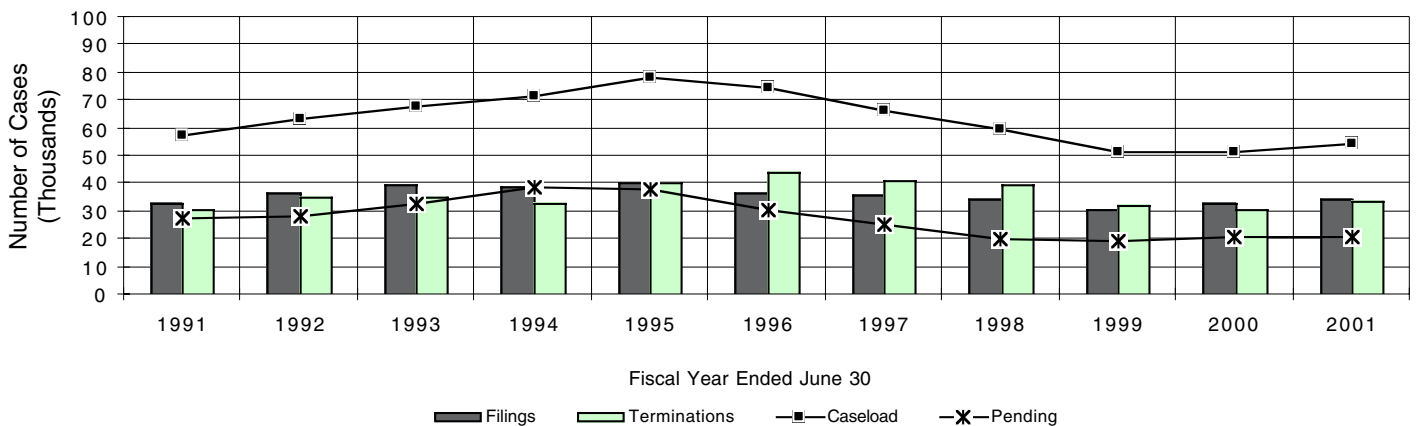
The Family Courts were established by statute in 1965 to deal with virtually all legal problems impinging on Hawaii's families and children.

The Family Court hears all legal matters involving children, such as delinquency, waiver, status offenses, abuse and neglect, termination of parental rights, adoption, guardianships, and detention. The Family

Court also hears traditional domestic relations cases, including divorce, nonsupport, paternity, uniform child custody jurisdiction cases, and miscellaneous custody matters.

District Family Court judges are appointed to six-year terms by the Chief Justice from a list of at least six names submitted for each opening by the Judicial Selection Commission, subject to confirmation by the State Senate.

Caseload Activity in the Family Courts
(Excludes Adults' Referrals and Supplemental Proceedings)
Fiscal Year 1990-91 to Fiscal Year 2000-01



*Family
Courts*

ACTIONS FILED

A total of 34,181 cases were filed in the Family Courts in fiscal year 2000-01.

TERMINATIONS

Terminations totaled 33,492 in fiscal year 2000-01.

STATUS OF PENDING CASES

At the end of fiscal year 2000-01, there were 20,855 cases pending.

*Judges and
their Terms*

FIRST JUDICIAL CIRCUIT

FRANCES Q. F. WONG, FIRST CIRCUIT COURT,
18TH DIVISION
DEPUTY CHIEF JUDGE/SENIOR JUDGE,
FAMILY COURT
May 11, 1992 - May 10, 2002

STEVEN S. ALM, FIRST CIRCUIT COURT,
2ND DIVISION
May 14, 2001 - May 13, 2011

MICHAEL D. WILSON, FIRST CIRCUIT COURT,
6TH DIVISION
May 10, 2000 - May 9, 2010

R. MARK BROWNING
June 6, 1997- June 5, 2003

JOHN C. BRYANT, JR.
October 22, 1999 - October 21, 2005

DARRYL . C. CHOY
January 4, 2000 - January 3, 2006

KENNETH E. ENRIGHT
February 28, 1997 - February 27, 2003

LINDA K. C. LUKE
December 29, 1998 - December 28, 2004

KAREN M. RADIUS
December 9, 2000 - December 8, 2006

ALLENE K. R. SUEMORI
March 31, 1999 - March 30, 2005

BODE AMILALE UALE
October 27, 1998 - October 26, 2004

DIANA L. WARRINGTON
Retired November 3, 2001

SECOND JUDICIAL CIRCUIT

SHACKLEY F. RAFFETTO, SECOND CIRCUIT COURT
1ST DIVISION
CHIEF JUDGE/ADMINISTRATIVE JUDGE/
SENIOR JUDGE, FAMILY COURT
June 9, 1994 - June 8, 2004

GERONIMO VALDRIZ, JR.
May 26, 2000 - May 25, 2006

ERIC G. ROMANCHAK
October 29, 2000 - October 28, 2006

THIRD JUDICIAL CIRCUIT

GREG K. NAKAMURA, THIRD CIRCUIT COURT
1ST DIVISION
DEPUTY CHIEF JUDGE/
SENIOR JUDGE, FAMILY COURT
April 18, 1994 - April 17, 2004

BEN H. GADDIS
May 17, 2001 - May 16, 2007

ALEY K. AUNA, JR.
April 4, 2000 - April 3, 2006

TERRENCE T. YOSHIOKA
April 28, 2000 - April 27, 2006

FIFTH JUDICIAL CIRCUIT

GEORGE M. MASUOKA, FIFTH CIRCUIT COURT
1ST DIVISION
CHIEF JUDGE/ADMINISTRATIVE JUDGE
SENIOR JUDGE, FAMILY COURT
July 8, 1998 - July 7, 2008

CALVIN K. MURASHIGE
June 25, 1999 - June 24, 2005

*Family Court
Judges*

District Courts

STRATEGIC MISSION

The mission of the District Court is to serve the people of Hawai'i through the fair and efficient adjudication and resolution of cases and controversies brought before it.

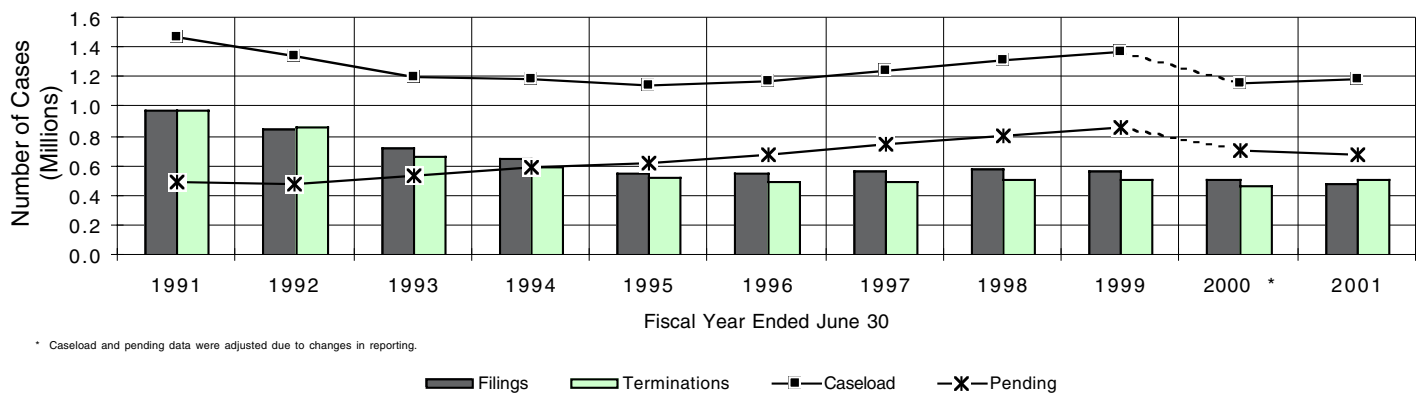
DESCRIPTION

The District Courts have exclusive jurisdiction over traffic infractions, summary possession or ejection proceedings (landlord-tenant), regardless of the amount of the claim, and non-jury trial civil cases where the relief sought is under \$10,000. The District Courts also have jurisdiction over civil cases where the debt, amount, damages, or value of the property claimed does not exceed

\$20,000, or where the remedy sought is specific performance valued under \$20,000, criminal offenses punishable by fine or by imprisonment not exceeding one year, cases arising from violations of a county ordinance, and petitions for restraining orders for relief from and for injunctions against harassment. There are no jury trials in the District Courts, except in driving under the influence of intoxicating liquor cases.

District Court judges are appointed to six-year terms by the Chief Justice from a list of at least six names submitted for each opening by the Judicial Selection Commission, subject to confirmation by the State Senate.

Caseload Activity in the District Courts
Fiscal Year 1990-91 to Fiscal Year 2000-01



*District
Courts*

ACTIONS FILED

During the 2000-01 fiscal year, 485,889 cases were filed in the District Courts. Traffic violation cases constituted the bulk of the filings, accounting for 84% of all case filings. Civil actions represented approximately 4% of filings, criminal actions 11%, and other violations 1%.

TERMINATIONS

A total of 503,296 cases were terminated in the District Courts during the fiscal year.

PENDING CASES

There were 685,605 cases pending at the end of fiscal year 2000-01.

Judges and their Terms

District Court Judges

FIRST JUDICIAL CIRCUIT

MARCIA J. WALDORF, 1ST DISTRICT
January 3, 1997 - January 2, 2003

TENNEY Z. TONGG, 2ND DISTRICT
September 18, 1996 - September 17, 2002

FA'AUUGA TO'OTO'O, 3RD DISTRICT
December 9, 2000 - December 8, 2006

RUSSEL S. NAGATA, 4TH DISTRICT
October 5, 1998 - October 4, 2004

RHONDA A. NISHIMURA, 5TH DISTRICT
June 6, 1997 - June 5, 2003

DAVID L. FONG, 6TH DISTRICT
November 4, 1996 - November 3, 2002

I. NORMAN LEWIS, 7TH DISTRICT
Retired, December 28, 2001

RUSSELL BLAIR, II, 8TH DISTRICT
Retired November 2, 2001

BARBARA P. RICHARDSON, 9TH DISTRICT
May 5, 2000 - May 4, 2006

GEORGE Y. KIMURA, 10TH DISTRICT
May 22, 1998 - May 21, 2004

LESLIE A. HAYASHI, 11TH DISTRICT
November 5, 1996 - November 4, 2002

DAVID W. LO, 12TH DISTRICT
August 23, 2000 - August 22, 2006

GERALD H. KIBE, 13TH DISTRICT
January 6, 2001 - January 5, 2007

COLETTE Y. GARIBALDI, 14TH DISTRICT
DEPUTY CHIEF JUDGE/ADMINISTRATIVE JUDGE
February 28, 1997 - February 27, 2003

SECOND JUDICIAL CIRCUIT

RHONDA I. L. LOO, 1ST DISTRICT
May 1, 1997 - April 30, 2003

DOUGLAS H. IGE, 2ND DISTRICT
DEPUTY CHIEF JUDGE/ADMINISTRATIVE JUDGE
June 28, 1996 - June 27, 2002

REINETTE W. COOPER, 3RD DISTRICT
May 7, 2001 - May 6, 2007

THIRD JUDICIAL CIRCUIT

JEFFREY CHOI, 1ST DISTRICT
DEPUTY CHIEF JUDGE/ADMINISTRATIVE JUDGE
September 1, 1999 - August 31, 2005

JOSEPH P. FLORENDO, JR., 2ND DISTRICT
November 3, 1998 - November 2, 2004

SANDRA E. P. SCHUTTE, 3RD DISTRICT
June 2, 1997 - June 1, 2003

FIFTH JUDICIAL CIRCUIT

CALVIN K. MURASHIGE
DEPUTY CHIEF JUDGE/ADMINISTRATIVE JUDGE
June 25, 1999 - June 24, 2005

TRUDY K. SENDA
May 4, 2001 - May 3, 2007

Per Diem Judges

FIRST JUDICIAL CIRCUIT

James R. Aiona, Jr.
John Campbell, Jr.
Marilyn Carlsmith
Gale L.F. Ching
Lawrence R. Cohen
James H. Dannenberg
Paula Devens-Matayoshi
Philip Doi
Peter V.N. Esser
Peter C.K. Fong
Hilary Benson Gangnes
Christine E. Kuriyama
Lenore K.J.H. Lee
Lono J. Lee
Wilson M.N. Loo
Michael A. Marr
Christopher P. McKenzie
Patricia Ann McManaman
Paul T. Murakami
William J. Nagle III
W. Patrick O'Connor
Clarence A. Pacarro
Lillian Ramirez-Uy
Nancy Ryan
Yvonne R. Shinmura
Timothy David Woo, Jr.
Vernon Y.T. Woo
Gregg Young

SECOND JUDICIAL CIRCUIT

Jan K. Apo
Ruby A. Hamili
Paul L. Horikawa
Mary Blaine Johnston
Barclay E. MacDonald
Jack R. Naiditch
Anthony L. Ranken
Douglas J. Sameshima
John T. Vail

THIRD JUDICIAL CIRCUIT

Karen Napua Brown
William S. Chillingworth
Victor M. Cox
Colin L. Love
Matthew S.K. Pyun, Jr.
Shawn Maile Nakoia
John P. Moran
Elizabeth Ann Strance
Barbara T. Takase
George S. Yuda

FIFTH JUDICIAL CIRCUIT

Max W.J. Graham, Jr.
Walton D.Y. Hong
Joseph N. Kobayashi
Gerald S. Matsunaga
Frank D. Rothschild

Support Services

STRATEGIC MISSION

The mission of the Office of the Administrative Director of the Courts is to promote the administration of justice in Hawai'i by providing professional, responsive administrative support to the Chief Justice, the courts and Judiciary programs and to expedite, facilitate and enhance the mission of the Judiciary.

ADMINISTRATION

The Office of the Administrative Director of the Courts has the primary responsibility for the daily operations of the court system. The Administrative Director is appointed by the Chief Justice with the approval of the Supreme Court, and is assisted by the Deputy Administrative Director.

The Administrative Director also has the responsibility of coordinating the Judiciary's annual presentations to the Legislature, both for the Judiciary budget and for changes in laws relating to the operation of the judicial system.

Administrative programs are divided into three divisions: the Intergovernmental and Community Relations Division, the Support Services Division, and the Policy and Planning Division. Programs that fall under the three divisions include: Affirmative Action/EEO, Budget and Statistics, Fiscal and Support Services, Equality and Access to the Courts, Internal Audit, Judicial Education and Resource Development, Personnel, Planning and Evaluation, Public Affairs, Staff Attorneys, Telecommunication and Information Services, and Volunteers in Public Service to the Courts. Other program components which carry statewide operational responsibilities are the Administrative Driver License Revocation Office, Center for Alternative Dispute Resolution, Children's Justice Centers, Judicial Conduct Commission, Judicial Selection Commission, Judiciary History Center, Law Library, Office of the Public Guardian, Records Management, and Special Projects/Legislative Office.

Financial Resources

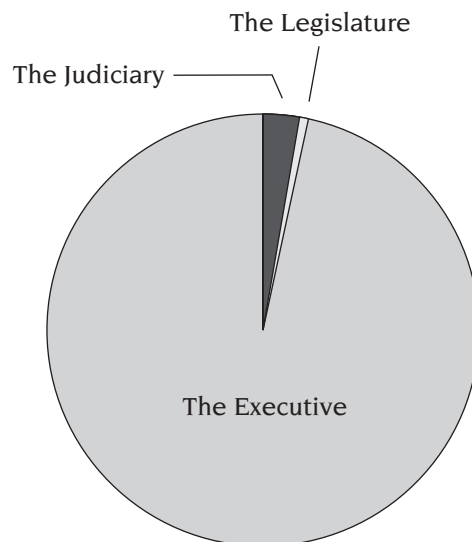
Appropriations for the Hawai‘i State Judiciary are made by the Legislature on a statewide basis, with each fiscal year beginning July 1 and ending June 30. Both the operating and capital improvements budgets of the Judiciary are legislatively determined each biennium with operating monies allocated from the State General and Special Funds and capital improvement monies from the State Capital Project Fund.

Combined, the State General and the Capital Project Funds represent over 96 percent of the funding source of all Judiciary expenditures. The Legislature appropriated \$97,643,192 from the State General Fund for operations during the current fiscal year, and \$37,890,000 to the Judiciary from the State Capital Project Fund. Other operating monies come from federal funds, trust funds, and special revenue funds such as the Driver Education and Training Fund.

Financial Resources

THE JUDICIARY OPERATING FUNDS FISCAL YEARS 2001-2003 BUDGET SUMMARY*			
<u>PROGRAM</u>	<u>FY 2001 Actual Expenditures</u>	<u>FY 2002 Appropriations</u>	<u>Supplemental Budget Request FY 2003</u>
JUD 101 - COURTS OF APPEAL			
General Fund	4,670,416	4,755,306	5,020,996
Revolving Fund	50,320	75,000	243,261
JUD 310 - FIRST JUDICIAL CIRCUIT			
General Fund	49,905,556	51,067,262	51,596,806
Special Fund	1,681,904	3,300,852	2,944,366
JUD 320 - SECOND JUDICIAL CIRCUIT			
General Fund	10,131,660	10,334,614	10,742,388
JUD 330 - THIRD JUDICIAL CIRCUIT			
General Fund	12,278,455	12,096,168	12,865,655
JUD 350 - FIFTH JUDICIAL CIRCUIT			
General Fund	3,568,391	4,304,485	4,379,870
JUD 610 - ADMIN DIR SVCS			
General Fund	17,088,714	16,945,802	17,637,970
Special Fund	938,503	3,975,388	1,746,738
TOTALS			
General Fund	97,643,192	99,503,637	102,243,685
Special Fund	2,620,407	7,276,240	4,691,104
Revolving Fund	50,320	75,000	243,261

*The Supplemental Budget submission represents a significant change from the Judiciary's traditional budget structure. Specifically, in this transition year, we begin the move away from court program identifiers (Statewide Circuit, Family, and District Court groupings), to Judicial Circuit identifiers (First, Second, Third, and Fifth Circuits). During this transitional period, however, we will retain the ability to cross-reference resources under either the prior program or current circuit identifiers.



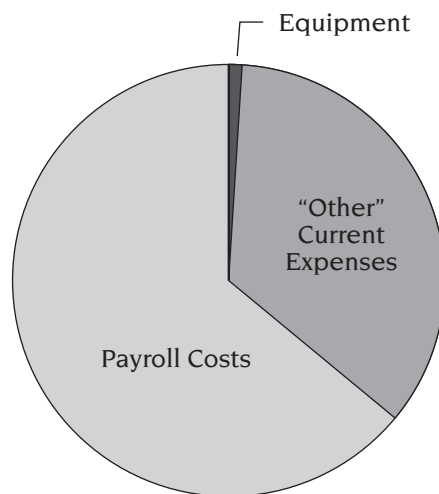
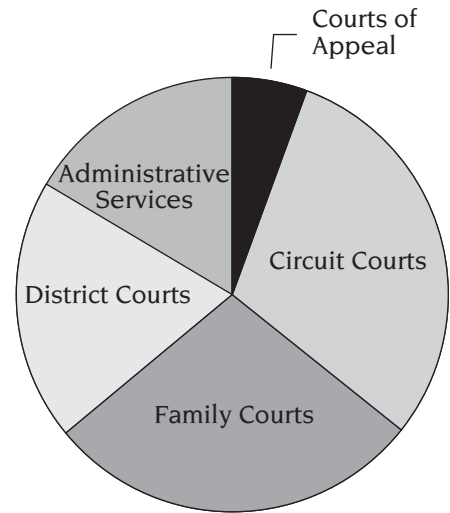
TOTAL STATE GOVERNMENT APPROPRIATIONS
FROM STATE GENERAL FUND
FISCAL YEAR 2000-01

The Judiciary	2.84%	\$ 97,643,192
The Legislature	.69%	23,667,186
The Executive	96.47%	3,311,154,729
<hr/>		
Total		\$ 3,432,465,107

Financial Resources

STATE GENERAL FUND EXPENDITURES
BY COURT ELEMENT
FISCAL YEAR 2000-01

Courts of Appeal	5.0%	\$ 4.9 million
Circuit Courts	27.9%	27.2 million
Family Courts	29.8%	29.1 million
District Courts	19.8%	19.3 million
Administrative Services	17.5%	17.1 million
<hr/>		
Total		\$ 97.6 million



STATE GENERAL FUND EXPENDITURES
BY COST CATEGORY
FISCAL YEAR 2000-01

Equipment	1%	\$ 1.2 million
"Other" Current Expenses	33%	31.9 million
Payroll Costs	66%	64.5 million
<hr/>		
Total		\$ 97.6 million

List of Available Judiciary Publications

THE FOLLOWING PUBLICATIONS ARE AVAILABLE
THROUGH:

The Judiciary Public Affairs Office
Ali'iōlani Hale
417 South King Street
Room 206-C
Honolulu, Hawai'i 96813

Internet site: www.state.hi.us/jud

PUBLICATIONS

Being 18 - Local Style
Children and Divorce
Children's Advocacy Center of O'ahu
Commission on Judicial Conduct
Court Orientation Tours
Disciplinary Complaints Against Lawyers
Going to Small Claims Court? What Do You Know
 About Mediation?
Going to Probate Court? What Do You Know
 About Mediation?
Judiciary History Center
Lawline
Probate Court Mediation
Restitution Mediation
Selecting a Mediator
Small Claims Mediation
Speakers Bureau Program
Standards for Public and Private Mediation
The Judiciary State of Hawai'i 2001 Annual Report
The Judiciary State of Hawai'i 2001 Statistical
 Supplement
The Judiciary Welcomes Volunteers
Your Guide to Small Claims Court
Your Guide to Regular Claims Court

VIDEOS

*An Informational Video on Deferred Acceptance of Guilty
(DAG)/Deferred Acceptance of No Contest (DANC) Plea
(TRT 18:00)*
Broken Scales: Justice Under Influence (TRT 18:17)
Informational Video on Small Claims (TRT 16:18)
Informational Video on Traffic Violations (TRT 15:15)
Jury Orientation Video (TRT 18:25)
Mediation: An Alternative to Court (TRT: 18:00)
The Purple Family: Divorce Education Video (TRT 23:52)