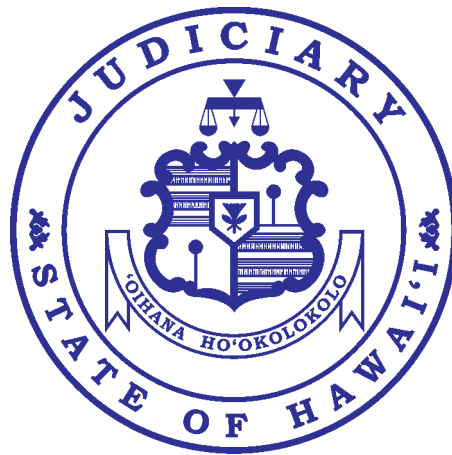


---

# The Judiciary State of Hawai'i



2002 Annual Report

---



*The mission of the Judiciary,  
as an independent branch of  
government, is to administer  
justice in an impartial, efficient,  
and accessible manner in  
accordance with the law.*

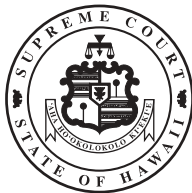
I am pleased to present our 2002 Annual Report that details the work of the Judiciary during the past year. As an independent branch of government, the Judiciary's role is to administer justice in an impartial manner, free from outside influences.

This report reflects the dedication of the men and women who work in the court system. Each day, these employees strive to do their best to fulfill our mission, all the while knowing that what they do could likely have far-reaching effects on people's lives. I am proud of the work of our employees and extend my heartfelt thanks and appreciation to them. I also thank another valuable part of our Judiciary family—the many volunteers who unselfishly give of their time and talent to serve the people of Hawai'i.

On behalf of the Judiciary, I extend our sincere appreciation to the Legislature for its continued support of our budgetary needs and legislative initiatives. I also extend warmest *aloha* to Governor Lingle, her cabinet, and members of the Legislature. We pledge our continuing commitment to working with you to build a dynamic and progressive judicial system. Our mutual quest for excellence depends on our cooperative and collaborative efforts.



Ronald T. Y. Moon  
Chief Justice  
Hawai'i Supreme Court





# *Table of Contents*

MONTH-BY-MONTH HIGHLIGHTS	1
STRUCTURE OF THE JUDICIARY	
Court System	7
Administrative System	8
NEW JUDICIAL APPOINTMENTS	9
COURTS OF APPEAL	11
Supreme Court	14
Intermediate Court of Appeals	16
Land Court	18
Tax Appeal Court	18
TRIAL COURTS	19
Circuit Courts	20
Family Courts	24
District Courts	28
Per Diem Judges	30
SUPPORT SERVICES	31
FINANCIAL RESOURCES	32

# Month-By-Month Highlights

## **JANUARY**

### *Scope of Drivers License Revocation Office Expands*

Effective January 1, 2002, the scope of the cases processed by the Administrative Drivers License Revocation Office expands to include revocation proceedings resulting from arrests for driving under the influence of drugs and boating under the influence of intoxicating liquor or drugs.

Part III, Act 189, Session Laws of Hawaii'i 2000, consolidated all existing provisions relating to driving under the influence of intoxicating liquor or drugs and boating under the influence of intoxicating liquor into a new chapter codified as HRS Chapter 291E. Chapter 291E provides for both administrative license revocation proceedings and penal sanctions for a single offense relating to operating a vehicle while under the influence of an intoxicant.

## **FEBRUARY**

### *Adult Probation Offers More Services to Victims*

Thanks to federal funds received through the Victims of Crime Act, First Circuit Court has a victim services coordinator to answer victims' questions or concerns about offenders who have gone to court and are pending sentencing or have already been sentenced to probation. The coordinator helps victims complete victim impact statements and answers questions regarding requests for restitution or restitution payments owed by defendants on probation. The coordinator also provides services to persons receiving help from Victim Witness Kokua Services, a program of the Prosecuting Attorney's Office.

### *O'ahu District Court Civil Cases Available on the Internet*

Information on new District Court civil cases filed in the First Judicial Circuit after November 15, 2001, becomes available through the Judiciary's Internet website at [www.courts.state.hi.us](http://www.courts.state.hi.us). Internet users can search for a District Court civil case by case number or by name of party, and find information such as document name, and filing date and time. In addition, users can obtain a list of court appearances, including date, time and description of appearance, minutes of the hearing prepared by the court clerk, disposition (if any), and settlement conference report minutes (if any). Generally, the data is current to within 72 hours of the date of a filing of a court document or hearing.

## **APRIL**

### *First Circuit Begins "One Family/One Judge" Project*

The Family Court of the First Judicial Circuit begins a pilot project, "One Family/One Judge." The four judges in the Juvenile Division are assigned to a specific geographic section of O'ahu—Central, Leeward, Honolulu, and Windward—and have primary responsibility for the disposition of the juveniles in their respective areas. The objective is to establish closer relationships between the judges and the children, families, and communities they serve, resulting in a stronger bond that enhances community safety as well as the juveniles' rehabilitation efforts.

Month-By-  
Month  
Highlights

**MAY**

*Law Day*

On May 1, Chief Justice Ronald Moon presents Department of Education Superintendent Patricia Hamamoto with a prototype of a lesson plan to help students learn about judicial independence. The Judiciary produces lesson plans for middle and high schools and distributes the plans, along with copies of a video about judicial independence, to public and private schools throughout the state. The video, entitled "Broken Scales: Justice Under Influence," was produced last year by the Hawai'i Chapter of the American Board of Trial Advocates. The chief justice also presents Michael Gibson, President of the Hawai'i State Bar Association, with a speaker's kit and the video with the hope that attorneys will join state judges to inform the public about the judicial system.

Also to commemorate Law Day, The Honolulu Advertiser publishes four articles written by state judges. The topics of the articles and the authors are: "Civics Education is Critical," Chief Justice Moon; "The Right to Counsel is Critical," Associate Judge Daniel Foley; "Justice isn't Blind to Needy," District Court Judge Reinette Cooper; and "Burden of Proof is Critical," Circuit Court Judge Richard Pollack.

*Agreement Made to Enhance Use of Intermediate Sanctions*

Executive and judicial branch officials sign a landmark agreement to fund and implement a statewide plan to reduce the likelihood that criminals will re-offend and to prevent future victimization through the effective use of intermediate sanctions. The agreement marks an unprecedented collaboration between the state Judiciary and the Executive Branch, namely the state Departments of Health, Public Safety, and the Attorney General.

*Gangnes and McKenzie Sworn In*

On May 22, Hilary Benson Gangnes and Christopher P. McKenzie are sworn in as judges for the District Court of the First Judicial Circuit.

*First Circuit Develops Family Drug Court*

The First Judicial Circuit begins accepting clients into its new Family Drug Court program. The program helps parents at risk of losing their children due to substance abuse problems. Services available through the program include detailed assessment for substance abuse and child safety, psychological evaluations, residential

substance abuse treatment services, and weekly visits to court. Hawai'i is one of the few states that has a family drug court program.



*Hawai'i State Bar Association President Michael Gibson (left), HSBA Executive Director Coralie Matayoshi, and Department of Education Superintendent Patricia Hamamoto join Chief Justice Ronald Moon in celebrating Law Day.*

Month-By-  
Month  
Highlights

*Judiciary Launches New Web Site*

The Judiciary launches a new, more user-friendly Web site at [www.courts.state.hi.us/](http://www.courts.state.hi.us/). The new site features a home page that presents information in a portal format, a familiar and efficient interface employed by search engines and other Web sites that contain an extensive amount of comprehensive information. The categories and subcategories listed offer a single-click entry to key information.

The new Web site also offers more categories to help users quickly identify where the information they are seeking exists, has more ways to navigate through the site, and employs content approaches geared for users including summaries, hyperlinks, bullets, sidebars, and global navigation.

**JUNE**

*Broderick Returns as Administrative Director*

Michael Broderick, who served as the administrative director of the courts for five years before leaving in 2001 to become the executive director of the Hawai'i Justice Foundation, returns as administrative director of the courts in June. Walter Ozawa, the administrative director of the courts from October 2001 to June 2002, becomes the deputy administrative director.

*O'ahu Consolidates Adult Probation Services*

The First Judicial Circuit's adult probation services programs are consolidated into one entity as part of phase two of the Judiciary's Achieving Court Excellence (ACE) initiative.

The First Circuit Court's Adult Probation, Family Court of the First Circuit's Adult Services, and District Court of the First Circuit's Probation branches provide intake, pre-sentence investigation, and court-ordered supervision for adult felony or misdemeanor cases. The objective of the consolidation is to promote uniformity, consistency and standardization of practices and procedures. In addition, resources should be more efficiently utilized and clients will be more effectively monitored and held accountable.

Also included in the consolidation are the former District Court programs that provide community service placement and monitoring services and driver education functions.

*Murakami, Pacarro, August, and Waldorf Sworn in*

On June 7, Paul T. Murakami and Clarence A. Pacarro are sworn in as judges for the District Family Court of the First Circuit and District Court of the First Judicial Circuit, respectively.

Joel August is sworn in as judge for the Circuit Court of the Second Judicial Circuit on June 10.

Marcia J. Waldorf is sworn in as a judge for the Circuit Court of the First Judicial Circuit on June 18. She was previously a judge for the District Court of the First Judicial Circuit.

**AUGUST**

*American Bar Association Honors Waldorf*

First Circuit Court Judge Marcia J. Waldorf receives the 2002 Franklin N. Flaschner Award given annually by the American Bar Association's Judicial Division National Conference of Special Court Judges. The award recognizes an outstanding judge who exemplifies the high ideals, personal character, and judicial competence of the late Chief Judge Franklin H. Flaschner of the District Court of Massachusetts, who was a leader in advancing the quality of justice in special courts and in improving judicial education.



*Judge Waldorf*



Month-By-  
Month  
Highlights

*New Judicial Salary Commission Appointed for 2002-2006 Term*

The new members of the Judicial Salary Commission are Joseph M. Bazemore and Marshall W. Hung. Lorraine H. Akiba, Stanley W. Hong, and Dr. Ruth M. Ono are reappointed to serve an additional four years. Their term of office will expire on July 27, 2006. Hong, chair of the commission during the 1998-2002 term, is re-elected chair. Ono will serve as vice chair.

**SEPTEMBER**

*Juvenile Drug Court Holds First Graduation Ceremony*

The O’ahu Family Court holds its first commencement ceremony for eight juveniles who successfully completed all requirements for the Hawai’i Juvenile Drug Court Program. The Juvenile Drug Court, a minimum eight-month treatment-based program for substance abusing, nonviolent juveniles under 18 years of age, was launched in August 2001. Eligible participants must be 12 to 17 years of age; referred to the Family Court for nonviolent law violation; must have a current pattern of substance abuse and not have a history of sex offenses; and must live on O’ahu and be under the jurisdiction of the Family Court of the First Judicial Circuit.

*Judiciary Airs Video on Judicial Independence*

“Broken Scales: Justice Under Influence,” a video about judicial independence, airs six times on Public Cablevision 16 during September and October and once on KITV in October. The Hawai’i Chapter of the American Board of Trial Advocates presented the video to the Hawai’i State Judiciary to use in its ongoing efforts to educate the public about the court’s role in the American justice system. In the video, Chief Justice Ronald Moon explains to a group of students why judges must be independent when making their decisions.

*Jury Service Web Site and Juror Orientation Video Unveiled*

A Web site to help O’ahu jurors is unveiled on the Internet. The site contains answers to frequently asked questions. Individuals selected by the First Circuit Court for jury service can also find out when they must report for duty through this site. The jury service Web site is created at no cost to the Judiciary as a public service by eHawaiiGov, the State of Hawaii’s Internet portal, which is a collaborative effort between the State of Hawai’i and Hawai’i Information Consortium, Inc. The First Judicial Circuit also premieres an updated juror orientation video which takes viewers through the major activities of a “mock trial.” The video begins with an introduction by Chief Justice Ronald Moon and is narrated by Judges Shackley Raffetto and Frances Wong.



*A crew member works with Chief Justice Ronald Moon during the filming of the First Circuit Court’s juror orientation video.*

Month-By-  
Month  
Highlights

**OCTOBER**

*Hawaii Bar Recognizes History Center, Judge Ibarra*

At its annual convention, the Hawaii State Bar Association (HSBA) presents the King Kamehameha V - Judiciary History Center with its 2002 'Ikena Award, which recognizes an individual or entity for outstanding service to the public through legal education. Since its inception in 1989, the Center has been at the forefront in providing Hawaii's schools, colleges, citizens, and visitors with outstanding law-related educational activities and resources.

The HSBA also presents the 2002 C. Frederick Schutte Award to Judge Ronald Ibarra, Chief Judge of the Third Judicial Circuit, for his involvement in projects to improve the Judiciary.

*Urasenke Association Honors Chief Justice Moon*

At a special tea ceremony in the Supreme Court courtroom, the Friends of the Judiciary History Center and the Urasenke Hawaii Association honor Chief Justice Ronald Moon for his years of dedicated public service. As custodian on behalf of the people of Hawaii, the chief justice accepts a tea bowl dedicated to King Kamehameha I.



*On behalf of the King Kamehameha V – Judiciary History Center and the people of Hawaii, Chief Justice Ronald Moon accepts the tea bowl dedicated to Kamehameha I. Looking on is Ali'i Nui and Grand Master Ali'i Sir Gabriel Makuakane and Jean Ariyoshi, wife of former Governor George Ariyoshi.*

Last summer, two tea bowls were dedicated at a "Kencha Shiki" tea ceremony held at 'Iolani Palace for the 30<sup>th</sup> anniversary of Urasenke in Hawaii and overseas. The bowl dedicated to Kamehameha I—accepted by Chief Justice Moon—was presented to the King Kamehameha V - Judiciary History Center at Ali'iolani Hale.

*Judiciary Recognizes Outstanding Employees*

Chief Justice Ronald Moon presents 12 awards to Hawaii State Judiciary employees and groups who have made outstanding contributions to the state court system.

The Meritorious Service Award honors individuals and groups who have consistently maintained a high level of excellence on the job and have improved the efficiency and operations of the Judiciary. Individuals awarded the Meritorious Service Award are Vera Tabe, Court Support Services Branch, Fifth Judicial Circuit (Kauai), and Jeanne Taketa, Fiscal Division, District Court of the First Judicial Circuit (Oahu).

Two groups from the Family Court of the First Judicial Circuit—the Children & Youth Services Branch and Program Specialists—receive the group Meritorious Service Award.

Spirit of the Judiciary Awards recognize employees who are helpful and show a positive image of the Judiciary. Recipients are Liesje Cattaneo, Adult Probation Division, First Circuit Court; Gayle Miyamoto, Traffic Violations Bureau, District Court of the Second Judicial Circuit (Maui); Spencer Lee, Adult Probation Division, First Circuit Court; Andrew Nagata, Office of the Public Guardian-Maui, Administration; and Glenn Tsutahara, Court Services Section, District Court of the Third Judicial Circuit (Big Island).

Individual Certificates of Commendation are awarded to Mabel Asato, Detention Services Branch, Family Court of the First Judicial Circuit, and Glen Yorimoto, Office of the Deputy Chief Court Administrator, District Court of the First Judicial Circuit.

The Adult Probation Division, Supervision Sections 1, 2, 3, and 4, First Circuit Court, receives a Group Commendation Certificate.

Month-By-  
Month  
Highlights

**NOVEMBER**

*Third Judicial Circuit Launches Drug Court*

The Third Judicial Circuit launches a Drug Court program in Hilo and Kona. The minimum 12-month treatment-based program channels nonviolent, substance-abusing adult offenders from the traditional criminal justice system. Offenders receive comprehensive treatment and services, such as employment and education. Participants are intensely supervised, must submit to frequent drug tests, and initially must appear weekly before the presiding judge.

**DECEMBER**

*Chief Justice Moon Receives Honorary Membership in Royal Order of Kamehameha I*

In a special ceremony held in the Supreme Court courtroom, Chief Justice Ronald Moon receives the title of Ali'i and honorary membership into the Most Noble Royal Order of Kamehameha I. The occasion coincides with the 172<sup>nd</sup> birthday of King Kamehameha V. The chief justice is chosen for this prestigious honor because of the aloha he has shown the Royal Order of Kamehameha and for his assistance in restoring the memory of the fifth sovereign to Ali'iolani Hale, one of the buildings named for Kamehameha V. Chief Justice Moon is the sixth living non-Hawaiian with the title of Ali'i.

*Thirty-three Judges Evaluated*

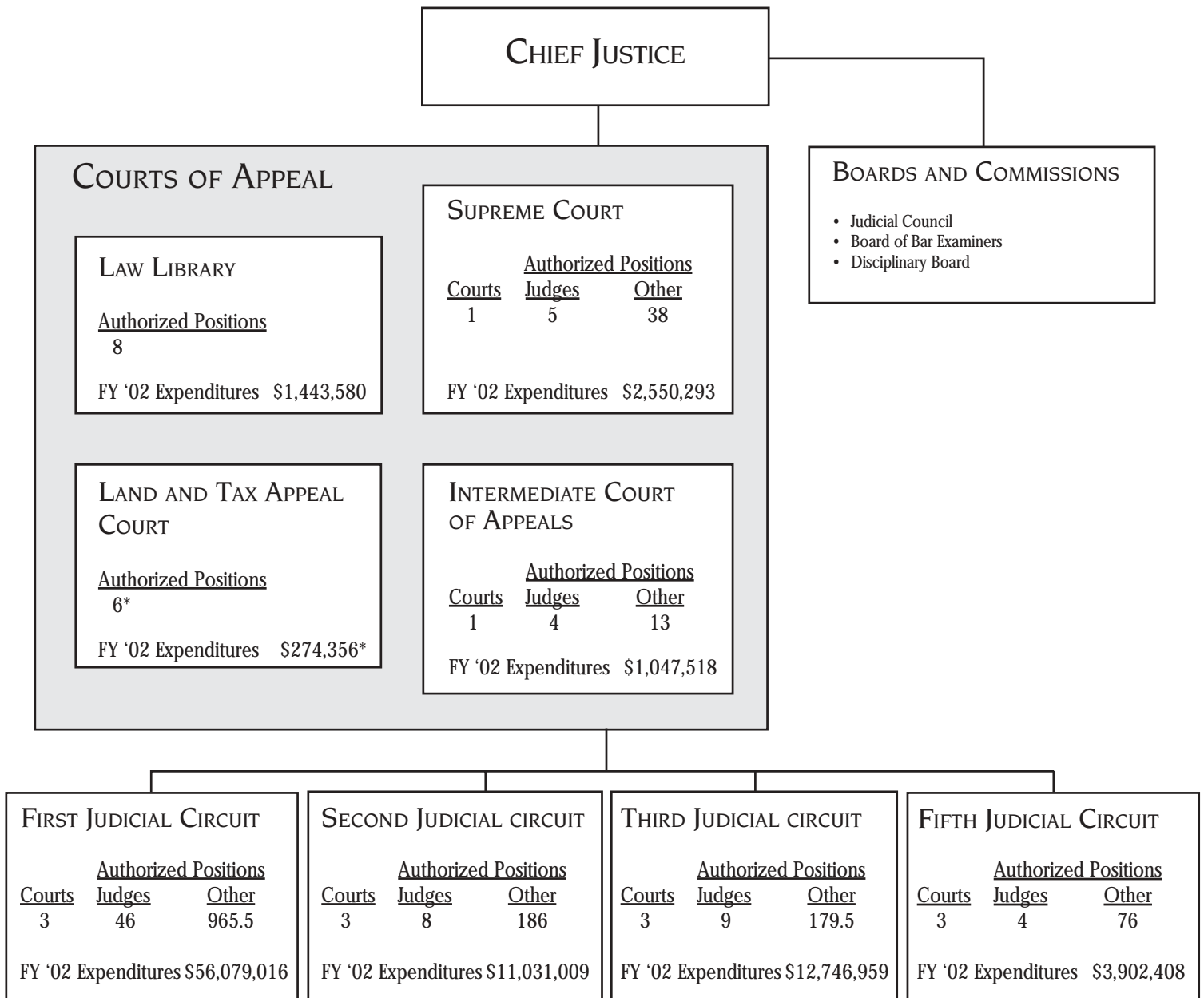
The eighth Judicial Performance Program report provides the results of performance evaluations of 33 judges, who performed well in the areas evaluated. All currently eligible justices and full-time judges have been evaluated at least once.

The mean scores for 10 circuit court judges are: 4.0 in Legal Ability; 4.1 in Judicial Management Skills; 4.3 for Comportment; and 4.1 in Settlement and/or Plea Agreement Ability. These scores are based on a scale of possible responses ranging from one for Poor to five for Excellent.

The average scores for eight full-time family court judges are: 4.0, Legal Ability; 4.0, Judicial Management Skills; 4.0, Comportment; and 3.9, Settlement and/or Plea Agreement Ability. The scores also range from one for Poor to five for Excellent.

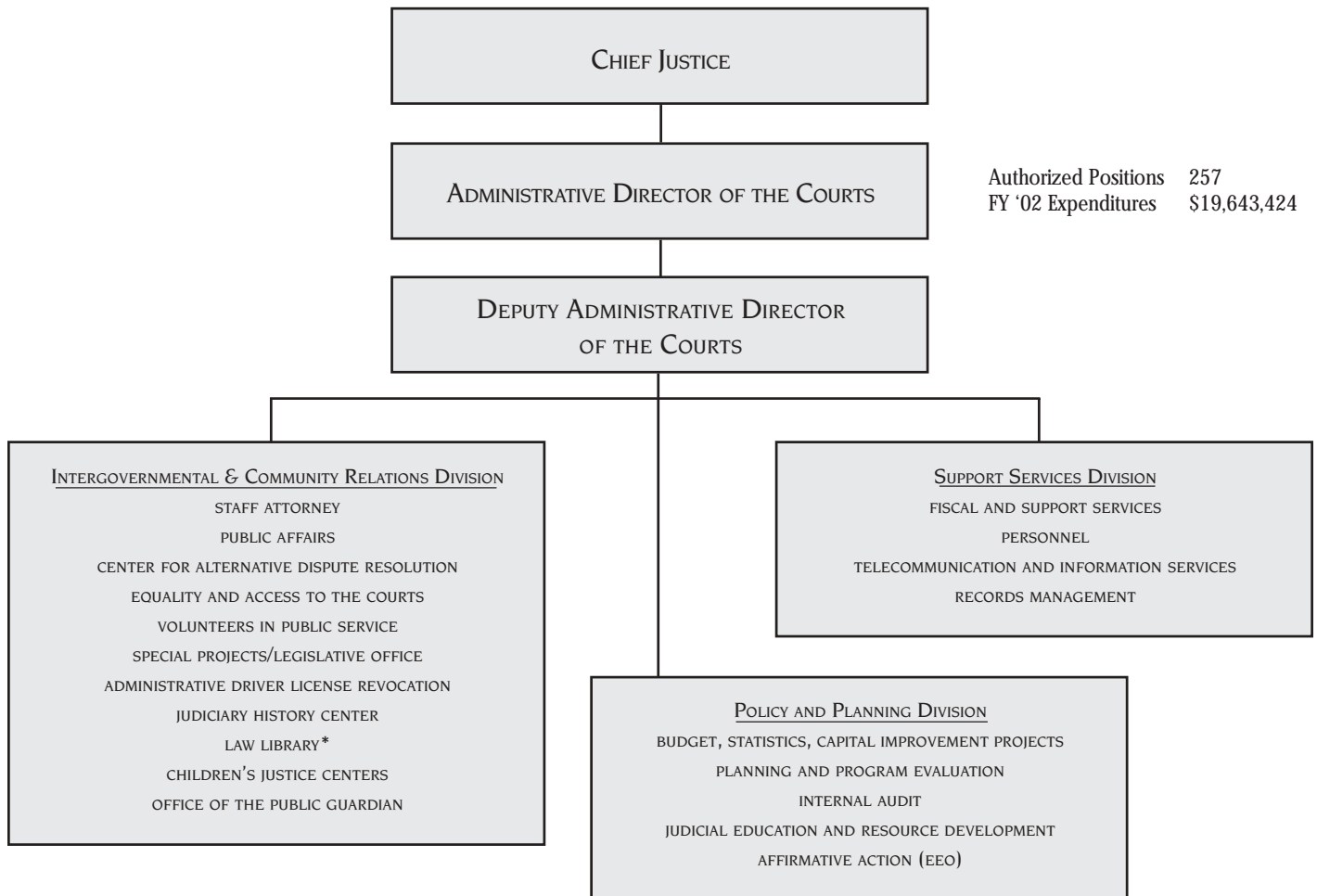
Fifteen per diem judges are evaluated and their average scores are: 3.9, Legal Ability; 3.8, Settlement and/or Plea Agreement Ability; and 4.0, Judicial Management Skills. Because their Legal Ability and Judicial Management Skills sections have fewer questions than those for the circuit court and full-time family court judges, comparing per diem judges' scores with the others is not a fair comparison.

# Structure of the Court System



\*Funding and positions assigned to First Judicial Circuit.

# Structure of the Office of the Administrative Director of the Courts



\* Funding reflected under Courts of Appeal

## New Judicial Appointments



Judge Joel E. August  
June 10, 2002 –  
June 9, 2012

### JUDGE JOEL E. AUGUST

Judge Joel E. August was appointed as judge of the Second Judicial Circuit (Maui), filling the vacancy created by the retirement of Judge Artemio Baxa. Since 1982, Judge August served as a per diem judge for the District Court of the Second Judicial Circuit. As a partner with Lowenthal & August since 1980, he specialized in torts, medical malpractice, land use, and criminal defense. Judge August served as president of the Hawai'i State Bar Association in 2000. He received his law degree from the University of California at Berkeley, Boalt Hall.



Judge Hilary Benson  
Gangnes  
May 22, 2002 –  
May 21, 2008

### JUDGE HILARY BENSON GANGNES

Judge Hilary Benson Gangnes was appointed to the District Court of the First Judicial Circuit (O'ahu) to fill the vacancy created by the retirement of Judge Tenney Tongg. Prior to her appointment, she was a partner in the law firm of Bronster Crabtree and Hoshibata since January 2001. She also served as a per diem judge for the District Court of the First Judicial Circuit since May 1997. Judge Gangnes received her law degree from the Seattle University School of Law.



Judge Christopher P.  
McKenzie  
May 22, 2002 –  
May 21, 2008

### JUDGE CHRISTOPHER P. MCKENZIE

Judge Christopher P. McKenzie was appointed as judge of the District Court of the First Judicial Circuit, filling the vacancy created by the retirement of Judge Russell Blair. Since July 1995, he served as a per diem judge for the District Family Court of the First Judicial Circuit. Previously, he was in private practice, where he had extensive experience handling personal injury cases. Judge McKenzie received his law degree from the University of San Francisco.

## *New Judicial Appointments*

### **JUDGE PAUL T. MURAKAMI**

Judge Paul T. Murakami was appointed to the District Family Court of the First Judicial Circuit to fill the vacancy created by the retirement of Judge Diana Warrington. Since 1995, he served as a per diem judge for the District Family Court of the First Judicial Circuit. Previously, he was in private practice as a sole practitioner, specializing in family law and criminal defense. Judge Murakami received his law degree from the William S. Richardson School of Law.



Judge Paul T. Murakami  
June 7, 2002 –  
June 6, 2008

### **JUDGE CLARENCE A. PACARRO**

Judge Clarence A. Pacarro was appointed to the District Court of the First Judicial Circuit to fill the vacancy created by the retirement of Judge I. Norman Lewis. He served as a per diem judge for the District Court of the First Judicial Circuit since 2000. Judge Pacarro previously was a sole practitioner in private practice, emphasizing all aspects of litigation including personal injury, criminal defense, and contracts. He received his law degree from The Lewis and Clark Law School.



Judge Clarence A. Pacarro  
June 7, 2002 –  
June 6, 2008

### **JUDGE MARCIA J. WALDORF**

Judge Marcia J. Waldorf was appointed to the Circuit Court of the First Circuit, filling a vacancy left by Judge Gail C. Nakatani. Since 1985, she served as a district court judge of the First Judicial Circuit before her selection to the higher court. Previously, Judge Waldorf worked as a state public defender, where she dealt primarily with criminal and drunken driving cases. A Cum Laude graduate of the University of California at Davis, she received her law degree from the University of San Francisco Law School.



Judge Marcia J. Waldorf  
June 18, 2002 –  
June 17, 2012

## *Courts of Appeal*

The Judiciary's appellate level is composed of the Supreme Court and the Intermediate Court of Appeals (ICA). The Courts of Appeal hear appeals from all trial courts and specific state boards and agencies.

Generally, cases assigned to the Supreme Court involve the formulation and development of the law, while cases assigned to the ICA involve possible trial court error or the application of settled law. An ICA decision may be reviewed by the Supreme Court upon request by any party, though the Supreme Court may exercise its discretion in accepting the matter.

Members of the Supreme Court and ICA are appointed to an initial ten-year term by the Governor. The Governor selects appointees from a list of not less than four and not more than six names submitted by the Judicial Selection Commission. All appointments must be confirmed by the State Senate.

To be considered for appointment, a person must be a resident and a citizen of the State and of the United States and licensed to practice law by the Supreme Court of Hawaii for not less than ten years preceding their nomination. Justices and judges may be retained by the Judicial Selection Commission, but must retire at age 70.



*Courts of Appeal*

**ACTIONS FILED**

There were 821 primary cases filed in the Courts of Appeal during the 2001-02 fiscal year – 757 appeals and 64 original proceedings.

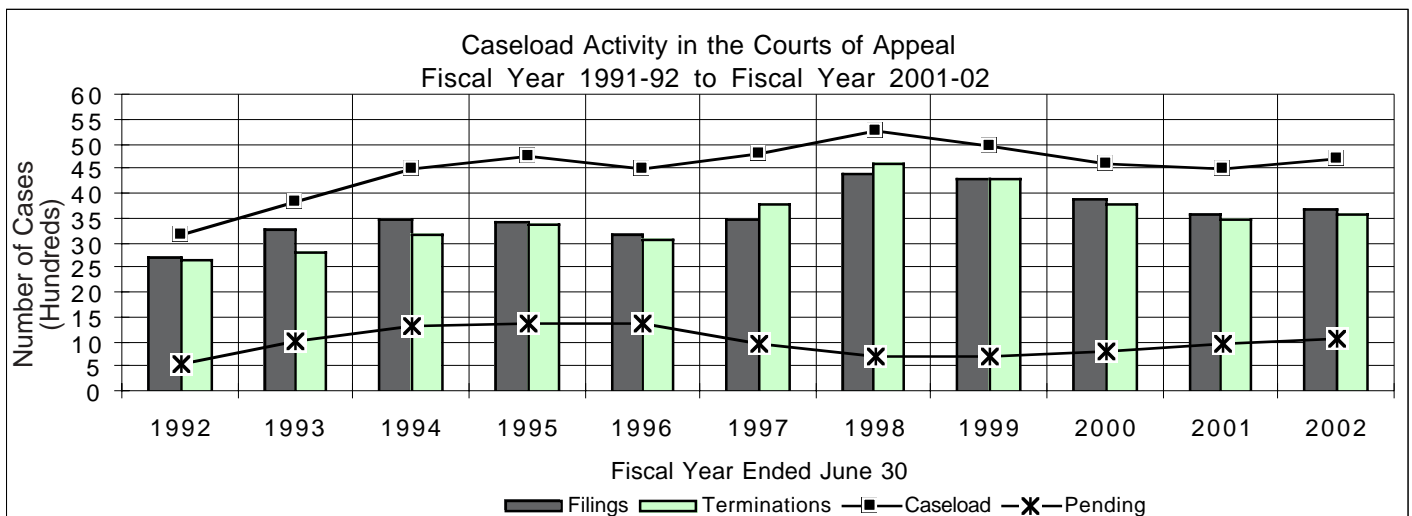
Supplemental proceedings, which arise out of primary cases, are comprised of motions, special stipulations, and applications for certiorari. In fiscal year 2001-02, 2,873 supplemental proceedings were filed in the Courts of Appeal.

**STATUS OF PENDING CASES**

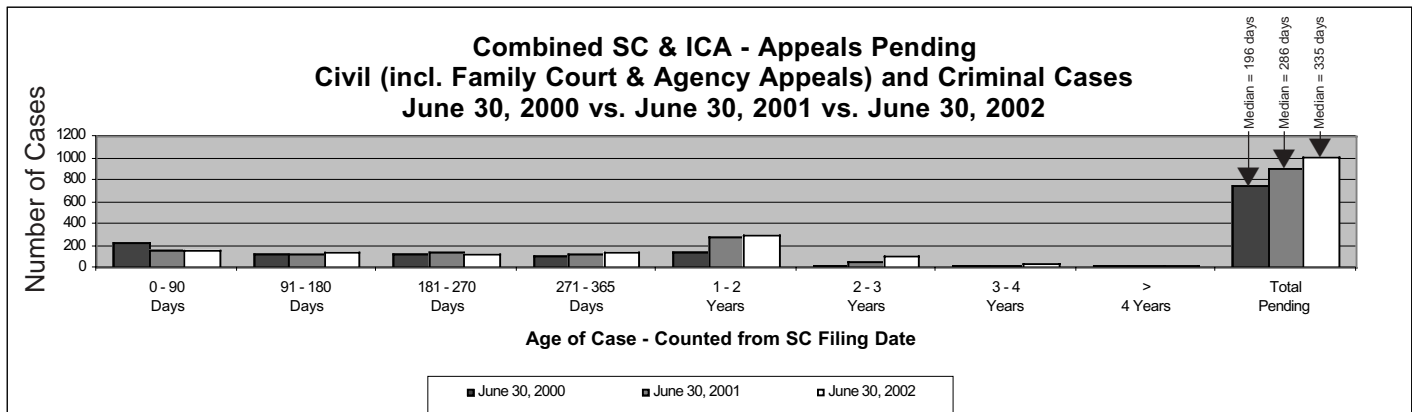
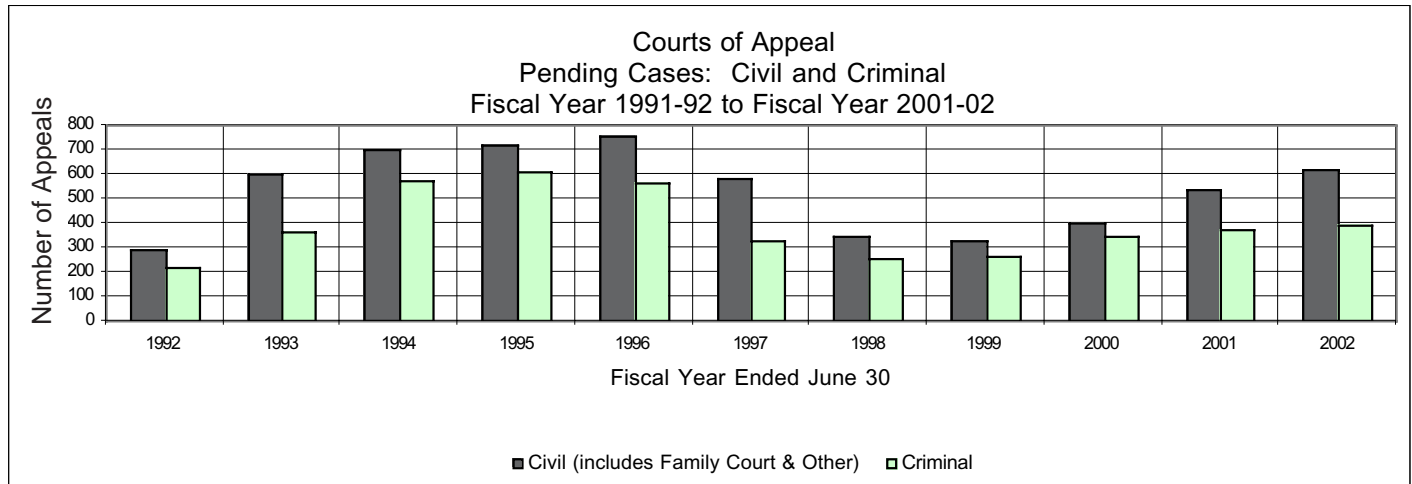
There were 1,022 primary cases and 74 supplemental proceedings pending in the Courts of Appeal at the end of the fiscal year. Of the 1,096 pending cases, 66% were being briefed, 31% were ready to be scheduled for hearing or, in the case of supplemental proceedings, ready and awaiting decision without further hearing, and 3% had been taken under advisement and were awaiting decision.

**TERMINATIONS**

The Courts of Appeal terminated 724 primary cases during fiscal year 2001-02 compared to 662 primary cases terminated during the previous fiscal year. Terminations of supplemental proceedings increased from 2,788 last year to 2,878 this year.



Courts of Appeal



## Supreme Court

### STRATEGIC MISSION

The mission of the Supreme Court is to provide timely disposition of cases, including resolution of particular disputes and explication of applicable law; license and discipline attorneys; discipline judges; and make rules of procedure for all Hawai'i courts.

### COURT DESCRIPTION

The Supreme Court is the State's highest court. Its decisions are binding on all other Hawai'i courts.

In Hawai'i, the primary mission of the Supreme Court is to review the decisions of the lower courts in which appeals have been allowed. Cases that are reviewed by appeal have been initiated in either a trial court or an agency. The Supreme Court has original jurisdiction in proceedings for extraordinary relief in the nature of mandamus, certiorari, and prohibition, and in habeas corpus proceedings.

Each appeal is decided on the basis of the written record. In some cases, the court may hear oral arguments. The court takes no evidence, except in original proceedings. All five justices hear each case.

The members of the Supreme Court are Chief Justice Ronald T.Y. Moon, and Associate Justices Steven H. Levinson, Paula A. Nakayama, Mario R. Ramil, and Simeon R. Acoba, Jr.

Members of the Supreme Court are appointed to an initial ten-year term by the Governor. The Governor selects appointees from a list of not less than four and not more than six names submitted by the Judicial

Selection Commission. All appointments must be confirmed by the State Senate. To be considered for appointment, a person must be a resident and a citizen of the State and of the United States and licensed to practice law by the Supreme Court of Hawai'i for not less than ten years preceding their nomination. Justices may be retained by the Judicial Selection Commission, but must retire by age 70.

In addition to its appellate functions, the Supreme Court is also responsible for the formulation of court rules, the licensing and disciplining of attorneys, and the determination of judicial fitness.

Chief Justice Moon and the Supreme Court are assisted by committees of lawyers and non-lawyers and by staff. The Judicial Council, a citizen's group, provides advice about the administration of justice. The Board of Examiners examines the qualifications of those who wish to practice law in the State.

The Commission on Judicial Conduct reviews complaints against judges and recommends discipline to the Supreme Court. The Office of Disciplinary Counsel investigates complaints against lawyers and recommends appropriate discipline to the Supreme Court.

The Supreme Court Staff Attorney heads a staff of four attorneys who assist the Supreme Court in the processing of its work.

In Hawai'i, the Chief Justice is responsible for the administration of all courts in the State and appoints an administrative director of the courts to manage the non-judicial aspects of the Judiciary.

## Supreme Court

### ACTIONS FILED

During fiscal year 2001-02, 819 primary cases were filed in the Supreme Court. There were also 2,711 supplemental proceedings filed before the Supreme Court.

### TERMINATIONS

Terminations of primary cases increased from last fiscal year – 688 cases to 778. These included 258 cases which were assigned to the Intermediate Court of Appeals.

### STATUS OF PENDING CASES

At the end of the fiscal year, 777 primary cases and 48 supplemental proceedings were pending. All pending supplemental proceedings were complete and awaiting decision.

### JUSTICES AND THEIR TERMS

CHIEF JUSTICE RONALD T.Y. MOON  
*March 31, 1993 - March 30, 2003*

ASSOCIATE JUSTICE STEVEN H. LEVINSON  
*April 7, 2002 - April 6, 2012*

ASSOCIATE JUSTICE PAULA A. NAKAYAMA  
*April 22, 1993 - April 21, 2003*

ASSOCIATE JUSTICE MARIO R. RAMIL  
*Retired December 30, 2002*

ASSOCIATE JUSTICE SIMEON R. ACOBA, JR.  
*May 19, 2000 - May 18, 2010*

*Intermediate  
Court of  
Appeals*

**STRATEGIC MISSION**

The mission of the Intermediate Court of Appeals is to provide timely disposition of appeals from trial courts and state agencies, including the resolution of the particular dispute and explication of the law for the benefit of the litigants, the bar, and the public.

**COURT DESCRIPTION**

The second highest court in the State, the Intermediate Court of Appeals (ICA) shares concurrent jurisdiction with the Supreme Court in reviewing legal matters brought before the Courts of Appeal. The ICA's cases are assigned by the Supreme Court. Usually, the ICA reviews trial court decisions for errors while the Supreme Court reviews matters involving the formulation of the law. The ICA has the authority to reverse, remand, modify, or affirm decisions in all trial courts. Its decisions are subject to review by the Supreme Court.

The ICA is comprised of four judges, who sit in panels of three.

## *Intermediate Court of Appeals*

### **ACTIONS FILED**

A total of 260 primary cases and 162 supplemental proceedings were assigned to the Intermediate Court of Appeals in fiscal year 2001-02. Primary cases are assigned to the Intermediate Court of Appeals from the Supreme Court while supplemental proceedings may be filed directly with the Intermediate Court of Appeals or transferred from the Supreme Court.

### **TERMINATIONS**

During fiscal year 2001-02, the Intermediate Court of Appeals terminated 58% of its total caseload. This figure includes 204 primary cases and 165 supplemental proceedings.

### **STATUS OF PENDING CASES**

Two hundred forty five cases and 26 supplemental proceedings were pending at the end of the 2001-02 fiscal year, 42% of the total caseload for the year.

### **JUDGES AND THEIR TERMS**

CHIEF JUDGE JAMES S. BURNS  
*May 14, 2002 - May 13, 2012*

ASSOCIATE JUDGE CORINNE K.A. WATANABE  
*May 11, 2002 - May 10, 2012*

ASSOCIATE JUDGE JOHN S.W. LIM  
*June 1, 1999 - May 31, 2009*

ASSOCIATE JUDGE DANIEL R. FOLEY  
*October 2, 2000 - October 1, 2010*

## *Land Court*

### **DESCRIPTION**

The Land Court is a statewide court of record which has exclusive jurisdiction of all applications for the registration of title to land and easements or rights in land held and possessed in fee simple within the state. It has the power to hear and determine all questions arising upon applications as they come before it under chapter 501 of the Hawai'i Revised Statutes, subject to the rights of appeal.

### **ACTIONS FILED**

In fiscal year 2001-02, 12 contested cases were filed in the Land Court. Combined with the 114 cases pending at the end of the last fiscal year, the Land Court handled a total caseload of 126 cases.

### **TERMINATIONS AND PENDING CASES**

Three contested cases were terminated during fiscal year 2001-02, leaving 123 cases pending at the start of the new fiscal year.

## *Tax Appeal Court*

### **DESCRIPTION**

The Tax Appeal Court is a statewide court with jurisdiction over disputes concerning property, excise, liquor, income and insurance taxes.

The Tax Appeal Court is located in Honolulu and convenes in the other circuits (Hawai'i, Maui and Kaua'i) at least once each year to hear disputes involving real property taxes.

### **ACTIONS FILED**

In fiscal year 2001-02, 72 cases were filed in the Tax Appeal Court. Combined with the 703 pending cases at the end of the last fiscal year, the Tax Appeal Court's total caseload was 775 cases.

### **TERMINATIONS AND PENDING CASES**

The Tax Appeal Court terminated a total of 97 cases or 13% of the Court's caseload during the 2001-02 fiscal year. Six hundred seventy eight cases remained pending at the close of the fiscal year.

## *Trial Courts*

Hawaii's trial level is comprised of Circuit Courts and District Courts. Family Courts are included in the Circuit Courts. Hawaii's trial courts function in four judicial circuits that correspond approximately to the geographical areas served by the counties.

The First Judicial Circuit serves the City and County of Honolulu.

The Second Judicial Circuit serves the County of Maui, which includes the islands of Maui, Moloka'i (including the settlement of Kalawao), and Lāna'i.

The Third Judicial Circuit, divided into the districts of Hilo and Kona, administers the County of Hawai'i.

The Fourth Judicial Circuit is no longer used as a circuit designation. The Third and Fourth Circuits merged in 1943.

The Fifth Judicial Circuit serves the County of Kaua'i, which includes the islands of Kaua'i and Ni'ihau.



## Circuit Courts

### STRATEGIC MISSION

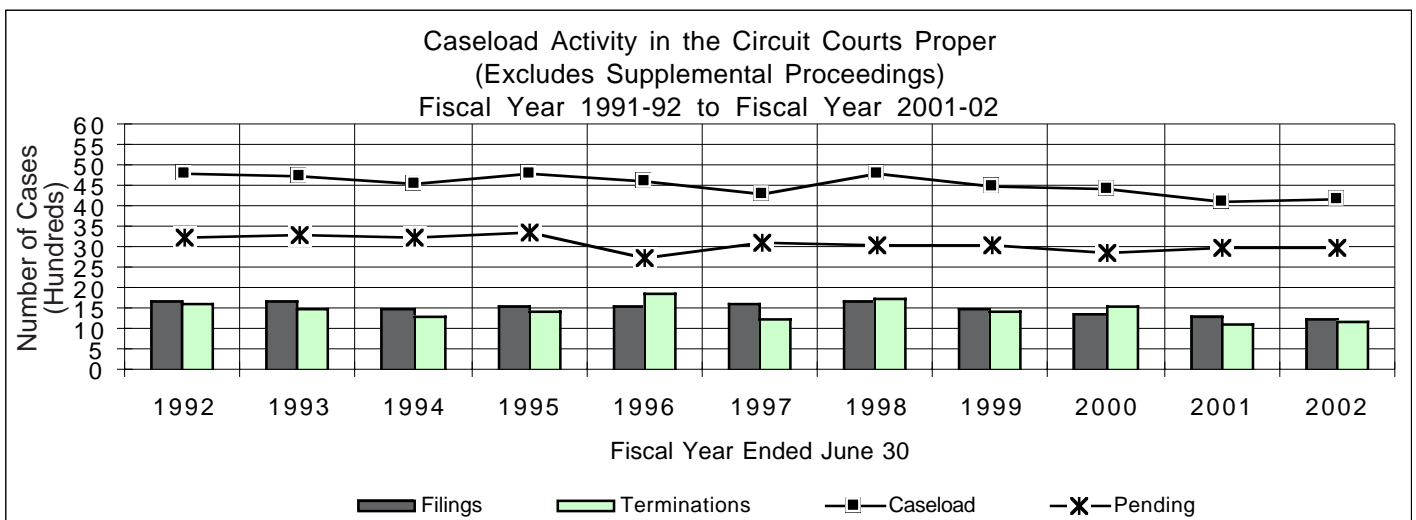
The mission of the Circuit Court is to expeditiously and fairly adjudicate or resolve all matters within its jurisdiction in accordance with law.

### DESCRIPTION

All jury trials are held in the Circuit Courts, which have general jurisdiction in civil and criminal cases. They also have exclusive jurisdiction in probate, guardianship and criminal felony cases, as well as civil cases where the contested amount exceeds \$20,000. Circuit Courts share concurrent jurisdiction

with District Courts in civil non-jury cases that specify amounts between \$10,000-\$20,000. Additional cases dispensed by the Circuit Courts include mechanics' lien, and misdemeanor violations transferred from the District Courts for jury trials.

Circuit Court judges are appointed to ten-year terms by the Governor from a list of not less than four and not more than six nominees provided by the Judicial Selection Commission. The nominees are subject to confirmation by the State Senate.



## Circuit Courts

### **ACTIONS FILED**

Filings in the Circuit Courts Proper totaled 12,595 cases in fiscal year 2001-02. Of the cases filed, 4,770 or 38%, were civil cases, and 4,844, or 38%, were criminal cases.

### **TERMINATIONS**

During fiscal year 2001-02, the Circuit Courts terminated 11,685 cases.

### **STATUS OF PENDING CASES**

At the end of the 2001-02 fiscal year, a total of 36,409 cases were pending in the Circuit Courts Proper.

### **ADULT PROBATION DIVISIONS**

Statewide reporting of Adult Probation activity showed that there were 3,299 investigations completed during fiscal year 2001-02. In supervision cases, where persons were placed on probation or subject to court-ordered control, including offenders released from the Hawai'i State Hospital, there were 2,041 new placements added to the 10,576 cases pending from the previous fiscal year. Of these, 1,743 cases were closed, leaving 10,874 open at the end of the 2001-02 fiscal year.

*Judges and  
their Terms*

*Circuit Court  
Judges*

**FIRST JUDICIAL CIRCUIT**

KARL K. SAKAMOTO, 1<sup>ST</sup> DIVISION  
*June 1, 2000 - May 31, 2010*

STEVEN S. ALM, 2<sup>ND</sup> DIVISION  
*May 14, 2001 - May 13, 2011*

VICTORIA S. MARKS, 3<sup>RD</sup> DIVISION  
*May 26, 1994 - May 25, 2004*

GAIL C. NAKATANI  
RETIRED *May 10, 2002*

MARCIA J. WALDORF, 4<sup>TH</sup> DIVISION  
*June 18, 2002 - June 17, 2012*

EDEN ELIZABETH HIFO, 5<sup>TH</sup> DIVISION  
*April 30, 1993 - April 29, 2003*

MICHAEL D. WILSON, 6<sup>TH</sup> DIVISION  
*May 10, 2000 - May 9, 2010*

RICHARD W. POLLACK, 7<sup>TH</sup> DIVISION  
*May 10, 2000 - May 9, 2010*

RICHARD K. PERKINS, 8<sup>TH</sup> DIVISION  
*May 6, 1994 - May 5, 2004*

VIRGINIA LEA CRANDALL, 9<sup>TH</sup> DIVISION  
*April 1, 2001 - March 31, 2011*

WILFRED K. WATANABE, 10<sup>TH</sup> DIVISION  
*April 30, 1995 - April 29, 2005*

KAREN S. S. AHN, 11<sup>TH</sup> DIVISION  
*May 10, 2000 - May 9, 2010*

SANDRA A. SIMMS, 12<sup>TH</sup> DIVISION  
*May 26, 1994 - May 25, 2004*

DEXTER D. DEL ROSARIO, 13<sup>TH</sup> DIVISION  
*April 15, 1994 - April 14, 2004*

GARY W. B. CHANG, 14<sup>TH</sup> DIVISION  
*June 1, 1999 - May 31, 2009*

KAREN N. BLONDIN, 15<sup>TH</sup> DIVISION  
DEPUTY CHIEF JUDGE  
CIVIL ADMINISTRATION  
*May 11, 2002 - May 10, 2012*

MARIE N. MILKS, 16<sup>TH</sup> DIVISION  
*March 16, 1994 - March 15, 2004*

REYNALDO D. GRAULTY, 17<sup>TH</sup> DIVISION  
*March 5, 1999 - March 4, 2009*

FRANCES Q. F. WONG, 18<sup>TH</sup> DIVISION  
DEPUTY CHIEF JUDGE/  
SENIOR FAMILY COURT JUDGE  
*May 11, 2002 - May 10, 2012*

MICHAEL A. TOWN, 19<sup>TH</sup> DIVISION  
*April 30, 1993 - April 29, 2003*

COLLEEN K. HIRAI, 20<sup>TH</sup> DIVISION  
CHIEF JUDGE  
*May 6, 1994 - May 5, 2004*

DAN T. KOCHI, 21<sup>ST</sup> DIVISION  
DEPUTY CHIEF JUDGE  
CRIMINAL ADMINISTRATION  
*April 15, 1994 - April 14, 2004*

SABRINA S. MCKENNA, 22<sup>ND</sup> DIVISION  
*June 30, 1995 - June 29, 2005*

DERRICK H. M. CHAN, 23<sup>RD</sup> DIVISION  
*August 25, 2000 - August 24, 2010*

*Judges and  
their Terms*

*Circuit Court  
Judges*

**SECOND JUDICIAL CIRCUIT**

SHACKLEY F. RAFFETTO, 1<sup>ST</sup> DIVISION  
CHIEF JUDGE/SENIOR FAMILY COURT JUDGE  
*June 9, 1994 - June 8, 2004*

JOEL E. AUGUST, 2<sup>ND</sup> DIVISION  
*June 10, 2002 - June 9, 2012*

JOSEPH E. CARDOZA, 3<sup>RD</sup> DIVISION  
*June 24, 1999 - June 23, 2009*

**THIRD JUDICIAL CIRCUIT**

GREG K. NAKAMURA, 1<sup>ST</sup> DIVISION  
DEPUTY CHIEF JUDGE/  
SENIOR FAMILY COURT JUDGE  
*April 18, 1994 - April 17, 2004*

RIKI MAY AMANO, 2<sup>ND</sup> DIVISION  
*April 12, 1993 - April 11, 2003*

RONALD IBARRA, 3<sup>RD</sup> DIVISION  
CHIEF JUDGE  
*May 10, 1999 - May 9, 2009*

**FIFTH JUDICIAL CIRCUIT**

GEORGE M. MASUOKA, 1<sup>ST</sup> DIVISION  
CHIEF JUDGE/SENIOR FAMILY COURT JUDGE  
*July 8, 1998 - July 7, 2008*

CLIFFORD L. NAKEA, 2<sup>ND</sup> DIVISION  
*September 22, 2000 - September 21, 2010*

## Family Courts

### STRATEGIC MISSION

The mission of the Family Court is to provide a fair, speedy, economical and accessible forum for the resolution of matters involving families and children.

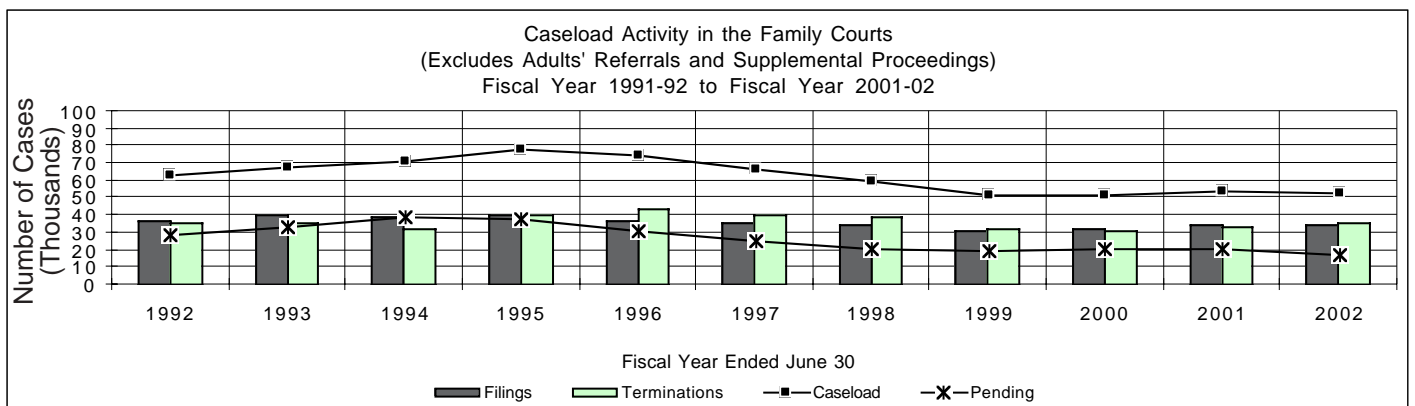
### DESCRIPTION

The Family Courts were established by statute in 1965 to deal with virtually all legal problems impinging on Hawaii's families and children.

The Family Court hears all legal matters involving children, such as delinquency, waiver, status offenses, abuse and neglect,

termination of parental rights, adoption, guardianships, and detention. The Family Court also hears traditional domestic relations cases, including divorce, nonsupport, paternity, uniform child custody jurisdiction cases, and miscellaneous custody matters.

District Family Court judges are appointed to six-year terms by the Chief Justice from a list of at least six names submitted for each opening by the Judicial Selection Commission, subject to confirmation by the State Senate.



## *Family Courts*

### **ACTIONS FILED**

A total of 34,241 cases were filed in the Family Courts in fiscal year 2001-02.

### **TERMINATIONS**

Terminations totaled 35,833 in fiscal year 2001-02.

### **STATUS OF PENDING CASES**

There were 17,009 cases pending at the end of fiscal year 2001-02.

*Judges and  
their Terms*

**FIRST JUDICIAL CIRCUIT**

FRANCES Q. F. WONG, FIRST CIRCUIT COURT  
18<sup>TH</sup> DIVISION  
DEPUTY CHIEF JUDGE/  
SENIOR FAMILY COURT JUDGE  
May 11, 2002 - May 10, 2012

STEVEN S. ALM, FIRST CIRCUIT COURT  
2<sup>ND</sup> DIVISION  
May 14, 2001 - May 13, 2011

MARCIA J. WALDORF, FIRST CIRCUIT COURT  
4<sup>TH</sup> DIVISION  
June 18, 2002 - June 17, 2012

R. MARK BROWNING  
June 6, 1997- June 5, 2003

JOHN C. BRYANT, JR.  
*Retired September 30, 2002*

DARRYL Y. C. CHOY  
January 4, 2000 - January 3, 2006

KENNETH E. ENRIGHT  
February 28, 1997 - February 27, 2003

LINDA K. C. LUKE  
December 29, 1998 - December 28, 2004

PAUL T. MURAKAMI  
June 7, 2002 - June 6, 2008

KAREN M. RADIUS  
December 9, 2000 - December 8, 2006

ALLENE K. SUEMORI  
March 31, 1999 - March 30, 2005

BODE A. UALE  
October 27, 1998 - October 26, 2004

**SECOND JUDICIAL CIRCUIT**

SHACKLEY F. RAFFETTO, SECOND CIRCUIT COURT  
1<sup>ST</sup> DIVISION  
CHIEF JUDGE/SENIOR FAMILY COURT JUDGE  
June 9, 1994 - June 8, 2004

GERONIMO VALDRIZ, JR.  
May 26, 2000 - May 25, 2006

ERIC G. ROMANCHAK  
October 29, 2000 - October 28, 2006

**THIRD JUDICIAL CIRCUIT**

GREG K. NAKAMURA, THIRD CIRCUIT COURT  
1<sup>ST</sup> DIVISION  
DEPUTY CHIEF JUDGE/  
SENIOR FAMILY COURT JUDGE  
April 18, 1994 - April 17, 2004

BEN H. GADDIS  
May 17, 2001 - May 16, 2007

ALEY K. AUNA, JR.  
April 4, 2000 - April 3, 2006

TERENCE T. YOSHIOKA  
April 28, 2000 - April 27, 2006

**FIFTH JUDICIAL CIRCUIT**

GEORGE M. MASUOKA, FIFTH CIRCUIT COURT  
1<sup>ST</sup> DIVISION  
CHIEF JUDGE/SENIOR FAMILY COURT JUDGE  
July 8, 1998 - July 7, 2008

CALVIN K. MURASHIGE  
June 25, 1999 - June 24, 2005

*Family Court  
Judges*

## District Courts

### STRATEGIC MISSION

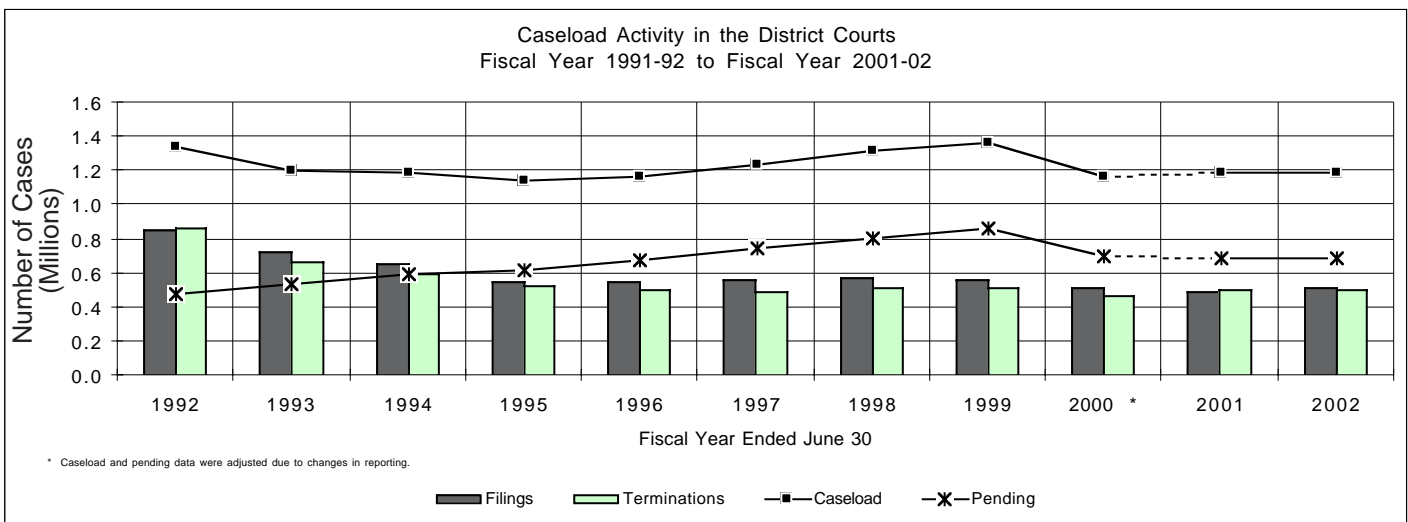
The mission of the District Court is to serve the people of Hawai'i through the fair and efficient adjudication and resolution of cases and controversies brought before it.

### DESCRIPTION

The District Courts have exclusive jurisdiction over traffic infractions, summary possession or ejection proceedings (landlord-tenant), regardless of the amount of the claim. The District Courts also have jurisdiction over non-jury trial civil cases where the debt, amount, damages, or value of the property claimed does not exceed

\$20,000, or where the remedy sought is specific performance valued under \$20,000, criminal offenses punishable by fine or by imprisonment not exceeding one year, cases arising from violations of a county ordinance, and petitions for restraining orders for relief from and for injunctions against harassment.

District Court judges are appointed to six-year terms by the Chief Justice from a list of at least six names submitted for each opening by the Judicial Selection Commission, subject to confirmation by the State Senate.





*District  
Courts*

**ACTIONS FILED**

During the 2001-02 fiscal year, 511,544 cases were filed in the District Courts. Traffic violation cases constituted the bulk of the filings, accounting for 85% of all case filings. Civil actions represented approximately 4% of filings, criminal actions 10%, and other violations 1%.

**TERMINATIONS**

A total of 507,336 cases were terminated in the District Courts during the fiscal year.

**PENDING CASES**

There were 689,356 cases pending at the end of fiscal year 2001-02.

## Judges and their Terms

### District Court Judges

#### **FIRST JUDICIAL CIRCUIT**

DAVID L. FONG  
*Retired October 31, 2002*

HILARY BENSON GANGNES  
*May 22, 2002 - May 21, 2008*

COLETTE Y. GARIBALDI  
DEPUTY CHIEF JUDGE  
*February 28, 1997 - February 27, 2003*

LESLIE ANN HAYASHI  
*November 5, 2002 - November 4, 2008*

GERALD H. KIBE  
*January 6, 2001 - January 5, 2007*

GEORGE Y. KIMURA  
*May 22, 1998 - May 21, 2004*

DAVID W. LO  
*August 23, 2000 - August 22, 2006*

CHRISTOPHER P. MCKENZIE  
*May 22, 2002 - May 21, 2008*

RUSSEL S. NAGATA  
*October 5, 1998 - October 4, 2004*

RHONDA A. NISHIMURA  
*June 6, 1997 - June 5, 2003*

CLARENCE A. PACARRO  
*June 7, 2002 - June 6, 2008*

BARBARA P. RICHARDSON  
*May 5, 2000 - May 4, 2006*

TENNEY Z. TONGG  
*Retired March 15, 2002*

FA'AUUGA TO'OTO'O  
*December 9, 2000 - December 8, 2006*

#### **SECOND JUDICIAL CIRCUIT**

REINETTE W. COOPER  
*May 7, 2001 - May 6, 2007*

DOUGLAS H. IGE  
DEPUTY CHIEF JUDGE  
*June 28, 2002 - June 27, 2008*

RHONDA I. L. LOO  
*May 1, 1997 - April 30, 2003*

#### **THIRD JUDICIAL CIRCUIT**

JEFFREY CHOI  
DEPUTY CHIEF JUDGE  
*Retired October 31, 2002*

JOSEPH P. FLORENDO, JR.  
*November 3, 1998 - November 2, 2004*

SANDRA E. P. SCHUTTE  
*June 2, 1997 - June 1, 2003*

#### **FIFTH JUDICIAL CIRCUIT**

CALVIN K. MURASHIGE  
DEPUTY CHIEF JUDGE  
*June 25, 1999 - June 24, 2005*

TRUDY K. SENDA  
*May 4, 2001 - May 3, 2007*

*Per Diem Judges*

**FIRST JUDICIAL CIRCUIT**

John Campbell, Jr.  
William A. Cardwell  
Marilyn Carlsmith  
Valerie W.H. Chang  
Gale L.F. Ching  
Lawrence R. Cohen  
James H. Dannenberg  
Paula Devens-Matayoshi  
Philip Doi  
Peter V.N. Esser  
Peter C.K. Fong  
Christine E. Kuriyama  
Lenore K.J.H. Lee  
Lono J. Lee  
Wilson M.N. Loo  
Michael A. Marr  
Richard A. Marshall  
Patricia Ann McManaman  
William J. Nagle III  
Katharine M. Nohr  
Lillian Ramirez-Uy  
Nancy Ryan  
Yvonne R. Shinmura  
Peter T. Stone  
Clyde E. Sumida  
Matthew J. Viola  
William K. Wallace, III  
Timothy David Woo, Jr.  
Gregg Young

**SECOND JUDICIAL CIRCUIT**

Jan K. Apo  
Ruby A. Hamili  
Paul L. Horikawa  
Mary Blaine Johnston  
Barclay E. MacDonald  
Jack R. Naiditch  
Anthony L. Ranken  
Douglas J. Sameshima

**THIRD JUDICIAL CIRCUIT**

Karen Napua Brown  
William S. Chillingworth  
Victor M. Cox  
Colin L. Love  
Matthew S.K. Pyun, Jr.  
Shawn Maile Nakoa  
John P. Moran  
Elizabeth Ann Strance  
Barbara T. Takase  
George S. Yuda

**FIFTH JUDICIAL CIRCUIT**

Max W.J. Graham, Jr.  
Walton D.Y. Hong  
Joseph N. Kobayashi  
Gerald S. Matsunaga  
Frank D. Rothschild

## Support Services

### STRATEGIC MISSION

The mission of the Office of the Administrative Director of the Courts is to promote the administration of justice in Hawai'i by providing professional, responsive administrative support to the Chief Justice, the courts and Judiciary programs and to expedite, facilitate and enhance the mission of the Judiciary.

### ADMINISTRATION

The Office of the Administrative Director of the Courts has the primary responsibility for the daily operations of the court system. The Administrative Director is appointed by the Chief Justice with the approval of the Supreme Court, and is assisted by the Deputy Administrative Director.

The Administrative Director also has the responsibility of coordinating the Judiciary's annual presentations to the Legislature, both for the Judiciary budget and for changes in laws relating to the operation of the judicial system.

Administrative programs are divided into three divisions: the Intergovernmental and Community Relations Division, the Support Services Division, and the Policy and Planning Division. Programs that fall under the three divisions include: Affirmative Action/EEO, Budget and Statistics, Fiscal and Support Services, Equality and Access to the Courts, Internal Audit, Judicial Education and Resource Development, Personnel, Planning and Evaluation, Public Affairs, Staff Attorneys, Telecommunication and Information Services, and Volunteers in Public Service to the Courts. Other program components which carry statewide operational responsibilities are the Administrative Driver License Revocation Office, Center for Alternative Dispute Resolution, Children's Justice Centers, King Kamehameha V - Judiciary History Center, Law Library, Office of the Public Guardian, Records Management, and Special Projects/Legislative Office.

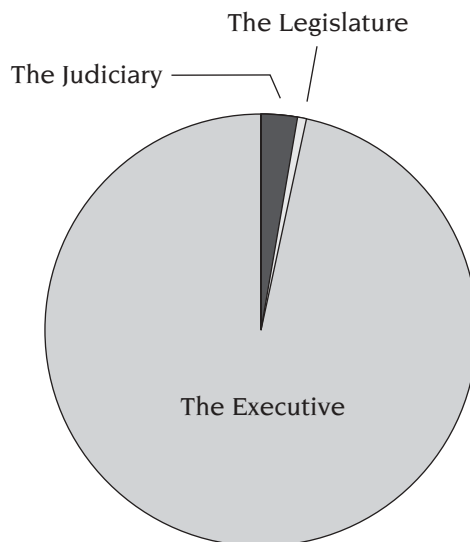
## *Financial Resources*

Appropriations for the Hawai‘i State Judiciary are made by the Legislature on a statewide basis, with each fiscal year beginning July 1 and ending June 30. Both the operating and capital improvements budgets of the Judiciary are legislatively determined each biennium with operating monies allocated from the State General and Special Funds and capital improvement monies from the State Capital Project Fund.

Combined, the State General and the Capital Project Funds represent over 96 percent of the funding source of all Judiciary expenditures. The Legislature appropriated \$105,641,716 from the State General Fund for operations during the current fiscal year, and \$14,314,000 to the Judiciary from the State Capital Project Fund. Other operating monies come from federal funds, trust funds, and special revenue funds such as the Driver Education and Training Fund.

Financial Resources

THE JUDICIARY OPERATING FUNDS FISCAL YEARS 2002-2005 BUDGET SUMMARY				
PROGRAM	FY 2002	FY 2003	Biennium Budget Request	
	Actual Expenditures	Appropriations	FY 2004	FY 2005
JUD 101 - COURTS OF APPEAL				
General Fund	5,284,856	5,117,608	5,874,885	5,816,875
Revolving Fund	30,891	243,261	243,261	243,261
JUD 310 - FIRST JUDICIAL CIRCUIT				
General Fund	54,125,351	55,985,031	56,753,672	56,790,302
Special Fund	1,953,665	3,274,737	3,112,683	3,112,683
JUD 320 - SECOND JUDICIAL CIRCUIT				
General Fund	11,031,009	11,428,602	11,811,606	12,167,696
JUD 330 - THIRD JUDICIAL CIRCUIT				
General Fund	12,746,959	13,602,441	14,015,296	14,410,260
JUD 350 - FIFTH JUDICIAL CIRCUIT				
General Fund	3,902,408	4,794,217	4,828,366	5,215,422
JUD 601 - ADMINISTRATION				
General Fund	18,255,681	18,553,952	24,674,210	24,900,680
Special Fund	1,387,743	3,568,207	6,430,261	6,430,261
TOTALS				
General Fund	105,346,264	109,481,851	117,958,035	119,301,235
Special Fund	3,341,408	6,842,944	9,542,944	9,542,944
Revolving Fund	30,891	243,261	243,261	243,261



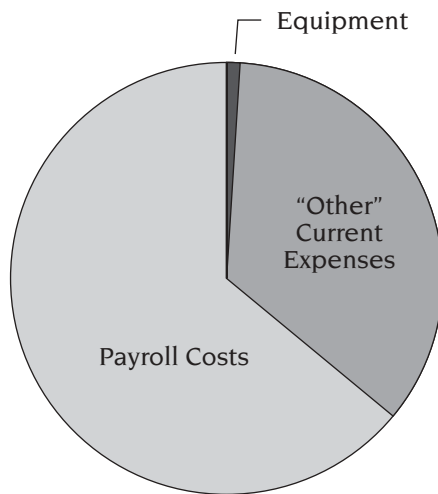
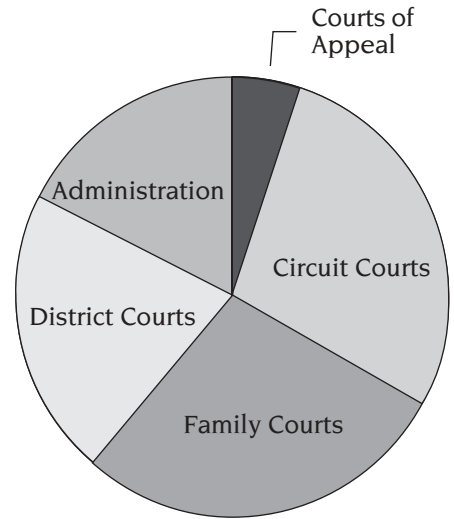
TOTAL STATE GOVERNMENT APPROPRIATIONS FROM STATE GENERAL FUND FISCAL YEAR 2001-02

The Judiciary	2.82%	\$ 105,641,716
The Legislature	.61%	23,024,917
The Executive	96.57%	3,624,272,568
<b>Total</b>		<b>\$ 3,752,939,201</b>

*Financial Resources*

STATE GENERAL FUND EXPENDITURES  
BY COURT ELEMENT  
FISCAL YEAR 2001-02

Courts of Appeal	5.0%	\$ 5.3 million
Circuit Courts	28.7%	30.3 million
Family Courts	29.2%	30.8 million
District Courts	19.8%	20.9 million
Administration	17.3%	18.3 million
<hr/>		
Total		\$ 105.6 million



STATE GENERAL FUND EXPENDITURES  
BY COST CATEGORY  
FISCAL YEAR 2001-02

Equipment	1%	\$ 1.3 million
"Other" Current Expenses	33%	34.6 million
Payroll Costs	66%	69.7 million
<hr/>		
Total		\$ 105.6 million

## List of Available Judiciary Publications

IF YOU ARE INTERESTED IN THE FOLLOWING PUBLICATIONS, PLEASE CONTACT:

The Judiciary Public Affairs Office  
Ali'iōlani Hale  
417 South King Street  
Room 206-C  
Honolulu, Hawai'i 96813  
  
Internet site: [www.courts.state.hi.us](http://www.courts.state.hi.us)

### PUBLICATIONS

Are You Interested in Being a Court Interpreter?  
Attorney-Client Relations Program  
Being 18-Local Style  
Center for Alternative Dispute Resolution  
Children and Divorce  
Children's Justice Center of O'ahu  
Commission on Judicial Conduct  
Community Mediation  
Community Service Sentencing Branch  
Court Orientation Tours  
Disciplinary Complaints Against Lawyers  
Going to Small Claims Court? What Do You Know About Mediation?  
Going to Probate Court? What Do You Know About Mediation?  
Judiciary History Center  
Lawline  
Lawyer Referral Information Service  
Selecting a Mediator  
Speakers Bureau Program  
The Judiciary State of Hawai'i 2002 Annual Report  
The Judiciary State of Hawai'i 2002 Statistical Supplement  
The Judiciary Welcomes Volunteers  
Your Guide to Small Claims Court  
Your Guide to Regular Claims Court

### VIDEOS

*An Informational Video on Deferred Acceptance of Guilty (DAG)/  
Deferred Acceptance of No Contest (DANC) Plea (TRT 18:00)*  
*Broken Scales: Justice Under Influence (TRT 18:17)*  
*Informational Video on Small Claims (TRT 16:18)*  
*Informational Video on Traffic Violations (TRT 15:15)*  
*Jury Orientation Video (TRT 18:25)*  
*Mediation: An Alternative to Court (TRT: 18:00)*  
*The Purple Family: Divorce Education Video (TRT 23:52)*