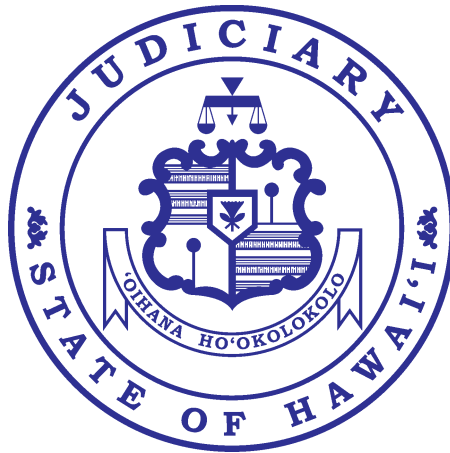


---

# The Judiciary State of Hawai‘i



2004 Annual Report

---

*The mission of the Judiciary,  
as an independent branch of  
government, is to administer  
justice in an impartial, efficient,  
and accessible manner in  
accordance with the law.*

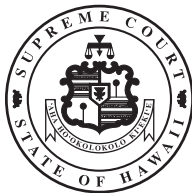
I am pleased to present our 2004 Annual Report that details the work of the Judiciary during the past year. As an independent branch of government, the Judiciary's role is to administer justice in an impartial manner, free from outside influences.

This report reflects the dedication of the men and women who work in the court system. Each day, these employees strive to do their best to fulfill our mission, all the while knowing that what they do may have far-reaching impacts upon people's lives. I am proud of the work of our employees and extend my heartfelt thanks and appreciation to them. I also thank another valuable part of our Judiciary family—the many volunteers who unselfishly give of their time and talent to serve the people of Hawai'i.

On behalf of the Judiciary, I extend our sincere appreciation to the Legislature for its continued support of our budgetary needs and legislative initiatives. I also extend warmest *aloha* to Governor Lingle, her cabinet, and members of the Legislature. We pledge our continuing commitment to working with you to build a dynamic and progressive judicial system. Our mutual quest for excellence depends on our cooperative and collaborative efforts.



Ronald T. Y. Moon  
Chief Justice  
Hawai'i Supreme Court





# *Table of Contents*

MONTH-BY-MONTH HIGHLIGHTS	1
STRUCTURE OF THE JUDICIARY	
Court System	7
Administrative System	8
NEW JUDICIAL APPOINTMENTS	9
COURTS OF APPEAL	11
Supreme Court	14
Intermediate Court of Appeals	16
Land Court	18
Tax Appeal Court	18
TRIAL COURTS	19
Circuit Courts	20
Family Courts	24
District Courts	27
Per Diem Judges	30
SUPPORT SERVICES	31
FINANCIAL RESOURCES	32

## Month-By-Month Highlights

### JANUARY

#### *Chief Justice Speaks on “Openness in the Courts”*

Chief Justice Ronald Moon addressed the Honolulu Community Media Council on the topic of “transparency” at a luncheon at the Plaza Club on January 27. The speech focused on the recommendations stemming from a “transparency” conference held in November 2003. The conference addressed three issues: 1) judges making public statements within the parameters of the Judicial Canons, 2) confidentiality of court records, and 3) openness of court proceedings.

Chief Justice Moon called on the bench, bar and media to work together to provide the public with fair and accurate information about the courts and judicial proceedings.

#### *Twenty-Six State Judges Evaluated on Courtroom Performance*

Summary evaluation results of 26 Hawai‘i state judges were made public in the ninth Judicial Performance Program report.

The Circuit Court judges had mean scores of 4.1 in the Legal Ability section, 4.2; for Judicial Management Skills, 4.2; for Comportment, and 4.1 in the Settlement and/or Plea Agreement Ability section. Scores were based on a scale of possible responses ranging from one, for Poor, to five, for Excellent.

The average score for the Family Court judges in the Legal Ability section was 4.2. The Family Court mean score in the Judicial Management Skills section was 4.2; the mean score for Comportment was also 4.2; and the mean for Settlement and/or Plea Agreement Ability was 4.1. As in Circuit Court, these scores were based on a one to five scale.

For District Court judges, the average score for the Legal Ability section was 4.2, the average score for the Settlement and/or Plea Agreement Ability section was 4.1, and the Judicial Management Skills section averaged 4.2. In these three sections, District Court judges could receive scores ranging from one to five, just as Circuit Court and Family Court judges.

#### *History Center Programs Examine Historical Massie Trials*

The King Kamehameha V Judiciary History Center, Kumu Kahua Theatre, and the University of Hawai‘i’s Center for Biographical Research hosted two free public events that examined the impact of the Massie/Kahahawai trials of the early 1930s.

The first event, held on January 13, focused on the significance of the case where five local men were tried for the alleged assault and gang rape of a navy wife, Thalia Massie. The second event, held on January 20, highlighted the Massie/Fortescue murder case. In that case, Massie’s husband, her mother, and two naval enlisted men were tried for the murder of Joseph Kahahawai — one of the defendants in the assault trial. Both performances were held in Ali‘iolani Hale — the very building where the original trials took place.



*Local actors perform scenes from the Massie/Kahahawai drama.*

## Month-By-Month Highlights

### *Documentary Sparks Community Discussion on Child Abuse*

The Children's Justice Center (CJC) organized a special screening of a documentary called "Capturing the Freidmans" on January 16.

Various law enforcement agencies and social services groups watched the film at the Wallace Theaters at Restaurant Row.

The non-fiction feature film, winner of the Grand Jury Documentary Prize at the Sundance Film Festival, is a disturbing tale of a family's problems during a highly publicized child sex abuse case.

A panel featuring Judge Marie Milks, CJC Director Judy Lind, law enforcement, and social services representatives discussed the controversial issue with the audience following the screening.



Panel members, including Judge Marie Milks and Children's Justice Center Director Judy Lind, address the audience on child abuse issues.

### **FEBRUARY**

#### *Judicial Pretrial Assistant Program Revived*

In February, the Family Court on O'ahu revived the Judicial Pretrial Assistant Program. The program uses alternative dispute resolution techniques to bring

families, social workers, attorneys, and other professionals together to work toward the safe reunification of children and families, and other timely permanent solutions.

The program assists parties involved in abuse and neglect cases reach agreement on what is in the best interest of the child. All agreements made in conference must be approved by the court and incorporated into a court order.

### **MARCH**

#### *Family Court Initiates Volunteer Settlement Master Procedures*

In March, the Family Court of the First Judicial Circuit announced plans to begin referring contested divorce cases to Volunteer Settlement Masters (VSM). VSMs help parties reach settlement and are

licensed family law attorneys. After the meeting with the parties and their attorneys, the VSM submits a report to the court explaining whether the parties reached an agreement. If a settlement is reached, the parties and counsel may immediately contact the Family Court to schedule the case for a hearing and put the agreement on the record.

### **APRIL**

#### *Nakamura Sworn In*

Craig H. Nakamura was sworn in as an associate judge on the Intermediate Court of Appeals on April 8.

#### *Border Sworn In*

Patrick W. Border was sworn in as Circuit Court Judge of the First Judicial Circuit on April 8. Judge Border filled the vacancy created by the retirement of Judge Marie N. Milks.

## Month-By-Month Highlights

### *New Electronic Benchbook for First Circuit Criminal Division*

In April, First Circuit Criminal Division judges began using the new electronic benchbook, which provides instant access to a wealth of information while in the courtroom. Retired Judge Gail Nakatani served as legal consultant for the project.

Previously, judges had no mechanism for sharing information with other judges and had no standard uniform checklists, scripts, or colloquies to use during criminal proceedings.

The benchbook, as well as laptops and necessary computer equipment for all participants, were funded by a federal grant from the Department of Justice.



*First Circuit Criminal Division Judges learn how to use the new electronic benchbook.*

### **May**

#### *Cardwell Sworn In*

William A. Cardwell was sworn in as District Court Judge of the First Judicial Circuit on May 20. Judge Cardwell filled the vacancy created when Judge Rhonda Nishimura was appointed to the Circuit Court.

#### *Kuriyama Sworn In*

Christine E. Kuriyama was sworn in as District Family Court Judge of the First Judicial Circuit on May 20. Judge Kuriyama filled the vacancy created by the retirement of Judge Darryl Choy.

#### *Polak Sworn In*

Simone C. Polak was sworn in as District Court Judge of the Second Judicial Circuit on May 28. Judge Polak filled the vacancy created by the retirement of Judge Eric G. Romanchak.

#### *Takase Sworn In*

Barbara T. Takase was sworn in as District Court Judge of the Third Judicial Circuit on May 26. Judge Takase filled the vacancy created by the retirement of Judge Sandra P. Schutte.

#### *Law Day Activities Help Community Learn about the Courts*

The public had a unique opportunity to meet Chief Justice Ronald Moon, Justice Steven Levinson, Chief Judge Ronald Ibarra, and judges Greg Nakamura, Terrence Yoshioka, Joseph Florendo, Matthew Pyun, Aley Auna, and Ben Gaddis at two special events in Hilo and Kona on May 4.

The guest justices and judges spoke about their respective courts, the jurisdiction of the courts, and the court's function within the Judiciary.

The speakers offered tips to people who may appear in court, and answered questions from the audience.

The events were held to commemorate Law Day. Law Day is a national event held each year in May to increase public awareness about the American heritage of liberty under the law.

## Month-By-Month Highlights

### *New Guidelines of Professionalism for Judges and Lawyers Issued.*

Consistent with the goals of the National Action Plan on Lawyer Conduct and Professionalism (NAP), the Hawai'i Supreme Court issued an order adopting principles of professionalism for Hawai'i judges and the Hawai'i State Bar Association's guidelines of professional courtesy and civility for Hawai'i lawyers. The order is posted in its entirety under the "Rules" category on the Judiciary's website at [www.courts.state.hi.us](http://www.courts.state.hi.us).

### **JUNE**

#### *Ayabe Sworn In*

Governor Linda Lingle named Bert I. Ayabe to the Circuit Court of the First Judicial Circuit to fill the vacancy created by the retirement of Judge Dan Kochi. Judge Ayabe was sworn in on June 10.

#### *Fujise Sworn In*

Alexa D. M. Fujise was sworn in as an associate judge on the Intermediate Court of Appeals on June 10.

#### *Hara Sworn In*

Glenn Shoichi Hara was appointed by Governor Lingle to the Circuit Court of the Third Judicial Circuit in Hilo. Judge Hara was sworn in on June 25.

### **JULY**

#### *Credit and Debit Cards Accepted*

Court users gained the added convenience of making court payments with a credit or debit card. Act 71, which became effective on July 1, allows payments or bail postings by credit or debit cards. The new law authorizes the Judiciary to charge a small convenience fee for payments made through credit or debit cards, and pass the cost to the user.

### *Judiciary Offers Assistance to Individuals Involved in Paternity Disputes*

In July, the Family Court of the First Judicial Circuit launched a mandatory informational program for individuals dealing with custody and visitation disputes in paternity cases.

The Kids First Morning Program involves cases where paternity has been established and the unmarried parents are disputing custody or visitation rights. Program attendance is limited to the biological or adjudicated parents. New partners or spouses and extended family members may not attend.

The program teaches parents how to minimize the negative effects of separation on their children. Parents receive information on mediation, counseling and treatment programs, and child development, which helps them make decisions in the best interest of their children.

The Kids First Morning Program is based on the O'ahu Family Courts original Kids First Evening Program. Divorcing parents with minor children still attend the evening program.

### **SEPTEMBER**

#### *New Chief Court Administrator for O'ahu*

Chief Justice Ronald Moon appointed William A. Santos as the new Chief Court Administrator for the First Judicial Circuit. He assumed the position on January 3, 2005 when the former administrator, Kenneth Ling, retired. Mr. Santos served as deputy chief court administrator since April 2001. He began his career with the state court system in 1976 as a Family Court probation officer.

The chief court administrator is responsible for the administrative functions required to support all of the civil, criminal, family and probation matters handled in the First Judicial Circuit, which include managing budgetary, fiscal, and personnel matters for 1,100 judges and employees in the circuit.



## Month-By-Month Highlights

### OCTOBER

#### *Jurist of the Year Award*

Colleen Hirai, Chief Judge of the First Judicial Circuit, was awarded the Judiciary's second annual "Jurist of the Year" award. The award was presented during the Employee Incentive Awards Ceremony on October 29 in the Supreme Court Courtroom.

As Chief Judge for the First Judicial Circuit, Judge Hirai has provided the leadership and support that has helped the circuit move ahead in its restructuring effort in accordance with the Achieving Court Excellence project.

During the ceremony, Chief Justice Moon also presented individual and group awards to employees who made outstanding contributions to the state court system.



Judge Colleen Hirai

### NOVEMBER

#### *Family Drug Court Award*

The Family Drug Court received the Mediation Center of the Pacific's "Natural Collaborative Leaders" award on November 5 at the Kahala Mandarin Hotel. Marcy Brown, Family Drug Court Director, says the award recognizes "our team's ability to work together to solve problems and be good listeners."

#### *Alternative Dispute Resolution Month*

November was Alternative Dispute Resolution (ADR) month in Hawai'i. Events were held throughout the month to highlight the many ways mediation is used to resolve disputes. Activities included free public forums, television appearances highlighting the many ways disputes are resolved outside of the courtroom, conflict resolution trainings, and an awards banquet for problem-solvers in the business community.



Mayor Jeremy Harris signed a proclamation on October 29 declaring November 2004 as Alternative Dispute Resolution Month.

## Month-By-Month Highlights

### *Kaua'i Drug Court's First Graduates*

The Kaua'i Drug Court held its first Adult Drug Court graduation on November 16. The first graduating class consisted of three individuals who successfully completed the one-year minimum, high intensity supervision and treatment program..



*Kaua'i Drug Court graduation ceremony, (left to right) Judge Clifford Nakea, Cherrie Manoi, Shawn Cremer and William Coller.*

### *Judicial Independence Conference*

The League of Women Voters of Hawai'i and its partners held a conference on judicial independence on November 13 at the Hilton Hawaiian Village. Local and national experts participated in panel discussions and an open forum. University of Hawai'i Law School Dean Aviam Soifer moderated the program, which included three panels: 1) How do Judicial Selection and Retention affect Judicial Independence? 2) Do limitations by the Executive and Legislative Branches on Judicial Authority affect Judicial Independence? and 3) How does the nature of media coverage affect Judicial Independence and public attitudes?

## **DECEMBER**

### *Law School for Legislators*

The Judiciary and the University of Hawai'i School of Law co-sponsored a "Law School for Legislators" program held at the Hawai'i Supreme Court on December 20. UH law school professors Jon Van Dyke, Hazel Beh, and Casey Jarman were the guest speakers.

The program focused on three main topics: 1) The United States and Hawai'i Constitutions: The relationship between them, the constitutional provisions for and limitations on legislative authority, 2) The Common Law and the role of the courts in its development, application, and interpretation: The effect of legislation on common law development, and 3) Statutory Drafting and Interpretation: How courts determine legislative intent.

### *Lawyer as Problem Solver Award*

The Mediation Center of the Pacific recognized Elizabeth Kent, Director of the Judiciary's Center for Alternative Dispute Resolution, with the "Lawyer as a Problem Solver Award" at its annual meeting at the Pacific Club on December 1. The award is given to a member of the legal profession who has exhibited extraordinary skills in either promoting the concept of lawyer as problem solver or resolving individual, institutional, community, state, national or international problems. Recipients are acknowledged for their use or promotion of collaboration, negotiation, mediation, counseling, decision making, and problem solving skills to help parties resolve a problem in a creative and novel way.

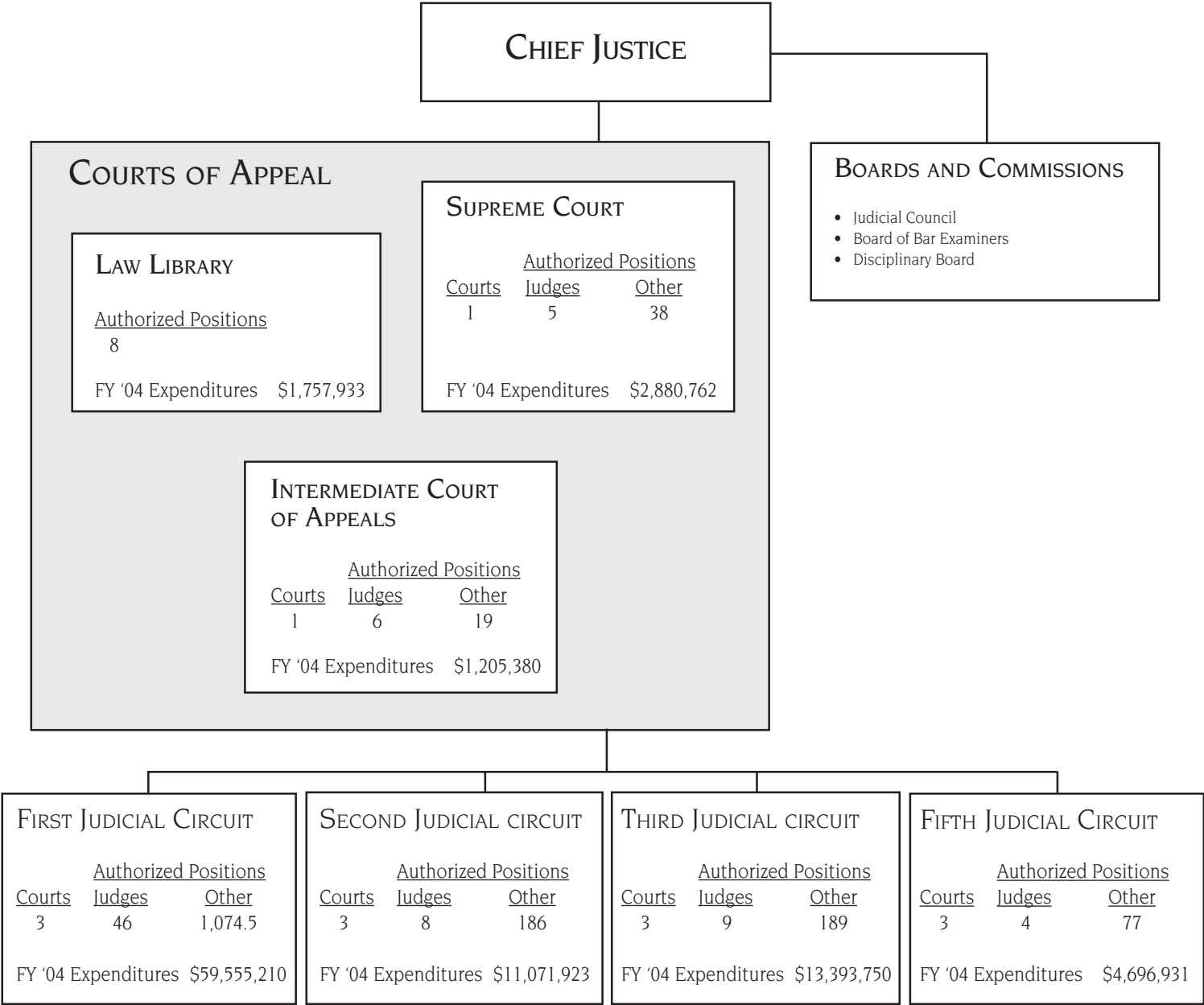


**Elizabeth Kent**

### *Conch Shell Award*

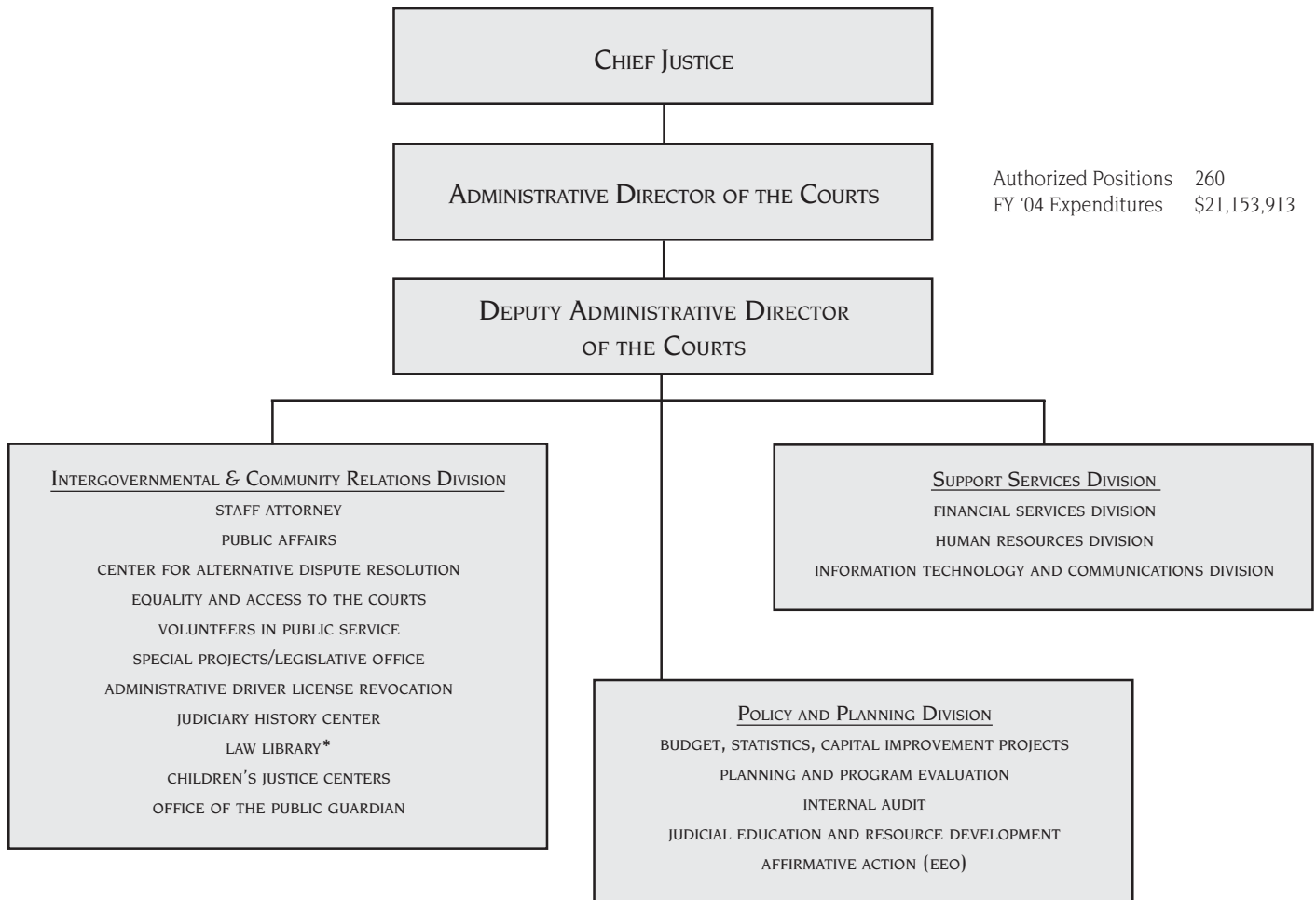
The Judiciary's Public Affairs Office was awarded the Conch Shell Award by the Mediation Center of the Pacific for their extraordinary efforts in promoting ADR month in November.

# Structure of the Court System



\*Funding and positions assigned to First Judicial Circuit.

# Structure of the Office of the Administrative Director of the Courts



\* Funding reflected under Courts of Appeal

## New Judicial Appointments



Judge Bert I. Ayabe  
June 10, 2004 – June 9, 2014

### Judge Bert I. Ayabe

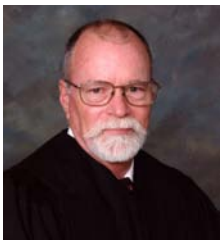
Governor Linda Lingle picked Bert I. Ayabe to replace First Circuit Judge Dan Kochi who retired from the bench on December 31, 2003. Judge Ayabe had been a district judge since June 2003. Prior to that, he had a private practice specializing in personal injury and commercial litigation, as well as arbitration and mediation. Judge Ayabe also was a partner with Hisaka Furusho Ayabe and Goto, and served as an associate attorney with the law firms of Kim Sterns Lines and Moore, Bollington Stilz and Bloeser, and Kobayashi Watanabe Sugita and Kawashima. He is a graduate of the University of Hawai'i and Hastings College of Law in San Francisco.



Judge Patrick W. Border  
April 8, 2004 – April 7, 2014

### Judge Patrick W. Border

On April 8, 2004, Judge Patrick William Border filled the seat vacated by First Circuit Judge Marie N. Milks, who retired on March 15, 2004. Judge Border had been with the law firm of Cronin Fried Kekina and Fairbanks since 1984. He also served as a mediator and arbitrator for parties involved in divorce, real estate transactions, civil rights claims and lawsuits, as well as various business disputes. Judge Border previously served as a deputy corporation counsel for the City and County of Honolulu (1982-1984), a deputy attorney general for the State of Hawai'i (1980-1982), and Honolulu deputy prosecuting attorney (1979-1980). He also served as judge advocate for the U.S. Air Force (1973-1978). He earned his law degree from the University of Nebraska.



Judge William A. Cardwell  
May 20, 2004 – May 19, 2010

### Judge William A. Cardwell

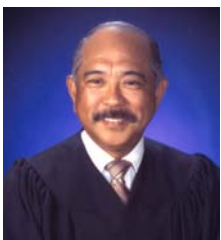
Chief Justice Ronald T.Y. Moon appointed William A. Cardwell as a judge of the District Court of the First Judicial Circuit. Judge Cardwell filled the vacancy created when Judge Rhonda Nishimura was appointed to the Circuit Court. Judge Cardwell served as a per diem District Court judge on O'ahu. He was previously a partner for Cades Schutte Fleming and Wright from 1982-2001 and formerly of counsel to the firm. Judge Cardwell received his law degree from the University of California, Berkeley, in 1974.



Associate Judge  
Alexa D.M. Fujise  
June 10, 2004 – June 9, 2014

### Associate Judge Alexa D.M. Fujise

Alexa D.M. Fujise was sworn in as an associate judge on the Intermediate Court of Appeals on June 10, 2004. Judge Fujise had been with the City and County of Honolulu's Department of the Prosecuting Attorney since 1984, where she served as the director of the Research and Reference Support Division. Throughout her 20-year tenure with the department, Judge Fujise also served as appellate research branch chief and deputy prosecuting attorney. Previously, she worked as assistant disciplinary counsel for the Office of Disciplinary Counsel. She earned her law degree from the University of Hawai'i.



Judge Glenn S. Hara  
June 25, 2004 – June 24, 2014

### Judge Glenn S. Hara

Glenn Shoichi Hara was appointed by Governor Lingle to the Circuit Court of the Third Judicial Circuit in Hilo. Judge Hara was a partner with the Big Island law firm of Roehrig Roehrig Wilson & Hara. He practiced law in the areas of real estate and commercial counseling and litigation, wills, trusts and probate, and has represented clients in contract, criminal and civil cases. From 1982 to 1987, Judge Hara served as a per diem District Court judge. Judge Hara earned his law degree from Stanford University.



## *New Judicial Appointments*

### **Judge Christine E. Kuriyama**

Christine E. Kuriyama was sworn in as a District Family Court judge of the First Judicial Circuit by Chief Justice Moon on May 20, 2004. She filled the vacancy created by the retirement of Judge Darryl Choy. Judge Kuriyama served as a per diem District Family Court judge on O'ahu from 1995-2004. Previously, she worked as a sole practitioner specializing in civil litigation. She was also a partner with Fukunaga, Matayoshi, Hershey, Kuriyama and Ching from 1992-1994. Judge Kuriyama graduated from Hastings College of law in 1978.



Judge Christine E.  
Kuriyama  
May 20, 2004 – May 19, 2010

### **Associate Judge Craig H. Nakamura**

Craig H. Nakamura was sworn in as an associate judge on the Intermediate Court of Appeals on April 8, 2004. Judge Nakamura served as an Assistant U.S. Attorney since 1986, where he focused on prosecution of federal crimes with an emphasis on complex legal schemes, tax offenses, environmental crimes and public corruption. He previously was an associate with the law firm of Goodsell Anderson Quinn and Stifel and served as adjunct professor in Appellate Advocacy with the William S. Richardson School of law. Judge Nakamura is a graduate of Harvard Law School.



Associate Judge  
Craig H. Nakamura  
April 8, 2004 – April 7, 2014

### **Judge Simone C. Polak**

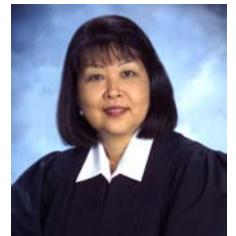
Simone C. Polak was sworn in on May 28, 2004 as a judge of the District Court of the Second Judicial Circuit to fill the vacancy created by the retirement of Judge Eric G. Romanchak. Previously, Judge Polak served as a Deputy Prosecuting Attorney with the Department of the Prosecuting Attorney on Maui for 15 years. She also worked as a legislative law clerk for Kronick, Moskovitz, Tiedman and Girard in California. Judge Polak received her law degree from McGeorge School of Law.



Judge Simone C. Polak  
May 28, 2004 – May 27, 2010

### **Judge Barbara T. Takase**

Chief Justice Moon appointed Barbara T. Takase as a judge of the District Court of the Third Judicial Circuit to fill the vacancy created by the retirement of Judge Sandra P. Schutte. Judge Takase was previously employed in private practice, specializing in the areas of real property, wills and trust, and business law. Since 1999, she also served as a per diem judge in the District and Family Courts on the Big Island. Subsequent to receiving her law degree from the William S. Richardson School of law in 1989, Judge Takase served as a deputy prosecuting attorney for nine years and served as a hearings officer with the Department of Education.



Judge Barbara T. Takase  
May 26, 2004 – May 25, 2010

## *Courts of Appeal*

The Judiciary's appellate level is composed of the Supreme Court and the Intermediate Court of Appeals (ICA). The Courts of Appeal hear appeals from all trial courts and specific state boards and agencies.

Generally, cases assigned to the Supreme Court involve the formulation and development of the law, while cases assigned to the ICA involve possible trial court error or the application of settled law. An ICA decision may be reviewed by the Supreme Court upon request by any party, though the Supreme Court may exercise its discretion in accepting the matter.

Members of the Supreme Court and ICA are appointed to an initial ten-year term by the Governor. The Governor selects appointees from a list of not less than four and not more than six names submitted by the Judicial Selection Commission. All appointments must be confirmed by the State Senate.

To be considered for appointment, a person must be a resident and a citizen of the State and of the United States and licensed to practice law by the Supreme Court of Hawai'i for not less than ten years preceding their nomination. Justices and judges may be retained by the Judicial Selection Commission, but must retire at age 70.

## Courts of Appeal

### ACTIONS FILED

There were 736 primary cases filed in the Courts of Appeal during the 2003-04 fiscal year – 662 appeals and 74 original proceedings.

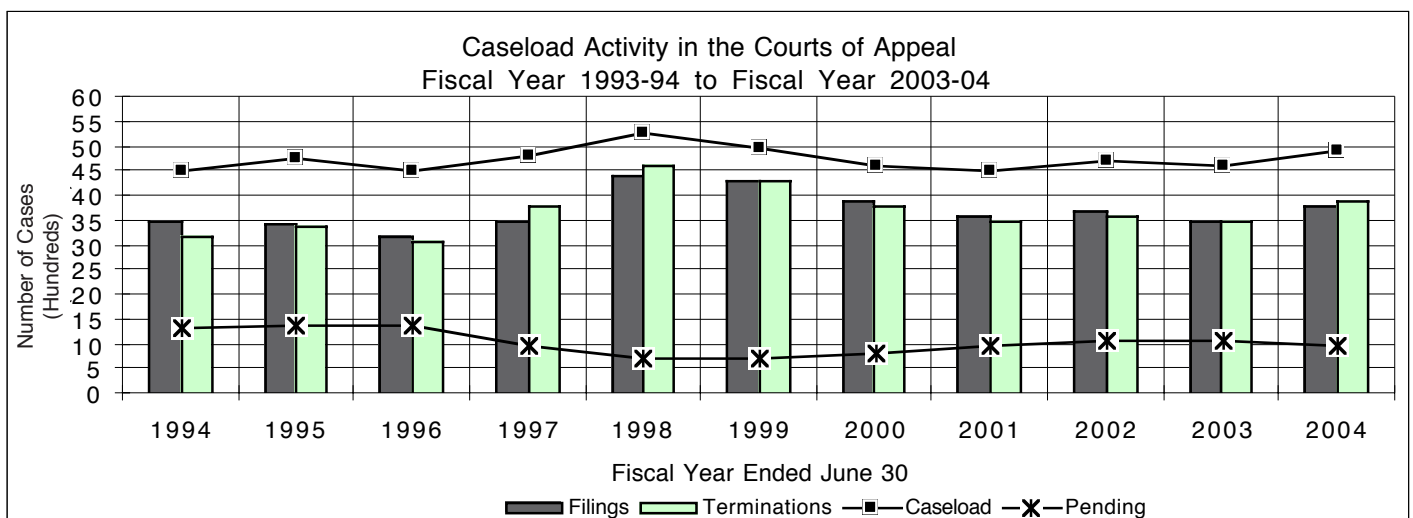
Supplemental proceedings, which arise out of primary cases, are comprised of motions, special stipulations, and applications for certiorari. In fiscal year 2003-04, 3,107 supplemental proceedings were filed in the Courts of Appeal.

### STATUS OF PENDING CASES

There were 972 primary cases and 52 supplemental proceedings pending in the Courts of Appeal at the end of the fiscal year. Of the 1,024 pending cases, 58% were being briefed, 37% were ready to be scheduled for hearing or, in the case of supplemental proceedings, ready and awaiting decision without further hearing, and 5% had been taken under advisement and were awaiting decision.

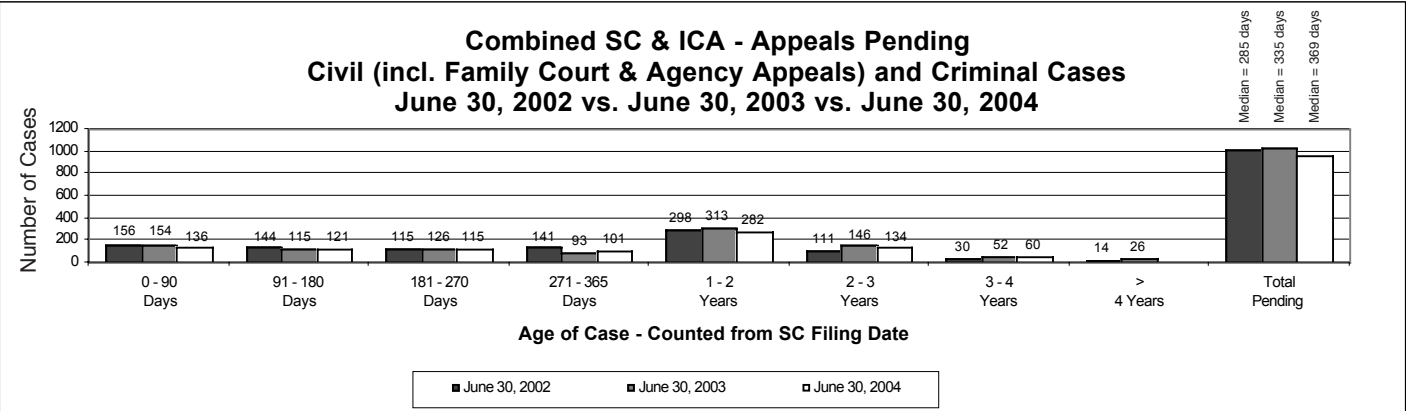
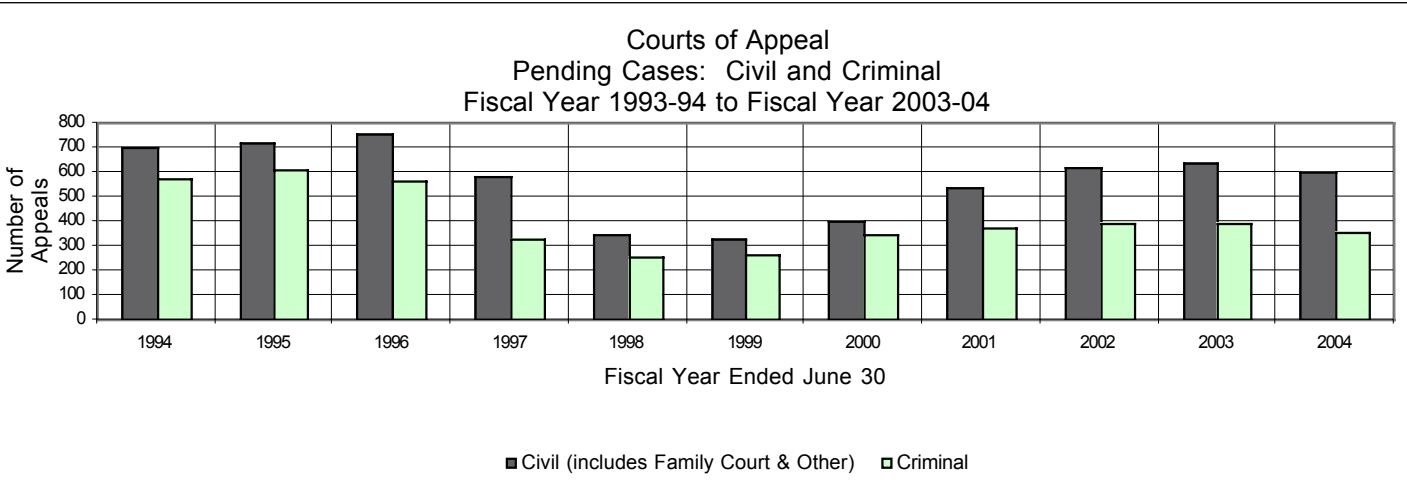
### TERMINATIONS

The Courts of Appeal terminated 814 primary cases during fiscal year 2003-04 compared to 703 primary cases terminated during the previous fiscal year. Terminations of supplemental proceedings increased from 2,743 last year to 3,106 this year.





Courts of  
Appeal



## Supreme Court

### STRATEGIC MISSION

The mission of the Supreme Court is to provide timely disposition of cases, including resolution of particular disputes and explication of applicable law; license and discipline attorneys; discipline judges; and make rules of procedure for all Hawai'i courts.

### COURT DESCRIPTION

The Supreme Court is the State's highest court. Its decisions are binding on all other Hawai'i courts.

In Hawai'i, the primary mission of the Supreme Court is to review decisions of the lower courts in which appeals have been allowed. Cases that are reviewed by appeal have been initiated in either a trial court or an agency. The Supreme Court has original jurisdiction in proceedings for extraordinary relief in the nature of mandamus, certiorari, and prohibition, and in habeas corpus proceedings.

Each appeal is decided on the basis of the written record. In some cases, the court may hear oral arguments. The court takes no evidence, except in original proceedings. All five justices hear each case.

The members of the Supreme Court are Chief Justice Ronald T.Y. Moon, and Associate Justices Steven H. Levinson, Paula A. Nakayama, Simeon R. Acoba, Jr., and James E. Duffy, Jr.

Members of the Supreme Court are appointed to an initial ten-year term by the Governor. The Governor selects appointees from a list of not less than four and not more than six names submitted by the Judicial

Selection Commission. All appointments must be confirmed by the State Senate. To be considered for appointment, a person must be a resident and a citizen of the State and of the United States and licensed to practice law by the Supreme Court of Hawai'i for not less than ten years preceding their nomination. Justices may be retained by the Judicial Selection Commission, but must retire by age 70.

In addition to its appellate functions, the Supreme Court is also responsible for formulating court rules, licensing and disciplining attorneys, and determining judicial fitness.

Chief Justice Moon and the Supreme Court are assisted by committees of lawyers and non-lawyers and by staff. The Judicial Council, a citizen's group, provides advice about the administration of justice. The Board of Examiners examines the qualifications of those seeking to practice law in the State.

The Commission on Judicial Conduct reviews complaints against judges and recommends discipline to the Supreme Court. The Office of Disciplinary Counsel investigates complaints against lawyers and recommends appropriate discipline to the Supreme Court.

The Supreme Court Staff Attorney heads a staff of four attorneys who assist the Supreme Court in the processing of its work.

In Hawai'i, the Chief Justice is responsible for the administration of all courts in the State and appoints an administrative director of the courts to manage the non-judicial aspects of the Judiciary.

## Supreme Court

### ACTIONS FILED

During fiscal year 2003-04, 736 primary cases were filed in the Supreme Court. There were also 2,927 supplemental proceedings filed before the Supreme Court.

### TERMINATIONS

Terminations of primary cases increased from last fiscal year — 710 cases to 880. These included 296 cases which were assigned to the Intermediate Court of Appeals.

### STATUS OF PENDING CASES

At the end of the fiscal year, 654 primary cases and 30 supplemental proceedings were pending. All pending supplemental proceedings were complete and awaiting decision.

### JUSTICES AND THEIR TERMS

CHIEF JUSTICE RONALD T.Y. MOON

*March 31, 2003 - March 30, 2013*

ASSOCIATE JUSTICE STEVEN H. LEVINSON

*April 7, 2002 - April 6, 2012*

ASSOCIATE JUSTICE PAULA A. NAKAYAMA

*April 22, 2003 - April 21, 2013*

ASSOCIATE JUSTICE SIMEON R. ACOBA, JR.

*May 19, 2000 - May 18, 2010*

ASSOCIATE JUSTICE JAMES E. DUFFY, JR.

*June 27, 2003 - June 26, 2013*

## *Intermediate Court of Appeals*

### **STRATEGIC MISSION**

The mission of the Intermediate Court of Appeals is to provide timely disposition of appeals from trial courts and state agencies, including the resolution of the particular dispute and explication of the law for the benefit of the litigants, the bar, and the public.

### **COURT DESCRIPTION**

The second highest court in the State, the Intermediate Court of Appeals (ICA) shares concurrent jurisdiction with the Supreme Court in reviewing legal matters brought before the Courts of Appeal. The ICA's cases are assigned by the Supreme Court. Usually, the ICA reviews trial court decisions for errors while the Supreme Court reviews matters involving the formulation of the law. The ICA has the authority to reverse, remand, modify, or affirm decisions in all trial courts. Its decisions are subject to review by the Supreme Court.

The ICA is comprised of six judges, who sit in panels of three.

## *Intermediate Court of Appeals*

### **ACTIONS FILED**

A total of 298 primary cases and 180 supplemental proceedings were assigned to the Intermediate Court of Appeals in fiscal year 2003-04. Primary cases are assigned to the Intermediate Court of Appeals from the Supreme Court while supplemental proceedings may be filed directly with the Intermediate Court of Appeals or transferred from the Supreme Court.

### **TERMINATIONS**

During fiscal year 2003-04, the Intermediate Court of Appeals terminated 55% of its total caseload. This figure includes 232 primary cases and 184 supplemental proceedings.

### **STATUS OF PENDING CASES**

Three hundred eighteen primary cases and 22 supplemental proceedings were pending at the end of the 2003-04 fiscal year, 45% of the total caseload for the year.

### **JUDGES AND THEIR TERMS**

CHIEF JUDGE JAMES S. BURNS

*May 14, 2002 - May 13, 2012*

ASSOCIATE JUDGE CORINNE K.A. WATANABE

*May 11, 2002 - May 10, 2012*

ASSOCIATE JUDGE JOHN S.W. LIM

*June 1, 1999 - May 31, 2009*

ASSOCIATE JUDGE DANIEL R. FOLEY

*October 2, 2000 - October 1, 2010*

ASSOCIATE JUDGE CRAIG H. NAKAMURA

*April 8, 2004 - April 7, 2014*

ASSOCIATE JUDGE ALEXA D.M. FUJISE

*June 10, 2004 - June 9, 2014*

## *Land Court*

### **DESCRIPTION**

The Land Court is a statewide court of record which has exclusive jurisdiction of all applications for the registration of title to land and easements or rights in land held and possessed in fee simple within the state. It has the power to hear and determine all questions arising upon applications as they come before it under Hawai'i Revised Statutes, Chapter 501, subject to the rights of appeal.

### **ACTIONS FILED**

In fiscal year 2003-04, 12 cases were filed in the Land Court. Combined with the 48 cases pending at the end of the last fiscal year, the Land Court handled a total caseload of 60 cases.

### **TERMINATIONS AND PENDING CASES**

Thirty-three cases were terminated during fiscal year 2003-04, leaving 27 cases pending at the start of the new fiscal year.

## *Tax Appeal Court*

### **DESCRIPTION**

The Tax Appeal Court is a statewide court with jurisdiction over disputes concerning property, excise, liquor, income and insurance taxes.

The Tax Appeal Court is located in Honolulu and convenes in the other circuits (Hawai'i, Maui and Kaua'i) at least once each year to hear disputes involving real property taxes.

### **ACTIONS FILED**

In fiscal year 2003-04, 115 cases were filed in the Tax Appeal Court. Combined with the 467 pending cases at the end of the last fiscal year, the Tax Appeal Court's total caseload was 582 cases.

### **TERMINATIONS AND PENDING CASES**

The Tax Appeal Court terminated a total of 74 cases or 13% of the Court's caseload during the 2003-04 fiscal year. Five hundred and eight cases remained pending at the close of the fiscal year.

## *Trial Courts*

Hawaii's trial level is comprised of Circuit Courts and District Courts. Family Courts are included in the Circuit Courts. Hawaii's trial courts function in four judicial circuits that correspond approximately to the geographical areas served by the counties.

The First Judicial Circuit serves the City and County of Honolulu.

The Second Judicial Circuit serves the County of Maui, which includes the islands of Maui, Moloka'i, and Lāna'i.

The Third Judicial Circuit, divided into the districts of Hilo and Kona, administers the County of Hawai'i.

The Fourth Judicial Circuit is no longer used as a circuit designation. The Third and Fourth Circuits merged in 1943.

The Fifth Judicial Circuit serves the County of Kaua'i, which includes the islands of Kaua'i and Ni'ihau.

## Circuit Courts

### STRATEGIC MISSION

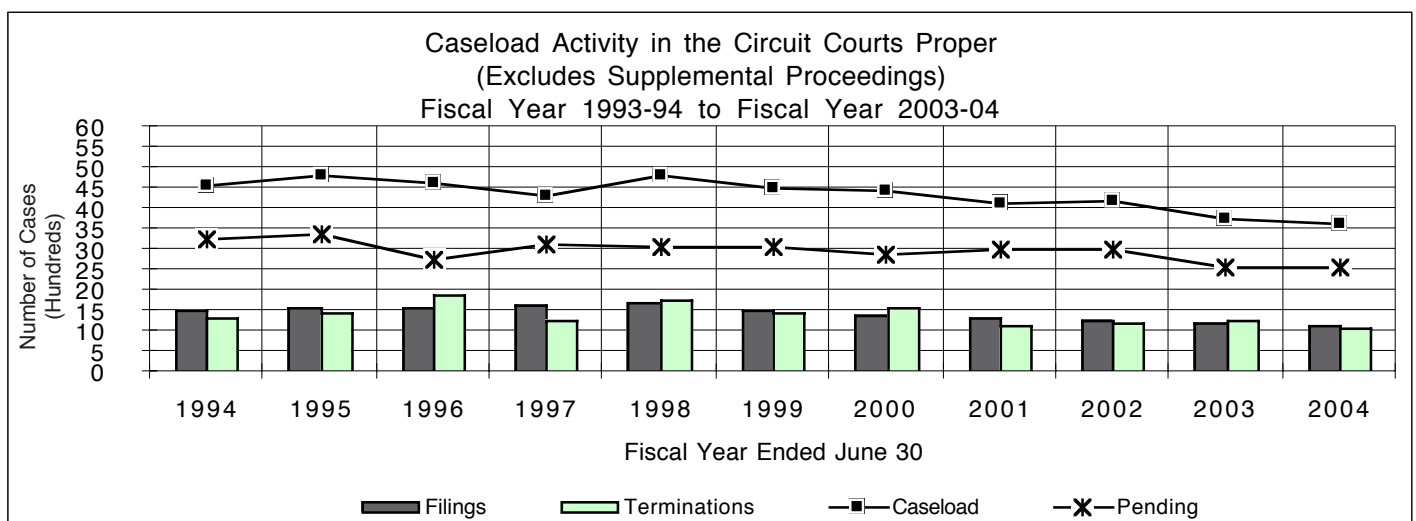
The mission of the Circuit Court is to expeditiously and fairly adjudicate or resolve all matters within its jurisdiction in accordance with law.

### DESCRIPTION

All jury trials are held in the Circuit Courts, which have general jurisdiction in civil and criminal cases. They also have exclusive jurisdiction in probate, guardianship and criminal felony cases, as well as civil cases where the contested amount exceeds \$20,000. Circuit Courts share concurrent jurisdiction

with District Courts in civil non-jury cases that specify amounts between \$10,000-\$20,000. Additional cases dispensed by the Circuit Courts include mechanics' liens and misdemeanor violations transferred from the District Courts for jury trials.

Circuit Court judges are appointed to ten-year terms by the Governor from a list of not less than four and not more than six nominees provided by the Judicial Selection Commission. The nominees are subject to confirmation by the State Senate.





## Circuit Courts

### ACTIONS FILED

Filings in the Circuit Courts Proper totaled 11,140 cases in fiscal year 2003-04. Of the cases filed, 3,643 or 33%, were civil cases, and 4,759, or 43%, were criminal cases.

### TERMINATIONS

During fiscal year 2003-04, the Circuit Courts terminated 10,846 cases.

### STATUS OF PENDING CASES

At the end of the 2003-04 fiscal year, a total of 32,803 cases were pending in the Circuit Courts Proper.

### ADULT PROBATION DIVISIONS

There were 3,374 investigations completed during fiscal year 2003-04. In supervision cases, where persons were placed on probation or subject to court-ordered control, including offenders released from the Hawai'i State Hospital, there were 2,404 new placements added to the 11,382 cases pending from the previous fiscal year. Of these, 1,618 cases were closed, leaving 12,168 open at the end of the 2003-04 fiscal year.

*Circuit Court Judges  
and their Terms*

**FIRST JUDICIAL CIRCUIT**

KARL K. SAKAMOTO, 1<sup>ST</sup> DIVISION  
*June 1, 2000 - May 31, 2010*

STEVEN S. ALM, 2<sup>ND</sup> DIVISION  
*May 14, 2001 - May 13, 2011*

VICTORIA S. MARKS, 3<sup>RD</sup> DIVISION  
*May 26, 2004 - May 25, 2014*

MARCIA J. WALDORF, 4<sup>TH</sup> DIVISION  
*June 18, 2002 - June 17, 2012*

EDEN ELIZABETH HIFO, 5<sup>TH</sup> DIVISION  
*April 30, 2003 - April 29, 2013*

MICHAEL D. WILSON, 6<sup>TH</sup> DIVISION  
*May 10, 2000 - May 9, 2010*

RICHARD W. POLLACK, 7<sup>TH</sup> DIVISION  
*May 10, 2000 - May 9, 2010*

RICHARD K. PERKINS, 8<sup>TH</sup> DIVISION  
DEPUTY CHIEF JUDGE  
CRIMINAL DIVISION  
*May 6, 2004 - May 5, 2014*

VIRGINIA LEA CRANDALL, 9<sup>TH</sup> DIVISION  
*April 1, 2001 - March 31, 2011*

RHONDA A. NISHIMURA, 10<sup>TH</sup> DIVISION  
*June 20, 2003 - June 19, 2013*

KAREN S. S. AHN, 11<sup>TH</sup> DIVISION  
*May 10, 2000 - May 9, 2010*

SANDRA A. SIMMS, 12<sup>TH</sup> DIVISION  
*Retired May 26, 2004*

DEXTER D. DEL ROSARIO, 13<sup>TH</sup> DIVISION  
*April 15, 2004 - April 14, 2014*

GARY W. B. CHANG, 14<sup>TH</sup> DIVISION  
*June 1, 1999 - May 31, 2009*

KAREN N. BLONDIN, 15<sup>TH</sup> DIVISION  
DEPUTY CHIEF JUDGE  
CIVIL DIVISION  
*May 11, 2002 - May 10, 2012*

MARIE N. MILKS, 16<sup>TH</sup> DIVISION  
*Retired March 15, 2004*

PATRICK W. BORDER, 16<sup>TH</sup> DIVISION  
*April 8, 2004 - April 7, 2014*

REYNALDO D. GRAULTY, 17<sup>TH</sup> DIVISION  
*March 5, 1999 - March 4, 2009*

FRANCES Q. F. WONG, 18<sup>TH</sup> DIVISION  
DEPUTY CHIEF JUDGE/  
SENIOR FAMILY COURT JUDGE  
*May 11, 2002 - May 10, 2012*

MICHAEL A. TOWN, 19<sup>TH</sup> DIVISION  
*April 30, 2003 - April 29, 2013*

COLLEEN K. HIRAI, 20<sup>TH</sup> DIVISION  
CHIEF JUDGE  
*May 6, 2004 - May 5, 2014*

BERT I. AYABE, 21<sup>ST</sup> DIVISION  
*June 10, 2004 - June 9, 2014*

SABRINA S. MCKENNA, 22<sup>ND</sup> DIVISION  
*June 30, 1995 - June 29, 2005*

DERRICK H. M. CHAN, 23<sup>RD</sup> DIVISION  
*August 25, 2000 - August 24, 2010*

## *Circuit Court Judges and their Terms*

### **SECOND JUDICIAL CIRCUIT**

SHACKLEY F. RAFFETTO, 1<sup>ST</sup> DIVISION  
CHIEF JUDGE/SENIOR FAMILY COURT JUDGE  
*June 9, 2004 - June 8, 2014*

JOEL E. AUGUST, 2<sup>ND</sup> DIVISION  
*June 10, 2002 - June 9, 2012*

JOSEPH E. CARDOZA, 3<sup>RD</sup> DIVISION  
*June 24, 1999 - June 23, 2009*

### **THIRD JUDICIAL CIRCUIT**

GREG K. NAKAMURA, 1<sup>ST</sup> DIVISION  
DEPUTY CHIEF JUDGE/  
SENIOR FAMILY COURT JUDGE  
*April 18, 2004 - April 17, 2014*

GLENN S. HARA, 2<sup>ND</sup> DIVISION  
*June 25, 2004 - June 24, 2014*

RONALD IBARRA, 3<sup>RD</sup> DIVISION  
CHIEF JUDGE  
*May 10, 1999 - May 9, 2009*

### **FIFTH JUDICIAL CIRCUIT**

GEORGE M. MASUOKA, 1<sup>ST</sup> DIVISION  
CHIEF JUDGE/SENIOR FAMILY COURT JUDGE  
*July 8, 1998 - July 7, 2008*

CLIFFORD L. NAKEA, 2<sup>ND</sup> DIVISION  
*Retired December 30, 2004*

## Family Courts

### STRATEGIC MISSION

The mission of the Family Court is to provide a fair, speedy, economical and accessible forum for the resolution of matters involving families and children.

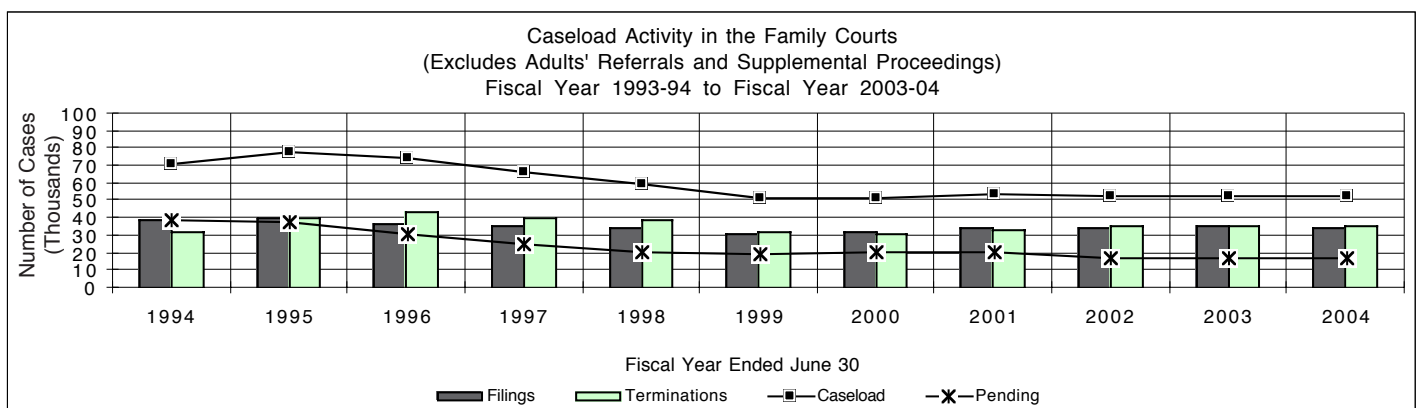
### DESCRIPTION

The Family Courts were established by statute in 1965 to deal with virtually all legal problems impinging on Hawai'i's families and children.

The Family Court hears all legal matters involving children, such as delinquency, waiver, status offenses, abuse and neglect,

termination of parental rights, adoption, guardianships, and detention. The Family Court also hears traditional domestic relations cases, including divorce, nonsupport, paternity, uniform child custody jurisdiction cases, and miscellaneous custody matters.

District Family Court judges are appointed to six-year terms by the Chief Justice from a list of at least six names submitted for each opening by the Judicial Selection Commission, subject to confirmation by the State Senate.



## *Family Courts*

### **ACTIONS FILED**

A total of 34,991 cases were filed in the Family Courts in fiscal year 2003-04.

### **TERMINATIONS**

Terminations totaled 35,235 in fiscal year 2003-04.

### **STATUS OF PENDING CASES**

There were 17,434 cases pending at the end of fiscal year 2003-04.

*Family Court Judges  
and their Terms*

**FIRST JUDICIAL CIRCUIT**

FRANCES Q. F. WONG, FIRST CIRCUIT COURT  
18<sup>TH</sup> DIVISION  
DEPUTY CHIEF JUDGE/  
SENIOR FAMILY COURT JUDGE  
May 11, 2002 - May 10, 2012

PATRICK W. BORDER, FIRST CIRCUIT COURT  
16<sup>TH</sup> DIVISION  
April 8, 2004 - April 7, 2014

REYNALDO D. GRAULTY, FIRST CIRCUIT COURT  
17<sup>TH</sup> DIVISION  
March 5, 1999 - March 4, 2009

MICHAEL F. BRODERICK  
June 6, 2003 - June 5, 2009

R. MARK BROWNING  
June 6, 2003 - June 5, 2009

KENNETH E. ENRIGHT  
February 28, 2003 - February 27, 2009

CHRISTINE E. KURIYAMA  
May 20, 2004 - May 19, 2010

LINDA K. C. LUKE  
December 29, 2004 - December 28, 2010

PAUL T. MURAKAMI  
June 7, 2002 - June 6, 2008

KAREN M. RADIUS  
December 9, 2000 - December 8, 2006

ALLENE K. SUEMORI  
March 31, 1999 - March 30, 2005

BODE A. UALE  
October 27, 2004 - October 26, 2010

**SECOND JUDICIAL CIRCUIT**

SHACKLEY F. RAFFETTO, SECOND CIRCUIT COURT  
1<sup>ST</sup> DIVISION  
CHIEF JUDGE/SENIOR FAMILY COURT JUDGE  
June 9, 2004 - June 8, 2014

SIMONE C. POLAK  
May 28, 2004 - May 27, 2010

GERONIMO VALDRIZ, JR.  
May 26, 2000 - May 25, 2006

**THIRD JUDICIAL CIRCUIT**

GREG K. NAKAMURA, THIRD CIRCUIT COURT  
1<sup>ST</sup> DIVISION  
DEPUTY CHIEF JUDGE/  
SENIOR FAMILY COURT JUDGE  
April 18, 2004 - April 17, 2014

ALEY K. AUNA, JR.  
April 4, 2000 - April 3, 2006

BEN H. GADDIS  
May 17, 2001 - May 16, 2007

TERENCE T. YOSHIOKA  
April 28, 2000 - April 27, 2006

**FIFTH JUDICIAL CIRCUIT**

GEORGE M. MASUOKA, FIFTH CIRCUIT COURT  
1<sup>ST</sup> DIVISION  
CHIEF JUDGE/SENIOR FAMILY COURT JUDGE  
July 8, 1998 - July 7, 2008

CALVIN K. MURASHIGE  
June 25, 1999 - June 24, 2005

## District Courts

### STRATEGIC MISSION

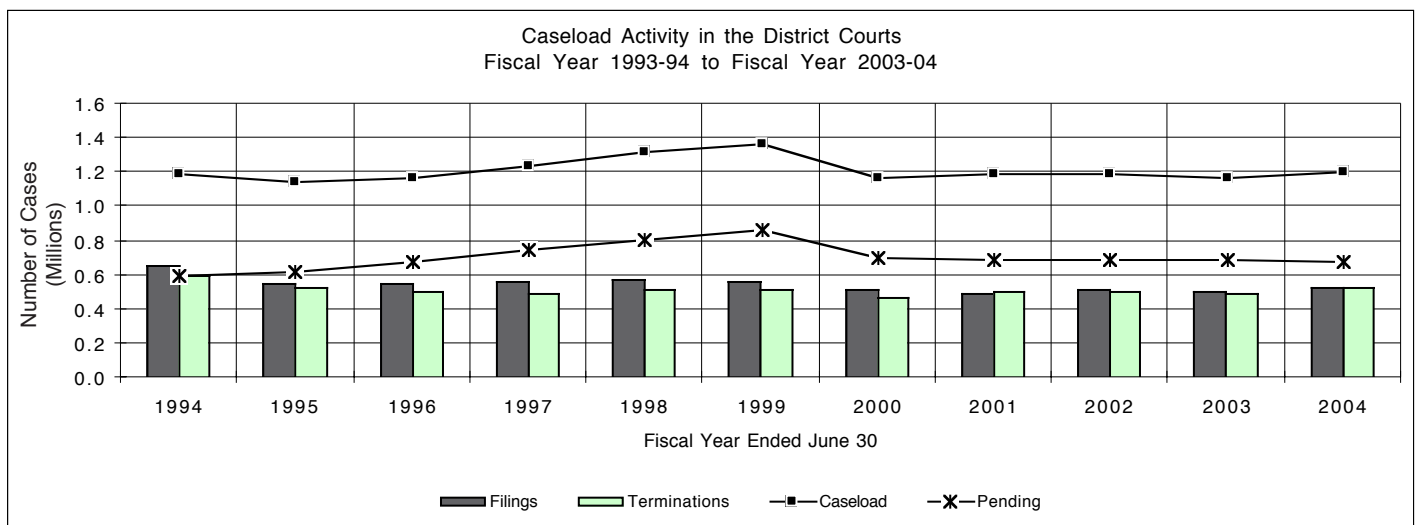
The mission of the District Court is to serve the people of Hawai'i through the fair and efficient adjudication and resolution of cases and controversies brought before it.

### DESCRIPTION

The District Courts have exclusive jurisdiction over traffic infractions, summary possession or ejectment proceedings (landlord-tenant), regardless of the amount of the claim. The District Courts also have jurisdiction over non-jury trial civil cases where the debt, amount, damages, or value of the property claimed does not exceed

\$20,000, or where the remedy sought is specific performance valued under \$20,000, criminal offenses punishable by fine or by imprisonment not exceeding one year, cases arising from violations of a county ordinance, and petitions for restraining orders for relief from and for injunctions against harassment.

District Court judges are appointed to six-year terms by the Chief Justice from a list of at least six names submitted for each opening by the Judicial Selection Commission, subject to confirmation by the State Senate.



*District  
Courts*

**ACTIONS FILED**

During the 2003-04 fiscal year, 527,970 cases were filed in the District Courts. Traffic violation cases constituted the bulk of the filings, accounting for 85% of all case filings. Civil actions represented approximately 3% of filings, criminal actions 11%, and other violations 1%.

**TERMINATIONS**

A total of 522,206 cases were terminated in the District Courts during the fiscal year.

**PENDING CASES**

There were 679,506 cases pending at the end of fiscal year 2003-04.



## District Court Judges and their Terms

### **FIRST JUDICIAL CIRCUIT**

COLETTE Y. GARIBALDI  
DEPUTY CHIEF JUDGE  
*February 28, 2003 - February 27, 2009*

WILLIAM A. CARDWELL  
*May 20, 2004 - May 19, 2010*

HILARY BENSON GANGNES  
*May 22, 2002 - May 21, 2008*

LESLIE ANN HAYASHI  
*November 5, 2002 - November 4, 2008*

GERALD H. KIBE  
*January 6, 2001 - January 5, 2007*

FAYE M. KOYANAGI  
*June 10, 2003 - June 9, 2009*

LONO J. LEE  
*June 10, 2003 - June 9, 2009*

DAVID W. LO  
*August 23, 2000 - August 22, 2006*

CHRISTOPHER P. MCKENZIE  
*May 22, 2002 - May 21, 2008*

RUSSEL S. NAGATA  
*October 5, 2004 - October 4, 2010*

CLARENCE A. PACARRO  
*June 7, 2002 - June 6, 2008*

BARBARA P. RICHARDSON  
*May 5, 2000 - May 4, 2006*

FA'AUUGA TO'OTO'O  
*December 9, 2000 - December 8, 2006*

### **SECOND JUDICIAL CIRCUIT**

RHONDA I. L. LOO  
DEPUTY CHIEF JUDGE  
*May 1, 2003 - April 30, 2009*

REINETTE W. COOPER  
*May 7, 2001 - May 6, 2007*

DOUGLAS H. IGE  
*June 28, 2002 - June 27, 2008*

### **THIRD JUDICIAL CIRCUIT**

MATTHEW S. K. PYUN, JR.  
DEPUTY CHIEF JUDGE  
*May 14, 2003 - May 13, 2009*

JOSEPH P. FLORENDO, JR.  
*November 3, 2004 - November 2, 2010*

BARBARA T. TAKASE  
*May 26, 2004 - May 25, 2010*

### **FIFTH JUDICIAL CIRCUIT**

CALVIN K. MURASHIGE  
DEPUTY CHIEF JUDGE  
*June 25, 1999 - June 24, 2005*

TRUDY K. SENDA  
*May 4, 2001 - May 3, 2007*

*Per Diem Judges*

**FIRST JUDICIAL CIRCUIT**

Marilyn Carlsmith  
Valerie W.H. Chang  
Gale L.F. Ching  
Lawrence R. Cohen  
James H. Dannenberg  
Paula Devens-Matayoshi  
Philip Doi  
Peter C.K. Fong  
Lenore K.J.H. Lee  
Wilson M.N. Loo  
Michael A. Marr  
Richard A. Marshall  
Patricia Ann McManaman  
William J. Nagle III  
Katharine M. Nohr  
Lillian Ramirez-Uy  
Nancy Ryan  
Yvonne R. Shinmura  
Peter T. Stone  
Clyde E. Sumida  
Matthew J. Viola  
William K. Wallace, III  
Timothy David Woo, Jr.  
Gregg Young

**SECOND JUDICIAL CIRCUIT**

Jan K. Apo  
Ruby A. Hamili  
Paul L. Horikawa  
Mary Blaine Johnston  
Barclay E. MacDonald  
Jack R. Naiditch  
Eric G. Romanchak  
Douglas J. Sameshima

**THIRD JUDICIAL CIRCUIT**

Karen Napua Brown  
William S. Chillingworth  
Victor M. Cox  
Colin L. Love  
Shawn Maile Nakoa  
Wayne C. Metcalf, III  
John P. Moran  
Stuart H. Oda  
Elizabeth Ann Strance

**FIFTH JUDICIAL CIRCUIT**

Max W.J. Graham, Jr.  
Walton D.Y. Hong  
Joseph N. Kobayashi  
Gerald S. Matsunaga  
Frank D. Rothschild

## *Support Services*

### **STRATEGIC MISSION**

The mission of the Office of the Administrative Director of the Courts is to promote the administration of justice in Hawai'i by providing professional, responsive administrative support to the Chief Justice, the courts and Judiciary programs and to expedite, facilitate and enhance the mission of the Judiciary.

### **ADMINISTRATION**

The Office of the Administrative Director of the Courts has the primary responsibility for the daily operations of the court system. The Administrative Director is appointed by the Chief Justice with the approval of the Supreme Court, and is assisted by the Deputy Administrative Director.

The Administrative Director also coordinates the Judiciary's annual presentations to the Legislature, both for the Judiciary budget and for changes in laws relating to the operation of the judicial system.

Administrative programs are divided into three divisions: the Intergovernmental and Community Relations Division, the Support Services Division, and the Policy and Planning Division. Programs that fall under the three divisions include: Affirmative Action/EEO, Budget and Statistics, Fiscal and Support Services, Equality and Access to the Courts, Internal Audit, Judicial Education and Resource Development, Personnel, Planning and Evaluation, Public Affairs, Staff Attorneys, Telecommunication and Information Services, and Volunteers in Public Service to the Courts. Other program components providing statewide operational responsibilities are the Administrative Driver License Revocation Office, Center for Alternative Dispute Resolution, Children's Justice Centers, King Kamehameha V - Judiciary History Center, Law Library, Office of the Public Guardian, Records Management, and Special Projects/Legislative Office.

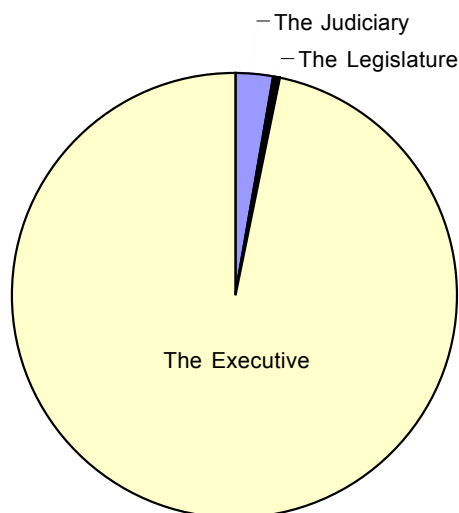
## *Financial Resources*

Appropriations for the Hawai‘i State Judiciary are made by the Legislature on a statewide basis, with each fiscal year beginning July 1 and ending June 30. Both the operating and capital improvements budgets of the Judiciary are legislatively determined each biennium with operating monies allocated from the State General and Special Funds and capital improvement monies from the State Capital Project Fund.

Combined, the State General and the Capital Project Funds represent over 96 percent of the funding source of all Judiciary expenditures. The Legislature appropriated \$110,997,921 from the State General Fund for operations during the current fiscal year, and \$2,710,000 to the Judiciary from the State Capital Project Fund. Other operating monies come from federal funds, trust funds, and special revenue funds such as the Driver Education and Training Fund.

## Financial Resources

<b>THE JUDICIARY OPERATING FUNDS FISCAL YEARS 2004-2007 BUDGET SUMMARY</b>				
PROGRAM	FY 2004 Actual Expenditures	FY 2005 Actual Expenditures	Biennium Budget Appropriations	
			FY 2006	FY 2007
JUD 101 - COURTS OF APPEAL				
General Fund	5,819,645	5,934,153	6,371,337	6,388,597
Revolving Fund	24,431	243,261	243,261	243,261
JUD 310 - FIRST JUDICIAL CIRCUIT				
General Fund	56,992,340	61,443,631	63,729,248	63,888,218
Special Fund	2,562,872	3,387,016	3,387,016	3,387,016
JUD 320 - SECOND JUDICIAL CIRCUIT				
General Fund	11,071,923	12,786,691	13,511,660	13,498,584
JUD 330 - THIRD JUDICIAL CIRCUIT				
General Fund	13,393,750	15,217,904	15,638,321	15,607,302
JUD 350 - FIFTH JUDICIAL CIRCUIT				
General Fund	4,696,931	5,656,175	6,135,328	6,305,369
JUD 601 - ADMINISTRATION				
General Fund	18,482,859	17,943,258	18,231,646	17,921,674
Special Fund	2,683,237	3,437,738	5,550,000	5,550,000
TOTALS				
General Fund	110,457,448	118,981,812	123,617,540	123,609,744
Special Fund	5,246,109	6,824,754	8,937,016	8,937,016
Revolving Fund	24,431	243,261	243,261	243,261



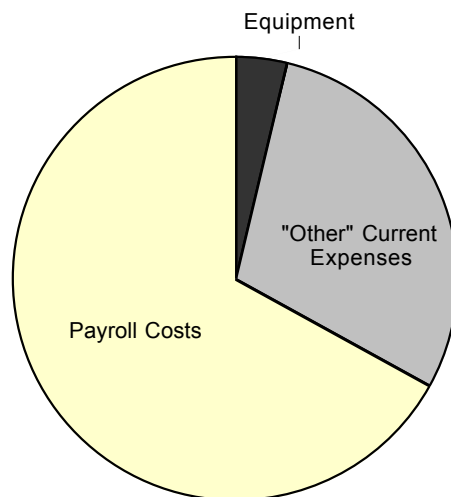
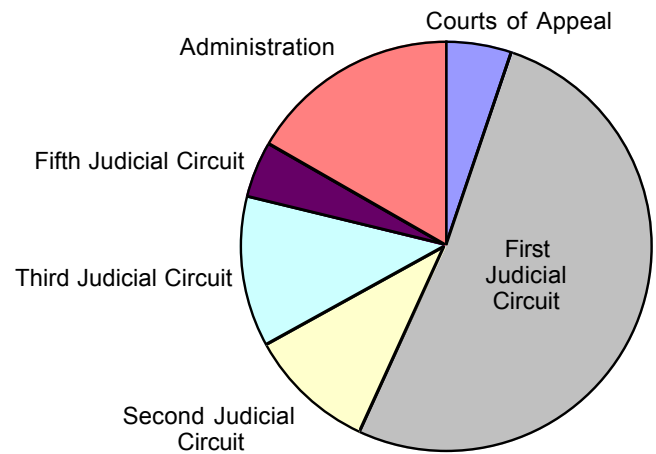
### TOTAL STATE GOVERNMENT APPROPRIATIONS FROM STATE GENERAL FUND FISCAL YEAR 2003-04

The Judiciary	2.86%	\$ 110,997,921
The Legislature	.60%	23,192,370
The Executive	96.54%	3,742,756,651
Total		\$ 3,876,946,942

## Financial Resources

### STATE GENERAL FUND EXPENDITURES BY COURT ELEMENT FISCAL YEAR 2003-04

Courts of Appeal	5.3%	\$ 5.8 million
First Judicial Circuit	51.6%	57.0 million
Second Judicial Circuit	10.0%	11.1 million
Third Judicial Circuit	12.1%	13.4 million
Fifth Judicial Circuit	4.3%	4.7 million
Administration	16.7%	18.5 million
Total		\$ 110.5 million



### STATE GENERAL FUND EXPENDITURES BY COST CATEGORY FISCAL YEAR 2003-04

Equipment	4%	\$ 4.3 million
"Other" Current Expenses	29%	31.9 million
Payroll Costs	67%	74.3 million
Total		\$ 110.5 million

## *List of Available Judiciary Publications*

IF YOU ARE INTERESTED IN THE FOLLOWING PUBLICATIONS, PLEASE CONTACT:

The Judiciary Public Affairs Office  
Ali'iōlani Hale  
417 South King Street  
Room 206-C  
Honolulu, Hawai'i 96813

Internet site: [www.courts.state.hi.us](http://www.courts.state.hi.us)

### **PUBLICATIONS**

Are You Interested in Being a Court Interpreter?  
Attorney-Client Relations Program  
Being 18-Local Style  
Center for Alternative Dispute Resolution  
Children and Divorce  
Children's Justice Center of O'ahu  
Commission on Judicial Conduct  
Community Mediation  
Community Service Sentencing Branch  
Court Orientation Tours  
Disciplinary Complaints Against Lawyers  
Going to Small Claims Court? What Do You Know About Mediation?  
Going to Probate Court? What Do You Know About Mediation?  
Judiciary History Center  
Lawline  
Lawyer Referral Information Service  
Selecting a Mediator  
Speakers Bureau Program  
The Judiciary State of Hawai'i 2004 Annual Report  
The Judiciary State of Hawai'i 2004 Statistical Supplement  
The Judiciary Welcomes Volunteers  
Your Guide to Small Claims Court  
Your Guide to Regular Claims Court

### **VIDEOS**

*An Informational Video on Deferred Acceptance of Guilty (DAG) and  
Deferred Acceptance of No Contest (DANC) Plea (TRT 18:00)*  
*Broken Scales: Justice Under Influence (TRT 18:17)*  
*Informational Video on Small Claims (TRT 16:18)*  
*Informational Video on Traffic Violations (TRT 15:15)*  
*Jury Orientation Video (TRT 18:25)*  
*Mediation: An Alternative to Court (TRT: 18:00)*  
*The Purple Family: Divorce Education Video (TRT 23:52)*