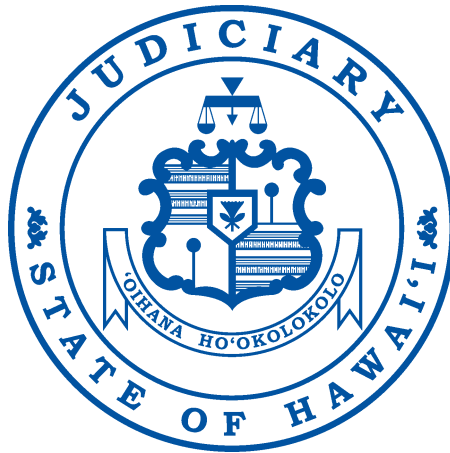

The Judiciary State of Hawai‘i



2005 Annual Report

*The mission of the Judiciary,
as an independent branch of
government, is to administer
justice in an impartial, efficient
and accessible manner in
accordance with the law.*

I am pleased to present our 2005 Annual Report that details the work of the Judiciary during the past year. As an independent branch of government, the Judiciary's role is to administer justice in an impartial manner, free from outside influences.

This report reflects the dedication of the men and women who work in the court system. Each day, these employees strive to fulfill our mission, knowing that what they do may have far-reaching impacts upon people's lives. I am proud of our employees' work and extend to them my heartfelt thanks and appreciation. I also thank another valuable part of our Judiciary family—the many volunteers who unselfishly give of their time and talent to serve the people of Hawai'i.

On behalf of the Judiciary, I also extend our sincere appreciation to the Legislature for its continued support of our budgetary needs and legislative initiatives. I also wish warm *aloha* to Governor Lingle, her cabinet and members of the Legislature. We pledge our continued commitment to working with you to build a dynamic and progressive judicial system. Our mutual quest for excellence depends on our cooperative and collaborative efforts.



Ronald T. Y. Moon
Chief Justice
Hawai'i Supreme Court



Table of Contents

MONTH-BY-MONTH HIGHLIGHTS	1
STRUCTURE OF THE JUDICIARY	
Court System	7
Administrative System	8
NEW JUDICIAL APPOINTMENTS	9
COURTS OF APPEAL	11
Supreme Court	14
Intermediate Court of Appeals	16
Land Court	18
Tax Appeal Court	18
TRIAL COURTS	19
Circuit Courts	20
Family Courts	24
District Courts	27
Per Diem Judges	30
SUPPORT SERVICES	31
FINANCIAL RESOURCES	32

Month-by-Month Highlights

JANUARY

New Chief Court Administrator for O'ahu

William Santos began work as the new chief court administrator for the First Circuit, following the retirement of his predecessor, Kenneth Ling. Mr. Santos, who was named to the post by Chief Justice Ronald Moon, had served since April 2001 as deputy chief court administrator.

Chief Justice Discusses State of Judiciary

Chief Justice Moon delivered the State of the Judiciary address to the 2005 Hawai'i State Legislature. Although the courts face many challenges, such as increased difficulty in securing attorneys to represent indigent defendants, Justice Moon assured that the state of the Judiciary "remains sound."

He also pointed out that the Judiciary has implemented adult drug court programs statewide, and that the rollout of the Judiciary Information Management System will transform the way state courts do business.

Performance Program Evaluates 25 Jurists

Chief Justice Moon released the tenth Judicial Performance Program report summarizing evaluations of 25 state justices and judges. Scores were based on a scale ranging from one, for Poor, to five, for Excellent.

Supreme Court justices and Intermediate Court of Appeals judges had mean scores of 4.3 for the Fairness/Impartiality section, 4.0 for Written Opinions and 4.3 in the Oral Argument section.

Circuit Court judges had mean scores of 4.2 in the Legal Ability section, 4.2 for Judicial Management Skills, 4.4 for Comportment and 4.1 in the Settlement and/or Plea Agreement Ability section.

For District Court judges, the average score for the Legal Ability section was 4.2, the average score for the Settlement and/or

Plea Agreement Ability section was 4.2, and the Judicial Management Skills section averaged 4.2.

MARCH

Grant to Develop Programs for Girls

Under a three-year grant from the state Office of Youth Services, the First Circuit Family Court received nearly \$250,000 on March 1 to help ensure continuation of the new Girls Court program. The grant will also help develop, in collaboration with other agencies, a continuum of programs to more effectively address the needs of girls involved in the juvenile justice system.

Girls Court was launched on O'ahu in 2004 as a pilot project. Services include alternative education and vocational training, and seminars on teen pregnancy prevention, substance abuse treatment, domestic violence prevention and intervention, healing from trauma and escaping sexual exploitation. Family members are required to participate in classes and group activities.

Girls Court is spearheaded by Senior Family Court Judge Frances Wong. The presiding judge is Karen Radius.

Second Circuit Expands Drug Court

The Second Circuit Family Court announced the expansion of drug court services to residents of Maui and Moloka'i, using funds appropriated by the state legislature through Act 40.

Moloka'i residents are now able to participate in the Maui Drug Court Program without relocating to the Valley Isle. Youth and families on Maui and Moloka'i may participate in a Family Court Drug Court program consisting of a continuum of comprehensive and integrated services utilizing a family/systems-based intervention. The program is designed to divert occasional

Month-by-Month Highlights

and experimental adolescent users from continued and escalating drug use.

Groundbreaking Held for Hilo Complex

Chief Justice Moon and Third Circuit Chief Judge Ronald Ibarra joined Hawai'i Mayor Harry Kim, state legislators and other Big Island leaders at a groundbreaking ceremony for the Hilo Judiciary Complex.

"The complex will be a significant improvement over our existing facility in Hilo, providing public and operational spaces, many modern and technologically-equipped, state-of-the-art features and updated security provisions," Chief Justice Moon said. "Moreover, this complex will enable us to consolidate – in one building – all of our courts in Hilo as well as house Judiciary offices and programs currently located at five different sites throughout Hilo."

The three-story, 175,000-square-foot complex is being built on an eight-acre site that previously housed the Kaiko'o Mall shopping center. The complex – consisting of a main, three-story structure and an adjoining one-story wing – will contain seven general purpose courtrooms, two family courtrooms, a law library, public lobby, holding cells, witness rooms, attorney interview rooms and a grand jury meeting room.

Scheduled for completion in the fall of 2007, the project has a total anticipated cost of \$86 million for planning, design, construction and equipment.



Judiciary officials joined Big Island leaders and state legislators at a groundbreaking ceremony for the Hilo Judiciary Complex.

APRIL

Legislators Appropriate \$95 Million for Kapolei Court Complex

During a conference committee meeting in April, state House and Senate members agreed to fund the Kapolei Court Complex and Juvenile Detention Facility. The \$95 million appropriation was needed to ensure transfer of approximately 13.6 acres of Campbell Estate-owned land on which the court complex will be built.

The court facility in rapidly growing West O'ahu will accommodate more court operations, including jury and non-jury trials, related probation and social service functions and certain district court functions. It will also help relieve overcrowding at existing facilities, and provide more waiting areas and other public-use spaces than are presently available in the downtown Honolulu and Wai'anae court facilities.

Construction of the court complex and juvenile detention center is scheduled to begin in 2007 and be completed by 2010.

MAY

Statewide Activities Commemorate Law Day and Juror Appreciation Week

A number of activities were held statewide as the Judiciary participated in National Law Day and Juror Appreciation Week from May 2 to 6. The American Bar Association chose "*The American Jury: We the People in Action*" as this year's theme for the nationwide observances.

Chief Justice Moon called upon all chief judges and chief court administrators to help educate the public about the importance of the American jury system and to honor those who answer the call to serve on juries.

Activities included mock trials involving elementary and high school students, court tours and the presentation of a proclamation by Lt. Governor James R. "Duke" Aiona, Jr. to Chief Justice Moon, former and current jurors and Hawai'i State Bar Association President Richard Turbin.

During the first week of May, all prospective jurors reporting for jury service

Month-by- Month Highlights

received complimentary refreshments and neck lanyards inscribed with "Law Day Hawai'i 2005." A series of op-ed pieces on the court system also appeared in the Honolulu Advertiser.

JUNE

Web Site Launched for Kapolei Court Complex; Public Input Encouraged

The Judiciary launched a Web site as one way of informing the public and encouraging input about plans for the Kapolei Court Complex and Juvenile Detention Facility.

It may be accessed via the Special Projects and Events section of the Judiciary site at www.courts.state.hi.us.

The Internet pages contain an overview of the court complex, the latest updates, an archive of media reports, details about the design plan, a photo gallery and a project timeline.

Another important element is an online feedback form. This enables the public to submit comments about the complex, the Juvenile Detention Facility and the Honolulu-based Family Court.

Agency to Pursue Delinquent Accounts

The Judiciary signed a five-year contract with Texas-based Municipal Services Bureau (MSB) to pursue collection of delinquent accounts.

According to Judiciary policy, an account is considered delinquent if it remains unpaid for 30 days after its due date, with the exception of traffic cases that will be on a 90-day or 180-day schedule.

Founded in 1991, MSB collaborates with more than 500 cities, counties, colleges, universities and various government entities nationwide as an active member of the American Collectors Association.

JULY

Facility Upgrades Lead to Energy Rebates

The Judiciary received \$161,000 in energy-efficiency rebates as a result of an extensive lighting retrofit project and air-conditioning equipment upgrades at facilities on O'ahu and Maui. The funds were

credited against Judiciary utility bills through the Energy\$olutions for Business program offered by Hawaiian Electric Company (HECO).

At a check presentation ceremony, Jackie Mahi Erickson, HECO vice president and general counsel, praised the Judiciary as an energy conservation leader in state government. By installing energy-efficient equipment, the Judiciary saves enough electricity each year to supply 400 homes, she noted, while making a positive impact on the environment and helping reduce demand on current energy reserves.



Jackie Mahi Erickson of HECO presented an energy conservation rebate check to Jonathan Wong (left), a purchasing and specifications specialist; and Rick Keller, administrative director of the courts.

The lighting retrofits were performed at Ali'iolani Hale, Ka'ahumanu Hale and Kauikeaouli Hale in Honolulu, Hoapili Hale in Wailuku and at the Lahaina District Courthouse.

The air-conditioning improvements took place at Ka'ahumanu Hale and Kauikeaouli Hale.

Drug Czar Briefed on Hawai'i Drug Courts

John P. Walters, director of the White House Office of National Drug Control Policy, visited the Judiciary to learn more about Hawai'i's drug court programs. He highlighted federal efforts to fight substance abuse. As the nation's "drug czar," Director Walters coordinates all aspects of federal drug programs and spending.

Director Walters took part in a roundtable discussion with Chief Justice Moon and First Circuit Drug Court Judges Bode Uale, Matthew Viola and Marcia Waldorf. Other participants included drug court coordinators, treatment providers and representatives of the prosecutor and public defender's offices. Director Walters also

Month-by-Month Highlights

observed several status hearings conducted by Judge Waldorf.

AUGUST

Kaua'i Judiciary Complex Dedicated

Chief Justice Moon and Fifth Circuit Chief Judge George Masuoka were among the speakers at a dedication ceremony for the Kaua'i Judiciary Complex. Formally named Pu'uhoonua Kaulike, meaning "The Sanctuary of Justice," the state-of-the-art complex opened to the public on Aug. 22.

"This modern and comprehensive complex contains much-needed and long-overdue additional space," Judge Masuoka said, "enabling us to consolidate many court operations in a convenient and central location."

The three-story, 112,000-square-foot facility was constructed on a 6.5-acre parcel at Kā'ana Street and Kapule Highway, next to the Kaua'i Veterans Center in Līhu'e. One wing contains six technologically enhanced courtrooms and judicial chambers. The other wing houses administrative functions and court-user services.



Kaua'i Judiciary Complex in Līhu'e

Adorning the building's facade are glass mosaic murals created by Kaua'i artist Carol Bennett. Titled "Kanawai" (Law), the artwork depicts falling water that represents justice raining down like "a mighty stream," Bennett said. The murals were commissioned and funded through the state's Art in Public Places Program.

New Courtroom Opens in West Hawai'i

The Judiciary dedicated a \$260,000 courtroom with related facilities in Kealahou.

The courtroom, in a commercial building makai of Mamalahoa Highway, serves as the Kona site for the Big Island Drug Court and other cases.

By adding this site, the Judiciary now has two courtrooms in West Hawai'i. Chief Judge Ronald Ibarra serves as presiding judge at the new facility.

Volunteers Acknowledged for Service

Participants with the Volunteers in Public Service to the Courts program were acknowledged at the Supreme Court. Among those personally thanking the volunteers were Associate Justice Steven Levinson and Administrative Director of the Courts Rick Keller.

Administrative Director Keller noted that 464 volunteers contributed more than 45,000 hours of service during the past fiscal year. They serve in capacities such as docents, receptionists, computer operators, clerical aides and advocates for victims of child abuse and neglect.

Kids First Marks 10th Anniversary

Volunteers, judges, psychologists and other persons involved with Kids First were honored Aug. 26 at a celebration marking the program's tenth anniversary on O'ahu. Among those attending were Chief Justice Moon, First Circuit Deputy Chief Judge Frances Wong and Charlene Anaya, Kids First statewide coordinator.

Kids First helps families going through divorce. Since the program began in 1995, it has served 40,000 individuals on O'ahu. In addition, Kids First launched a program one year ago to help unmarried couples with child custody disputes.

Web Site Named One of World's Top Ten

The Judiciary's Internet site was named one of the top ten court-related Web sites in the world for 2005. Conferring the honor was Justice Served, an alliance of court management and justice experts, that commended the site for offering advanced e-services to the public, such as online

Month-by-Month Highlights

payment, a juror orientation video, Web-accessible dockets and self-help text.

Based in Eureka, California, Justice Served reviewed more than 3,000 Web sites in determining its top ten list. The other winners were: Superior Court of California, Santa Barbara County; National Center for State Courts; Indiana Courts; Superior Court of California, County of San Mateo; Louisiana Supreme Court; First Judicial District of Pennsylvania; Missouri Judiciary; Australian Northern Territory Government, Fines Recovery Unit; and Vermont Judiciary.



SEPTEMBER

National Honor Goes to Judge Browning for Helping Orphans, Foster Children

For his dedication to improving the lives of orphans and foster children, First Circuit Family Court Judge R. Mark Browning received a national honor from the nonprofit Congressional Coalition on Adoption Institute.

Congressman Ed Case nominated Judge Browning as a Hawai'i recipient of the annual "Angels in Adoption" award, which was presented during a Sept. 13 ceremony in Washington, D.C. President George W. Bush and First Lady Laura Bush served as honorary co-chairs of a gala banquet following the ceremony.

Attorneys Displaced by Hurricane Katrina Authorized to Practice Law in Hawai'i

To help Gulf Coast attorneys continue to serve their clients in the wake of Hurricane Katrina, the state Supreme Court authorized them to practice law in Hawai'i through March 31, 2006, should they choose to relocate here.

Under an order issued Sept. 22 by Chief Justice Moon, attorneys in good standing from Louisiana, Mississippi and Alabama were granted temporary admission to the Hawai'i State Bar Association. To practice in the state, they must be associated with a licensed Hawai'i attorney.

The Judiciary also joined other members of the legal community in helping arrange internships and housing for displaced law school students from New Orleans.

Online Job Recruitment System Debuts

The Judiciary Human Resources Department launched an Internet-based recruitment system in September to automate the job requisition and certification process. Court employees and the general public may now view job announcements 24 hours a day, seven days a week and establish accounts allowing them to create master job application files that can be retrieved and submitted for other openings.

Providing the software program is NEOGOV Insight, Inc., a California-based corporation with more than 50 clients in the public sector, including the City and County of Honolulu.

Judge Masuoka Honored as "Jurist of Year"

During a ceremony at the Supreme Court, Chief Justice Moon honored Fifth Circuit Chief Judge Masuoka as 2005 "Jurist of the Year" and recognized individual Judiciary employees and teams for their outstanding contributions.

Judge Masuoka was lauded for coordinating funding and construction of the Kaua'i Judiciary Complex and for playing a leading role on numerous Judiciary committees.

Receiving Distinguished Service awards

were First Circuit jury pool manager Freida Baker and computer systems analyst Jack Wong. This accolade is the most prestigious honor presented under the annual Incentive Awards program.

Individual Meritorious Service awards went to First Circuit court clerk



Judge George Masuoka

Dawn Ching and to Ann Koto, who directs the law library system.

Month-by-Month Highlights

A Group Meritorious Service award went to the JIMS traffic module implementation team: Julianne Britton, Stanley Ching, Milton Hee, Naomi Komenaka, Laurulie Maeda, Lois Maeda, Mae Matsuura, Dana Nakasato, Rosalind Rodrigues, Faye Rodriguez, Linda Tom and Jack Wong of the First Circuit; Colin Rodrigues of the Second Circuit; Debbie Choo, Lisa Ciriako and Cheryl Salmo of the Third Circuit; and Wanda Shimizu and Vera Tabe of the Fifth Circuit.

Receiving the Spirit of the Judiciary award was bailiff Joseph Gusman of the Third Circuit Court Support and Operations Branch in Kona. Honored with an individual Certificate of Commendation was Vance Wakakuwa of the Second Circuit Computer Support Branch.

A group Certificate of Commendation went to Vincent Borja and Sheri Shimabuku of the First Circuit Adult Client Services Branch. They developed and conducted a training program to help probation officers better communicate with offenders.

Also receiving a group Certificate of Commendation were Miki McGarvey and Sidney Nakamoto of the First Circuit Adult Client Services Branch. As representatives of the Interstate Compact, they developed new policies and procedures and trained criminal justice staff regarding revised rules for moving adult offenders in and out of Hawai'i.

OCTOBER

Web Site Covers Court Interpreter Program

A new section of the Judiciary Web site (under Services) was launched to support the court interpreting program administered by the Office on Equality and Access to the Courts. These Internet pages provide information on how to become a registered court reporter, how to obtain an interpreter, the statewide testing schedule and current rates of pay.

Chief Justice Calls on Attorneys to Defend Judicial Independence

Chief Justice Moon, in a speech to the Hawai'i State Bar Association Young Lawyers Division, called on attorneys to be vigilant in their defense of judicial independence.

Speaking at the annual Bar convention in Waikīkī, the Chief Justice said continued attacks on judicial independence, combined with the public's lack of understanding regarding separation of government powers, have produced a "crisis situation."



Chief Justice Moon and Ryan Au, incoming president of the Hawai'i State Bar Association Young Lawyers Division.

NOVEMBER

Traffic-Related Portion of JIMS Goes Live

The Judiciary Information Management System (JIMS) traffic module went live to the public, bringing about "a new technological era for the Judiciary," according to Chief Justice Moon.

Transitioning to JIMS required a massive effort by Judiciary employees, who converted records from 3.6 million traffic cases stored in an antiquated computer system installed in the 1970s.

When fully phased in over the next several years, JIMS will unify all the state courts through a single database.

DECEMBER

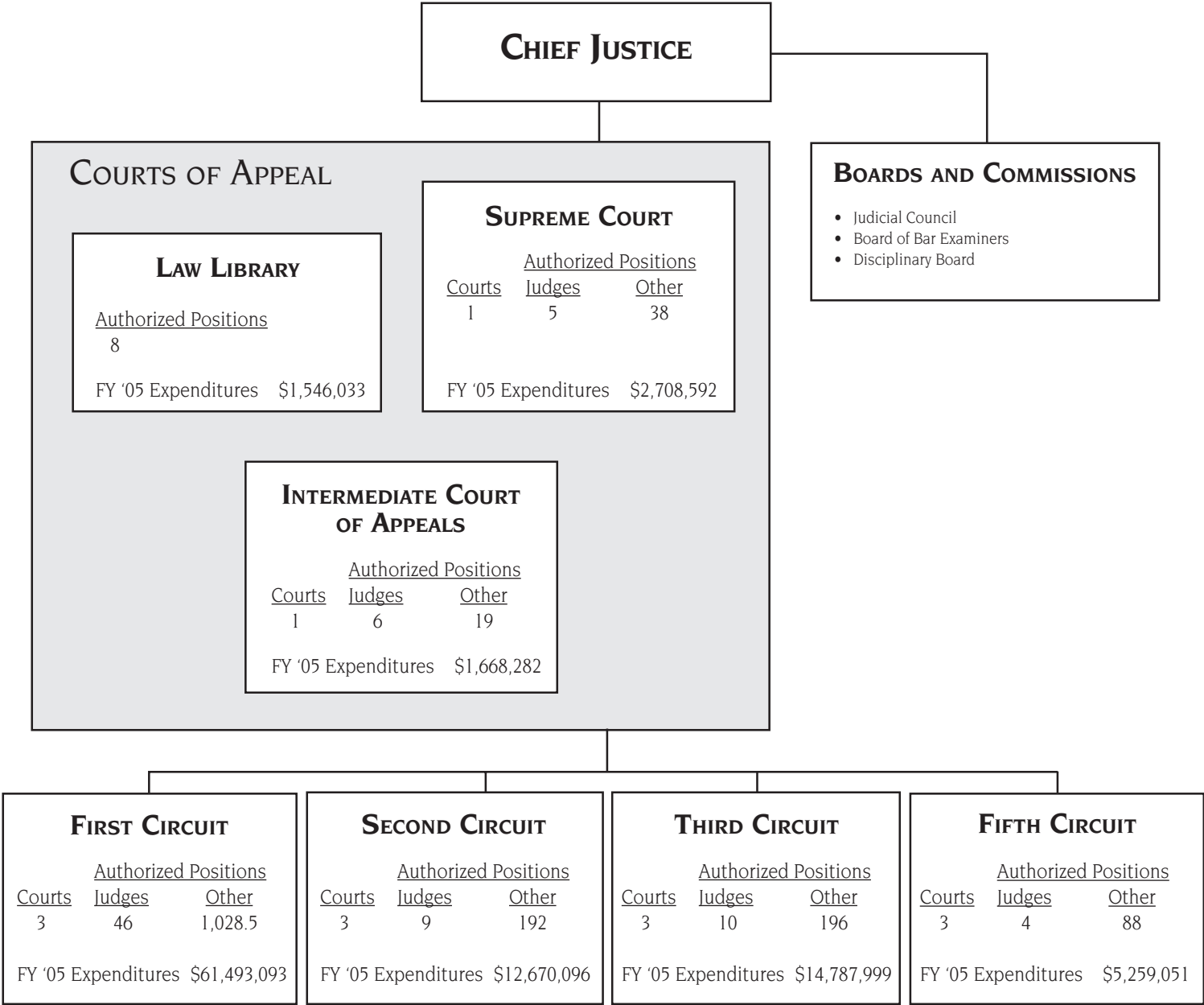
Time Capsule Buried by King Found

When King Kamehameha V ceremonially placed the cornerstone for Ali'iōlani Hale in 1872, he also buried a time capsule containing pictures of the royal family, Hawaiian postage stamps, island newspapers and other items. Over the decades, however, the exact location of the casket-shaped capsule was forgotten.

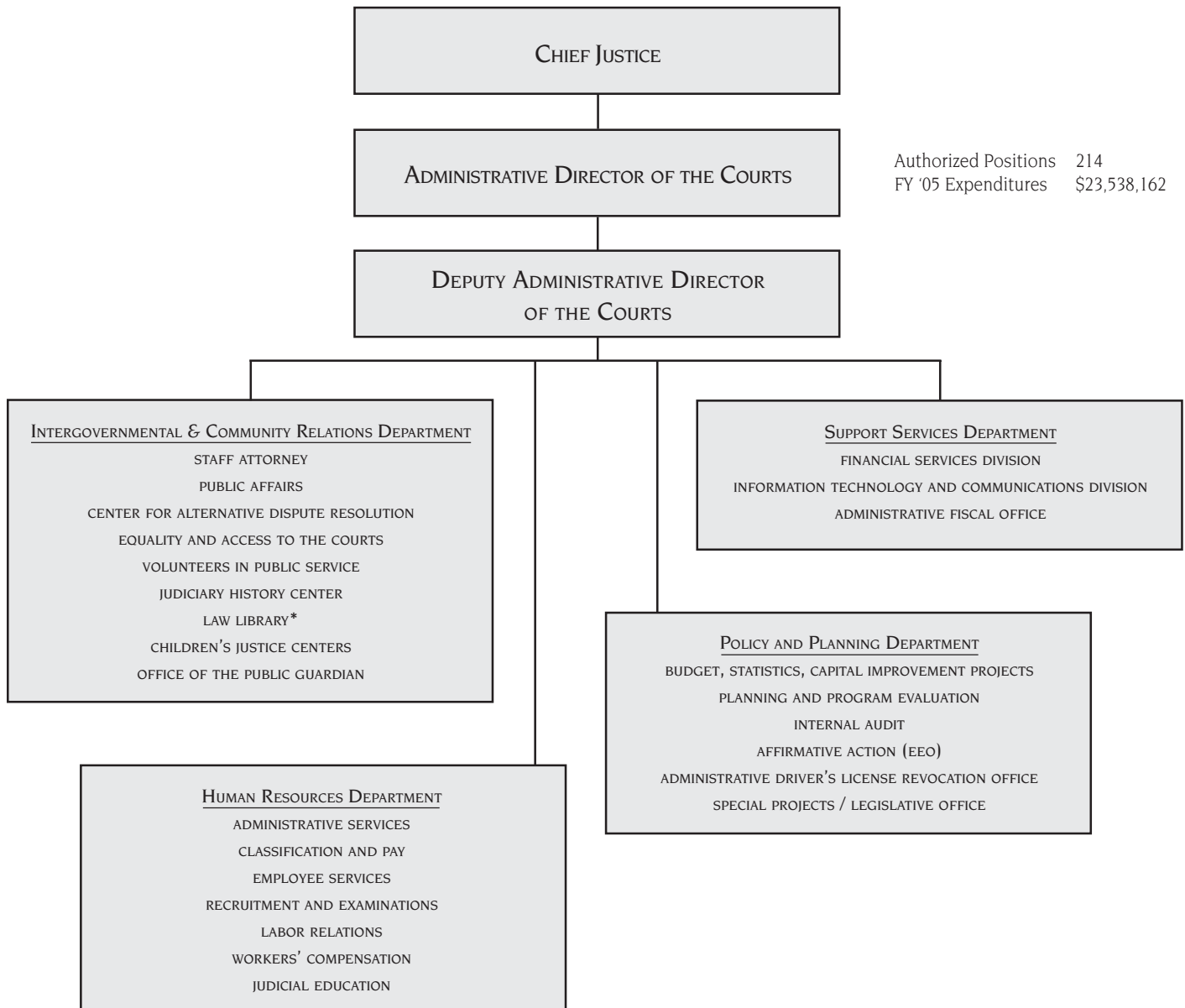
That mystery was solved on Dec. 10 while the Judiciary commemorated the monarch's 175th birthday.

As a training exercise, two scientists with the Joint POW/MIA Accounting Command at Hickam Air Force Base used ground-penetrating radar to quickly locate what they believe to be the capsule. The high-tech equipment is normally used to find the remains of American military personnel.

Structure of the Court System



Structure of the Office of the Administrative Director of the Courts



* Funding reflected under Courts of Appeal

New Judicial Appointments



Judge Richard T. Bissen, Jr.

April 29, 2005 – April 28, 2015

Judge Richard T. Bissen, Jr.

Governor Linda Lingle named Richard Thomas Bissen, Jr. as a Second Circuit judge. He previously served as interim director of the state Department of Public Safety. Prior to that, as first deputy attorney general for the state, he oversaw improvements to the Hawai'i Youth Correctional Facility. Judge Bissen was a Maui County prosecuting attorney, a supervising deputy prosecutor and a partner in the firm of Cardoza, Fukuoka and Bissen. He also clerked for retired Second Circuit Judge Richard R. Komo. He graduated from the University of Hawai'i William S. Richardson School of Law.



Judge Jennifer L. Ching

June 24, 2005 – June 23, 2011

Judge Jennifer L. Ching

Chief Justice Moon appointed Jennifer L. Ching as a First Circuit District Family Court judge, filling the vacancy created by the retirement of Judge Allene Suemori. Judge Ching was previously a deputy prosecuting attorney with the City and County of Honolulu. She served as supervisor of the Juvenile Offender Team, which is responsible for reviewing and prosecuting all juvenile cases on O'ahu. Before joining the Department of the Prosecuting Attorney in 1982, she was in private practice. Judge Ching graduated from law school at Lewis & Clark College in Portland.



Judge Randal K.O. Lee

April 22, 2005 – April 21, 2015

Judge Randal K.O. Lee

Governor Lingle selected Randal K.O. Lee as a First Circuit judge to fill the vacancy created by the retirement of Judge Sandra Simms. Prior to his appointment, Judge Lee served since 1982 as a deputy prosecuting attorney for the City and County of Honolulu. He previously was an attorney in the Appellate Branch and Family Court Trials Branch of the Office of the Public Defender, and served as a law clerk for the U.S. District Court and the California Court of Appeals. Judge Lee graduated from the Southwestern University School of Law in Los Angeles.

New Judicial Appointments

Judge Edwin C. Nacino

Chief Justice Moon appointed Edwin C. Nacino as a First Circuit District Court judge, filling the vacancy created by the appointment of Judge Bert Ayabe to the Circuit Court. Judge Nacino was a partner with Roeca Louie & Hiraoka, and was also employed by the Law Office of James T. Wong, the Corporation Counsel. He was a prosecuting attorney for the City and County of Honolulu, served as a law clerk for Judges Ronald Greig and Wendell Huddy, and was a Honolulu police officer for eight years. He graduated from the University of Hawai'i William S. Richardson School of Law.



Judge Edwin C. Nacino
May 6, 2005 – May 5, 2011

Judge Elizabeth A. Strance

Governor Lingle appointed Elizabeth Ann “Betsy” Strance as a Third Circuit judge in the newly created Division 4 in Kona. She had served since 1999 as a per diem judge for the Third Circuit District and Family Courts and was also a partner in the law firm of Strance and Nakoa. Judge Strance was previously a partner with the Goodsill Anderson Quinn and Stifel law firm, and was an associate with the law firms of Peterson and Gravelle and Greely Walker and Kowen. Judge Strance graduated from the law school at Lewis & Clark College in Portland.



Judge Elizabeth A. Strance
March 31, 2005 – March 30, 2015

Judge Kathleen N.A. Watanabe

Governor Lingle appointed Kathleen N.A. Watanabe as a Fifth Circuit judge. She filled the vacancy created by the retirement of Judge Clifford Nakea. Judge Watanabe previously served as director of the state Department of Human Resources Development and as a supervising deputy attorney general for the Employment Law Division of the Department of the Attorney General. She was also a Fifth Circuit per diem judge and a former attorney for Kaua'i County. Judge Watanabe graduated from the University of Hawai'i William S. Richardson School of Law.



Judge Kathleen N.A. Watanabe
August 17, 2005 – August 16, 2015

Courts of Appeal

The Judiciary's appellate level is composed of the Supreme Court and the Intermediate Court of Appeals (ICA). The ICA hears appeals from all trial courts and specific state boards and agencies.

Generally, cases assigned to the Supreme Court involve the formulation and development of the law, while cases assigned to the ICA involve possible trial court error or the application of settled law. An ICA decision may be reviewed by the Supreme Court upon request by any party, though the Supreme Court may exercise its discretion in accepting the matter.

Members of the Supreme Court and ICA are appointed to initial ten-year terms by the Governor. The Governor selects appointees from a list of not less than four and not more than six names submitted by the Judicial Selection Commission. All appointments must be confirmed by the State Senate.

To be considered for appointment, a person must be a resident and a citizen of the state and of the United States and licensed to practice law by the Supreme Court of Hawai'i for not less than ten years preceding their nomination. Justices and judges may be retained by the Judicial Selection Commission, but must retire at age 70.

Courts of Appeal

ACTIONS FILED

There were 723 primary cases filed in the Courts of Appeal during the 2004-05 fiscal year – 668 appeals and 55 original proceedings.

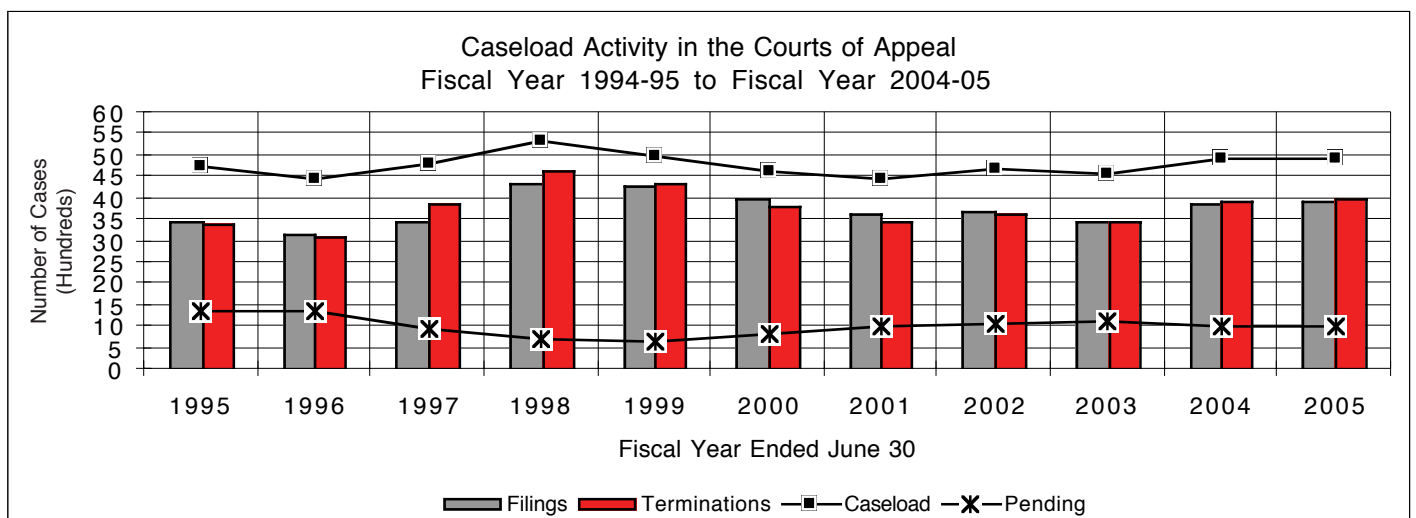
Supplemental proceedings, which arise out of primary cases, are comprised of motions, special stipulations and applications for certiorari. In fiscal year 2004-05, 3,206 supplemental proceedings were filed in the Courts of Appeal.

STATUS OF PENDING CASES

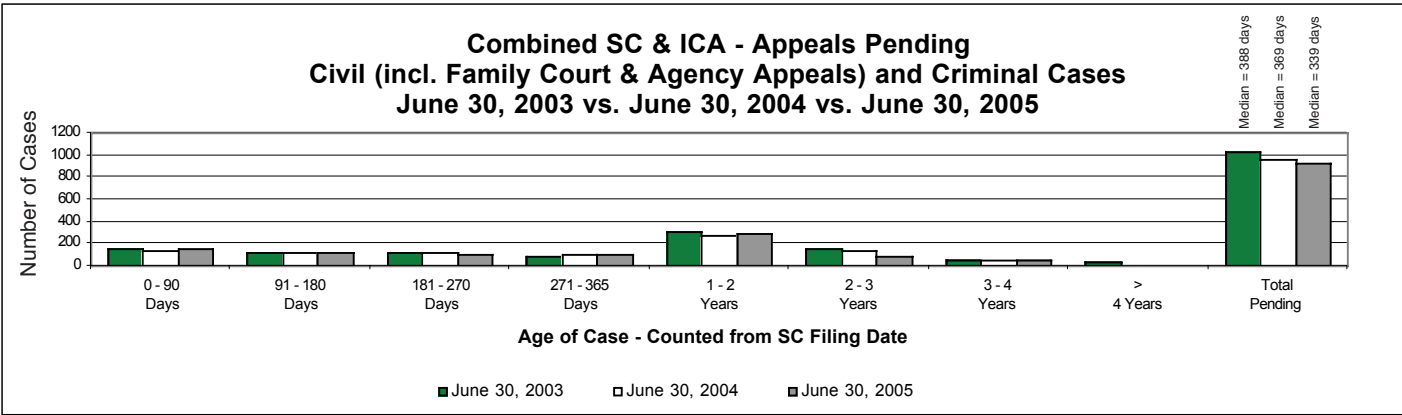
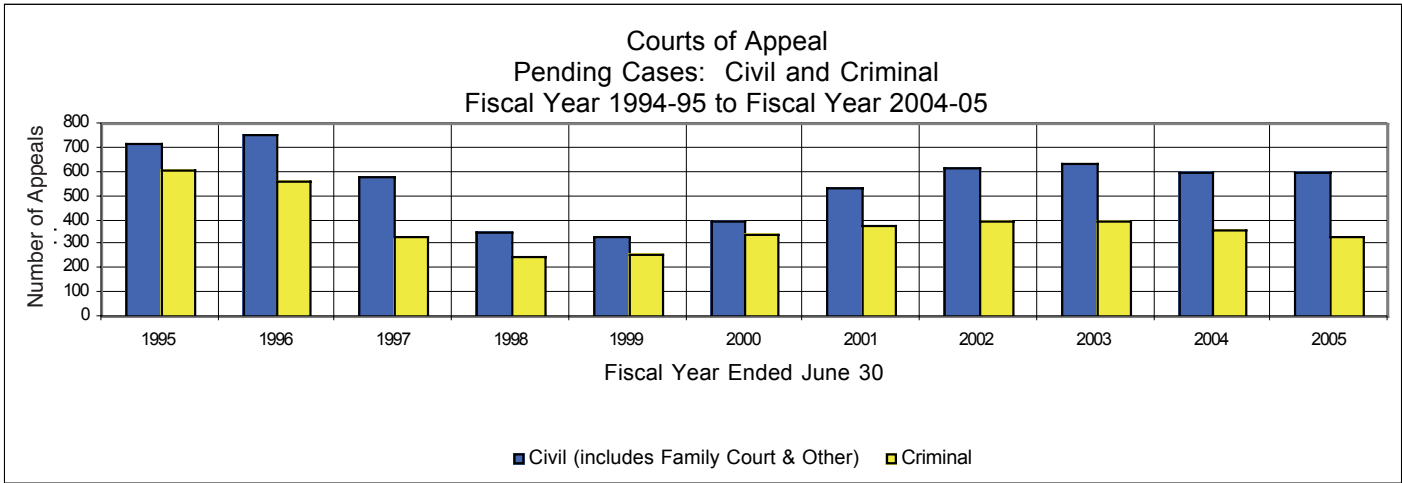
There were 942 primary cases and 42 supplemental proceedings pending in the Courts of Appeal at the end of the fiscal year. Of the 984 pending cases, 54% were being briefed, 39% were ready to be scheduled for hearing or, in the case of supplemental proceedings, ready and awaiting decision without further hearing, and 7% had been taken under advisement and were awaiting decision.

TERMINATIONS

The Courts of Appeal terminated 753 primary cases during fiscal year 2004-05, compared to 814 primary cases terminated during the previous fiscal year. Terminations of supplemental proceedings increased from 3,106 last year to 3,216 this year.



Courts of
Appeal



Supreme Court

STRATEGIC MISSION

The mission of the Supreme Court is to provide timely disposition of cases, including resolution of particular disputes and explication of applicable law. The Supreme Court also licenses and disciplines attorneys, disciplines judges and makes rules of procedure for all Hawai'i courts.

COURT DESCRIPTION

The Supreme Court is the state's highest court. Its decisions are binding on all other Hawai'i courts.

The Supreme Court reviews decisions of the lower courts in which appeals have been allowed. Cases that are reviewed by appeal have been initiated in either a trial court or an agency. The Supreme Court has original jurisdiction in proceedings for extraordinary relief in the nature of mandamus, certiorari and prohibition, and in habeas corpus proceedings.

Each appeal is decided on the basis of the written record. In some cases, the court may hear oral arguments. The court takes no evidence, except in original proceedings. All five justices hear each case.

The members of the Supreme Court are Chief Justice Ronald T.Y. Moon and Associate Justices Steven H. Levinson, Paula A. Nakayama, Simeon R. Acoba, Jr. and James E. Duffy, Jr.

Members of the Supreme Court are appointed to initial ten-year terms by the Governor. The Governor selects appointees from a list of not less than four and not more than six names submitted by the Judicial

Selection Commission. All appointments must be confirmed by the State Senate. To be considered for appointment, a person must be a resident and a citizen of the state and of the United States and licensed to practice law by the Supreme Court of Hawai'i for not less than ten years preceding their nomination. Justices may be retained by the Judicial Selection Commission, but must retire by age 70.

In addition to its appellate functions, the Supreme Court is also responsible for formulating court rules, licensing and disciplining attorneys and determining judicial fitness.

Chief Justice Moon and the Supreme Court are assisted by committees of lawyers and non-lawyers and by staff. The Judicial Council, a citizens' group, provides advice about the administration of justice. The Board of Examiners considers the qualifications of those seeking to practice law in the state.

The Commission on Judicial Conduct reviews complaints against judges and recommends discipline to the Supreme Court. The Office of Disciplinary Counsel investigates complaints against lawyers and recommends appropriate discipline to the Supreme Court.

The Supreme Court staff attorney heads a team of four attorneys who assist the Supreme Court in processing its work.

The Chief Justice is responsible for the administration of all courts in the state and appoints an administrative director of the courts to manage the non-judicial aspects of the Judiciary.

Supreme Court

ACTIONS FILED

During fiscal year 2004-05, 721 primary cases were filed in the Supreme Court. There were also 2,981 supplemental proceedings filed before the Supreme Court.

TERMINATIONS

Terminations of primary cases decreased from last fiscal year – 880 cases to 778. These included 309 cases assigned to the Intermediate Court of Appeals.

STATUS OF PENDING CASES

At the end of the fiscal year, 597 primary cases and 25 supplemental proceedings were pending. All pending supplemental proceedings were complete and awaiting decision.

JUSTICES AND THEIR TERMS

CHIEF JUSTICE RONALD T.Y. MOON

March 31, 2003 - March 30, 2013

ASSOCIATE JUSTICE STEVEN H. LEVINSON

April 7, 2002 - April 6, 2012

ASSOCIATE JUSTICE PAULA A. NAKAYAMA

April 22, 2003 - April 21, 2013

ASSOCIATE JUSTICE SIMEON R. ACOBA, JR.

May 19, 2000 - May 18, 2010

ASSOCIATE JUSTICE JAMES E. DUFFY, JR.

June 27, 2003 - June 26, 2013

Intermediate Court of Appeals

STRATEGIC MISSION

The mission of the Intermediate Court of Appeals (ICA) is to provide timely disposition of appeals from trial courts and state agencies, including resolution of particular disputes and explication of the law for the benefit of the litigants, the bar and the public.

COURT DESCRIPTION

The second highest court in the state, the ICA shares concurrent jurisdiction with the Supreme Court in reviewing legal matters brought before the Courts of Appeal. The ICA's cases are assigned by the Supreme Court. Usually the ICA reviews trial court decisions for errors, while the Supreme Court reviews matters involving formulation of the law. The ICA has the authority to reverse, remand, modify or affirm decisions in all trial courts. Its decisions are subject to review by the Supreme Court.

The ICA is comprised of six judges, who sit in panels of three.

Intermediate Court of Appeals

ACTIONS FILED

A total of 311 primary cases and 225 supplemental proceedings were assigned to the ICA in fiscal year 2004-05. Primary cases are assigned from the Supreme Court, while supplemental proceedings may be filed directly with the ICA or transferred from the Supreme Court.

TERMINATIONS

During fiscal year 2004-05, the ICA terminated 59% of its total caseload. This figure includes 284 primary cases and 230 supplemental proceedings.

STATUS OF PENDING CASES

At the end of the 2004-05 fiscal year, 345 primary cases and 17 supplemental cases were pending, representing 41% of the total caseload for the year.

JUDGES AND THEIR TERMS

CHIEF JUDGE JAMES S. BURNS

May 14, 2002 - May 13, 2012

ASSOCIATE JUDGE CORINNE K.A. WATANABE

May 11, 2002 - May 10, 2012

ASSOCIATE JUDGE JOHN S.W. LIM

June 1, 1999 - May 31, 2009

ASSOCIATE JUDGE DANIEL R. FOLEY

October 2, 2000 - October 1, 2010

ASSOCIATE JUDGE CRAIG H. NAKAMURA

April 8, 2004 - April 7, 2014

ASSOCIATE JUDGE ALEXA D.M. FUJISE

June 10, 2004 - June 9, 2014

Land Court

DESCRIPTION

The Land Court is a statewide court of record with exclusive jurisdiction over all applications for the registration of title to land and easements or rights in land held and possessed in fee simple within the state. It has the power to hear and determine all questions arising upon applications as they come before it under Hawai'i Revised Statutes, Chapter 501, subject to the rights of appeal.

ACTIONS FILED

In fiscal year 2004-05, 10 cases were filed in the Land Court. Combined with the 27 cases pending at the end of the last fiscal year, the Land Court handled a total caseload of 37 cases.

TERMINATIONS AND PENDING CASES

Five cases were terminated during fiscal year 2004-05, leaving 32 cases pending at the start of the new fiscal year.

Tax Appeal Court

DESCRIPTION

The Tax Appeal Court is a statewide court with jurisdiction over disputes concerning property, excise, liquor, income and insurance taxes.

The Tax Appeal Court is located in Honolulu and convenes in the other circuits (Hawai'i, Maui and Kaua'i) at least once each year to hear disputes involving real property taxes.

ACTIONS FILED

In fiscal year 2004-05, 102 cases were filed in the Tax Appeal Court. Combined with the 508 pending cases at the end of the last fiscal year, the Tax Appeal Court's total caseload was 610 cases.

TERMINATIONS AND PENDING CASES

The Tax Appeal Court terminated a total of 103 cases, or 17% of the court's caseload, during the 2004-05 fiscal year. At the close of the fiscal year, 507 cases remained pending.

Trial Courts

Hawaii's trial level is comprised of Circuit Courts and District Courts. Family Courts are included in the Circuit Courts. Hawaii's trial courts function in four circuits that correspond approximately to the geographical areas served by the counties.

The First Circuit serves the City and County of Honolulu.

The Second Circuit serves the County of Maui, which includes the islands of Maui, Moloka'i and Lāna'i.

The Third Circuit, divided into the districts of Hilo and Kona, administers the County of Hawaii.

The Fourth Circuit is no longer used as a circuit designation. The Third and Fourth Circuits merged in 1943.

The Fifth Circuit serves the County of Kaua'i, which includes the islands of Kaua'i and Ni'ihau.

Circuit Courts

STRATEGIC MISSION

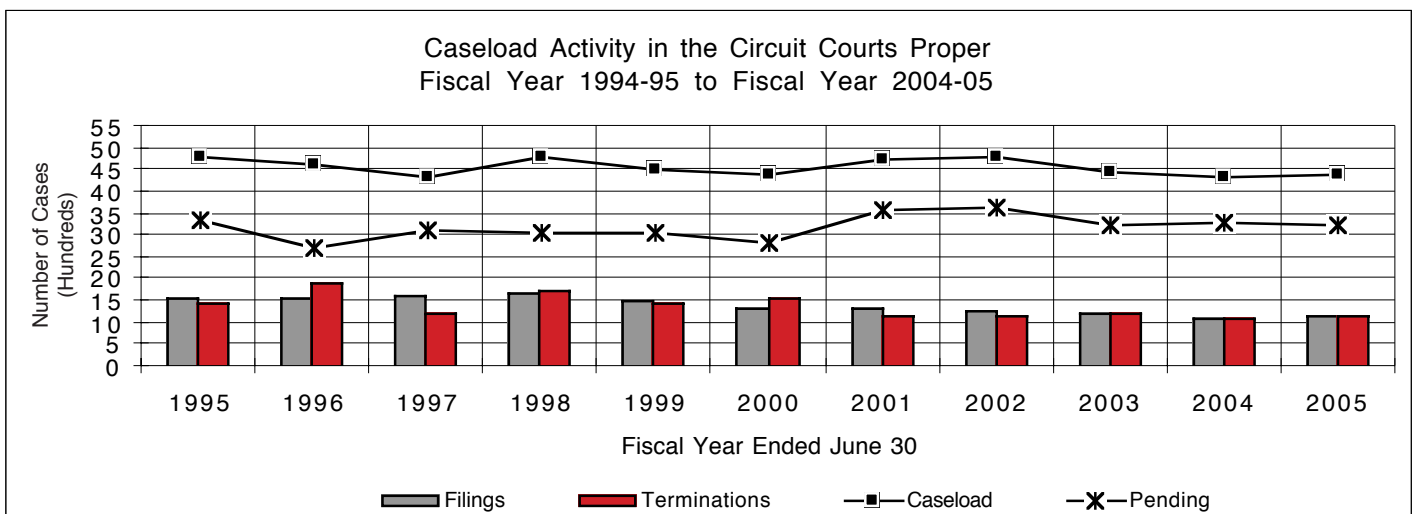
The mission of the Circuit Court is to expeditiously and fairly adjudicate or resolve all matters within its jurisdiction in accordance with the law.

DESCRIPTION

All jury trials are held in the Circuit Courts, which have general jurisdiction in civil and criminal cases. They also have exclusive jurisdiction in probate, guardianship and criminal felony cases, as well as civil cases where the contested amount exceeds \$20,000. Circuit Courts share concurrent jurisdiction

with District Courts in civil non-jury cases that specify amounts between \$10,000 and \$20,000. Additional cases dispensed by the Circuit Courts include mechanics' liens and misdemeanor violations transferred from the District Courts for jury trials.

Circuit Court judges are appointed to ten-year terms by the Governor from a list of not less than four and not more than six nominees provided by the Judicial Selection Commission. The nominees are subject to confirmation by the State Senate.



Circuit Courts

ACTIONS FILED

Filings in the Circuit Courts proper totaled 11,530 cases in fiscal year 2004-05. Of the cases filed, 3,661, or 32%, were civil cases; and 4,828, or 42%, were criminal cases.

TERMINATIONS

During fiscal year 2004-05, the Circuit Courts terminated 11,652 cases.

STATUS OF PENDING CASES

At the end of the 2004-05 fiscal year, a total of 32,505 cases were pending in the Circuit Courts proper.

ADULT PROBATION DIVISIONS

Due to organizational restructuring at the Circuit Courts, the Adult Probation Reporting System is currently undergoing changes to handle both felony and misdemeanor cases. Therefore, data will not be available until modifications to the Adult Probation Reporting System are completed.

*Circuit Court Judges
and Their Terms*

FIRST CIRCUIT

KARL K. SAKAMOTO, 1ST DIVISION
June 1, 2000 - May 31, 2010

STEVEN S. ALM, 2ND DIVISION
May 14, 2001 - May 13, 2011

VICTORIA S. MARKS, 3RD DIVISION
May 26, 2004 - May 25, 2014

MARCIA J. WALDORF, 4TH DIVISION
June 18, 2002 - June 17, 2012

EDEN ELIZABETH HIFO, 5TH DIVISION
April 30, 2003 - April 29, 2013

MICHAEL D. WILSON, 6TH DIVISION
May 10, 2000 - May 9, 2010

RICHARD W. POLLACK, 7TH DIVISION
May 10, 2000 - May 9, 2010

RICHARD K. PERKINS, 8TH DIVISION
May 6, 2004 - May 5, 2014

VIRGINIA LEA CRANDALL, 9TH DIVISION
April 1, 2001 - March 31, 2011

RHONDA A. NISHIMURA, 10TH DIVISION
June 20, 2003 - June 19, 2013

KAREN S. S. AHN, 11TH DIVISION
May 10, 2000 - May 9, 2010

RANDAL K. O. LEE, 12TH DIVISION
April 22, 2005 - April 21, 2015

DEXTER D. DEL ROSARIO, 13TH DIVISION
April 15, 2004 - April 14, 2014

GARY W. B. CHANG, 14TH DIVISION
June 1, 1999 - May 31, 2009

KAREN N. BLONDIN, 15TH DIVISION
DEPUTY CHIEF JUDGE
CIVIL DIVISION
May 11, 2002 - May 10, 2012

PATRICK W. BORDER, 16TH DIVISION
April 8, 2004 - April 7, 2014

REYNALDO D. GRAULTY, 17TH DIVISION
March 5, 1999 - March 4, 2009

FRANCES Q. F. WONG, 18TH DIVISION
DEPUTY CHIEF JUDGE/
SENIOR FAMILY COURT JUDGE
May 11, 2002 - May 10, 2012

MICHAEL A. TOWN, 19TH DIVISION
April 30, 2003 - April 29, 2013

COLLEEN K. HIRAI, 20TH DIVISION
CHIEF JUDGE
May 6, 2004 - May 5, 2014

BERT I. AYABE, 21ST DIVISION
June 10, 2004 - June 9, 2014

SABRINA S. MCKENNA, 22ND DIVISION
June 30, 2005 - June 29, 2015

DERRICK H. M. CHAN, 23RD DIVISION
DEPUTY CHIEF JUDGE
CRIMINAL DIVISION
August 25, 2000 - August 24, 2010

Circuit Court Judges and Their Terms

SECOND CIRCUIT

SHACKLEY F. RAFFETTO, 1ST DIVISION
CHIEF JUDGE/SENIOR FAMILY COURT JUDGE
June 9, 2004 - June 8, 2014

JOEL E. AUGUST, 2ND DIVISION
June 10, 2002 - June 9, 2012

JOSEPH E. CARDOZA, 3RD DIVISION
June 24, 1999 - June 23, 2009

RICHARD T. BISSEN, JR., 4TH DIVISION
April 29, 2005 - April 28, 2015

THIRD CIRCUIT

GREG K. NAKAMURA, 1ST DIVISION
DEPUTY CHIEF JUDGE/
SENIOR FAMILY COURT JUDGE
April 18, 2004 - April 17, 2014

GLENN S. HARA, 2ND DIVISION
June 25, 2004 - June 24, 2014

RONALD IBARRA, 3RD DIVISION
CHIEF JUDGE
May 10, 1999 - May 9, 2009

ELIZABETH A. STRANCE, 4TH DIVISION
March 31, 2005 - March 30, 2015

FIFTH CIRCUIT

GEORGE M. MASUOKA, 1ST DIVISION
CHIEF JUDGE/SENIOR FAMILY COURT JUDGE
July 8, 1998 - July 7, 2008

KATHLEEN N. A. WATANABE, 2ND DIVISION
August 17, 2005 - August 16, 2015

Family Courts

STRATEGIC MISSION

The mission of the Family Court is to provide a fair, speedy, economical and accessible forum for the resolution of matters involving families and children.

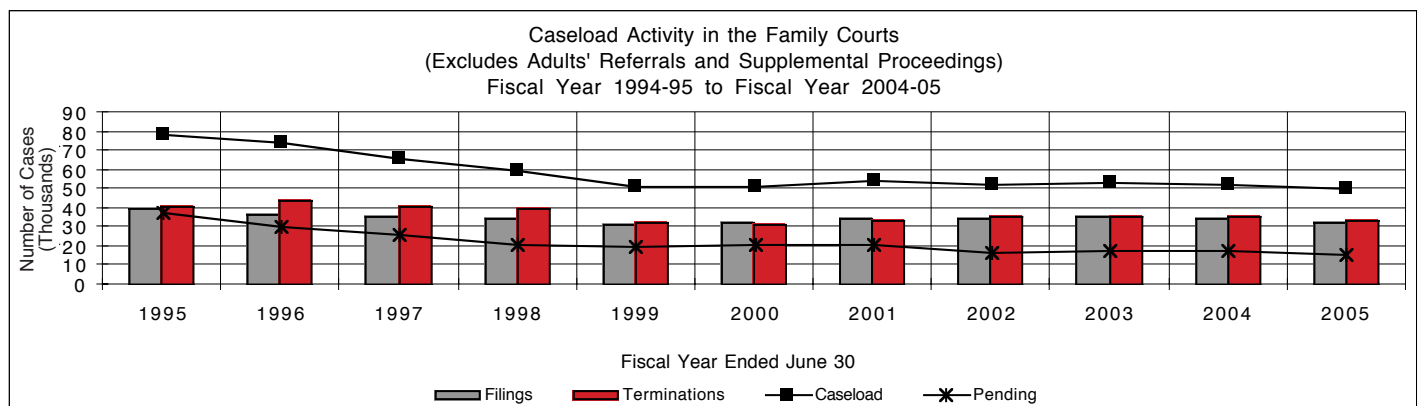
DESCRIPTION

The Family Courts were established by statute in 1965 to deal with virtually all legal problems impinging on Hawai'i's families and children.

The Family Court hears all legal matters involving children, such as delinquency, waiver, status offenses, abuse and neglect,

termination of parental rights, adoption, guardianships and detention. The Family Court also hears traditional domestic relations cases, including divorce, nonsupport, paternity, uniform child custody jurisdiction cases and miscellaneous custody matters.

District Family Court judges are appointed to six-year terms by the Chief Justice from a list of at least six names submitted for each opening by the Judicial Selection Commission, subject to confirmation by the State Senate.



Family Courts

ACTIONS FILED

A total of 32,446 cases were filed in the Family Courts in fiscal year 2004-05.

TERMINATIONS

Terminations totaled 33,949 in fiscal year 2004-05.

STATUS OF PENDING CASES

There were 15,931 cases pending at the end of fiscal year 2004-05.

Family Court Judges and Their Terms

FIRST CIRCUIT

FRANCES Q. F. WONG, FIRST CIRCUIT COURT
18TH DIVISION
DEPUTY CHIEF JUDGE/
SENIOR FAMILY COURT JUDGE
May 11, 2002 - May 10, 2012

PATRICK W. BORDER, FIRST CIRCUIT COURT
16TH DIVISION
April 8, 2004 - April 7, 2014

REYNALDO D. GRAULTY, FIRST CIRCUIT COURT
17TH DIVISION
March 5, 1999 - March 4, 2009

MICHAEL F. BRODERICK
June 6, 2003 - June 5, 2009

R. MARK BROWNING
June 6, 2003 - June 5, 2009

JENNIFER L. CHING
June 24, 2005 - June 23, 2011

KENNETH E. ENRIGHT
February 28, 2003 - February 27, 2009

CHRISTINE E. KURIYAMA
May 20, 2004 - May 19, 2010

LINDA K. C. LUKE
December 29, 2004 - December 28, 2010

PAUL T. MURAKAMI
June 7, 2002 - June 6, 2008

KAREN M. RADIUS
December 9, 2000 - December 8, 2006

ALLENE K. SUEMORI
Retired April 1, 2005

BODE A. UALE
October 27, 2004 - October 26, 2010

SECOND CIRCUIT

SHACKLEY F. RAFFETTO, SECOND CIRCUIT COURT
1ST DIVISION
CHIEF JUDGE/SENIOR FAMILY COURT JUDGE
June 9, 2004 - June 8, 2014

SIMONE C. POLAK
May 28, 2004 - May 27, 2010

GERONIMO VALDRIZ, JR.
May 26, 2000 - May 25, 2006

THIRD CIRCUIT

GREG K. NAKAMURA, THIRD CIRCUIT COURT
1ST DIVISION
DEPUTY CHIEF JUDGE/
SENIOR FAMILY COURT JUDGE
April 18, 2004 - April 17, 2014

ALEY K. AUNA, JR.
April 4, 2000 - April 3, 2006

BEN H. GADDIS
May 17, 2001 - May 16, 2007

TERENCE T. YOSHIOKA
April 28, 2000 - April 27, 2006

FIFTH CIRCUIT

GEORGE M. MASUOKA, FIFTH CIRCUIT COURT
1ST DIVISION
CHIEF JUDGE/SENIOR FAMILY COURT JUDGE
July 8, 1998 - July 7, 2008

CALVIN K. MURASHIGE
June 25, 2005 - June 24, 2011

District Courts

STRATEGIC MISSION

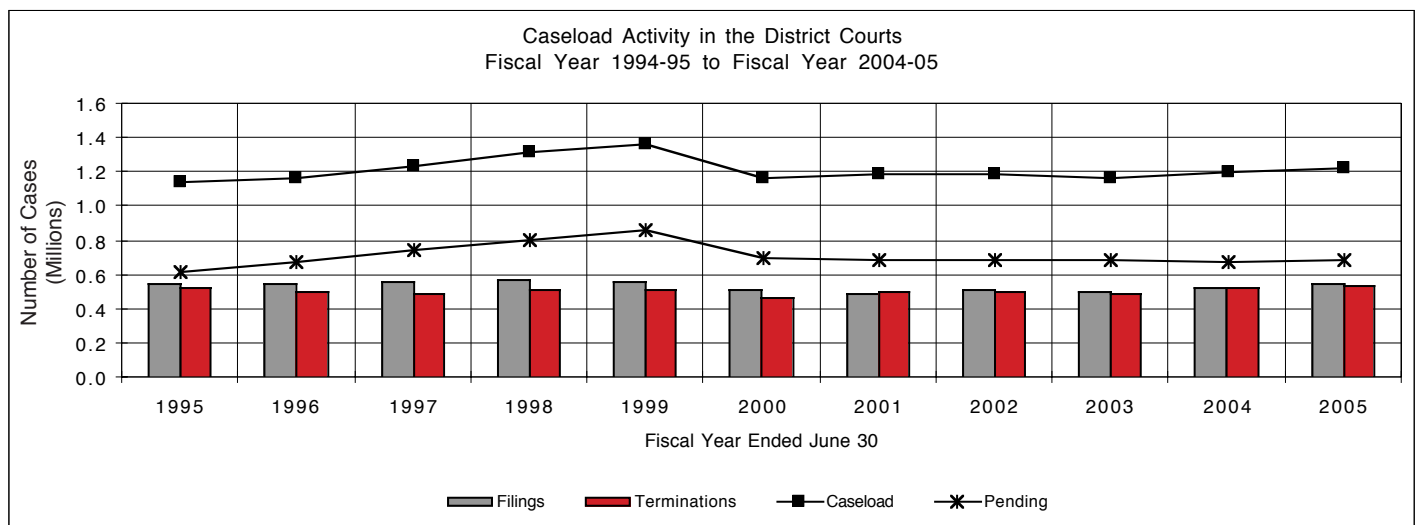
The mission of the District Court is to serve the people of Hawai'i through the fair and efficient adjudication and resolution of cases and controversies brought before it.

DESCRIPTION

The District Courts have exclusive jurisdiction over traffic infractions and summary possession or ejectment proceedings (landlord-tenant), regardless of the claim amount. The District Courts also have jurisdiction over non-jury trial civil cases where the debt, amount, damages or value of the property claimed does not exceed

\$20,000, or where the remedy sought is specific performance valued under \$20,000, criminal offenses punishable by fine or by imprisonment not exceeding one year, cases arising from violations of a county ordinance, and petitions for restraining orders for relief from and for injunctions against harassment.

District Court judges are appointed to six-year terms by the Chief Justice from a list of at least six names submitted for each opening by the Judicial Selection Commission, subject to confirmation by the State Senate.



District Courts

ACTIONS FILED

During the 2004-05 fiscal year, 543,322 cases were filed in the District Courts. Traffic violation cases constituted the bulk of the filings, accounting for 87% of all filings. Civil actions represented approximately 3% of filings, criminal actions 9% and other violations 1%.

TERMINATIONS

A total of 539,251 cases were terminated in the District Courts during the fiscal year.

PENDING CASES

There were 683,212 cases pending at the end of fiscal year 2004-05.

District Court Judges and Their Terms

FIRST CIRCUIT

COLETTE Y. GARIBALDI
DEPUTY CHIEF JUDGE
February 28, 2003 - February 27, 2009

WILLIAM A. CARDWELL
May 20, 2004 - May 19, 2010

HILARY BENSON GANGNES
May 22, 2002 - May 21, 2008

LESLIE ANN HAYASHI
November 5, 2002 - November 4, 2008

GERALD H. KIBE
January 6, 2001 - January 5, 2007

FAYE M. KOYANAGI
June 10, 2003 - June 9, 2009

LONO J. LEE
June 10, 2003 - June 9, 2009

DAVID W. LO
August 23, 2000 - August 22, 2006

CHRISTOPHER P. MCKENZIE
May 22, 2002 - May 21, 2008

RUSSEL S. NAGATA
October 5, 2004 - October 4, 2010

EDWIN C. NACINO
May 6, 2005 - May 5, 2011

CLARENCE A. PACARRO
June 7, 2002 - June 6, 2008

BARBARA P. RICHARDSON
May 5, 2000 - May 4, 2006

FA'AUUGA TO'OTO'O
December 9, 2000 - December 8, 2006

SECOND CIRCUIT

RHONDA I. L. LOO
DEPUTY CHIEF JUDGE
May 1, 2003 - April 30, 2009

REINETTE W. COOPER
May 7, 2001 - May 6, 2007

DOUGLAS H. IGE
June 28, 2002 - June 27, 2008

THIRD CIRCUIT

MATTHEW S. K. PYUN, JR.
DEPUTY CHIEF JUDGE
May 14, 2003 - May 13, 2009

JOSEPH P. FLORENDO, JR.
November 3, 2004 - November 2, 2010

BARBARA T. TAKASE
May 26, 2004 - May 25, 2010

FIFTH CIRCUIT

CALVIN K. MURASHIGE
DEPUTY CHIEF JUDGE
June 25, 2005 - June 24, 2011

TRUDY K. SENDA
May 4, 2001 - May 3, 2007

Per Diem Judges

FIRST CIRCUIT

Marilyn Carlsmith
Valerie W.H. Chang
Gale L.F. Ching
Darryl Y. C. Choy
Lawrence R. Cohen
James H. Dannenberg
Paula Devens-Matayoshi
Philip M. Doi
Peter C.K. Fong
Lenore K.J.H. Lee
Wilson M.N. Loo
Michael A. Marr
Linda S. Martell
Patricia Ann McManaman
William J. Nagle, III
Alvin K. Nishimura
Blake T. Okimoto
Nancy Ryan
Yvonne R. Shinmura
Randal I. Shintani
Shawna J. Sodersten
Peter T. Stone
Clyde E. Sumida
Matthew J. Viola
William K. Wallace, III
Timothy David Woo, Jr.
Gregg Young

SECOND CIRCUIT

Jan K. Apo
Michelle L. Drewyer
Ruby A. Hamili
Paul L. Horikawa
Mary Blaine Johnston
Barclay E. MacDonald
Jack R. Naiditch
Lloyd A. Poelman
Eric G. Romanchak
Douglas J. Sameshima

THIRD CIRCUIT

Karen Napua Brown
William S. Chillingworth
Victor M. Cox
Colin L. Love
Wayne C. Metcalf, III
John P. Moran
Jeanne L. O'Brien

FIFTH CIRCUIT

Max W.J. Graham, Jr.
Walton D.Y. Hong
Joseph N. Kobayashi
Gerald S. Matsunaga
Frank D. Rothschild

Support Services

STRATEGIC MISSION

The mission of the Office of the Administrative Director of the Courts is to promote the administration of justice in Hawai'i by providing professional, responsive administrative support to the Chief Justice, the courts and Judiciary programs and to expedite, facilitate and enhance the mission of the Judiciary.

ADMINISTRATION

The Office of the Administrative Director of the Courts has the primary responsibility for daily operations of the court system. The Administrative Director is appointed by the Chief Justice with the approval of the Supreme Court, and is assisted by the Deputy Administrative Director.

The Administrative Director also coordinates the Judiciary's annual presentations to the Legislature, both for the Judiciary budget and for changes in laws relating to operation of the judicial system.

Administrative programs are divided into four departments. The Intergovernmental and Community Relations Department includes: Staff Attorney, Public Affairs, King Kamehameha V Judiciary History Center, Children's Justice Centers, Law Library, Center for Alternative Dispute Resolution, Equality and Access to the Courts, Office of the Public Guardian and Volunteers in Public Service. The Support Services Department includes: Financial Services, Information Technology and Communications and Admin Fiscal. The Policy and Planning Department includes: Budget and Statistics, Planning and Program Evaluation, Internal Audit, Affirmative Action/EEO, Administrative Driver's License Revocation Office and Special Projects/Legislative Office. The Human Resources Department includes: Administrative Services, Classification and Pay, Employee Services, Labor Relations, Recruitment and Examinations, Workers' Compensation and Judicial Education and Resource Development.

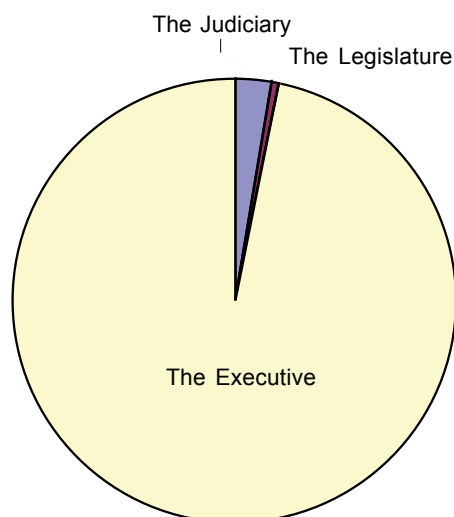
Financial Resources

Appropriations for the Hawai'i State Judiciary are made by the Legislature on a statewide basis, with each fiscal year beginning July 1 and ending June 30. Both the operating and capital improvements budgets of the Judiciary are legislatively determined each biennium with operating monies allocated from the State General and Special Funds and capital improvement monies from the State Capital Project Fund.

Combined, the State General and the Capital Project Funds represent over 96 percent of the funding source of all Judiciary expenditures. The Legislature appropriated \$119,074,849 from the State General Fund for operations during the current fiscal year, and \$42,395,000 to the Judiciary from the State Capital Project Fund. Other operating monies come from federal funds, trust funds and special revenue funds, such as the Driver Education and Training Fund.

Financial Resources

THE JUDICIARY OPERATING FUNDS FISCAL YEARS 2004-2007 BUDGET SUMMARY				
PROGRAM	FY 2004 Actual Expenditures	FY 2005 Actual Expenditures	Biennium Budget Appropriations	
			FY 2006	FY 2007
JUD 101 - COURTS OF APPEAL				
General Fund	5,819,645	5,903,213	6,470,375	6,604,007
Revolving Fund	24,431	19,694	243,261	243,261
JUD 310 - FIRST CIRCUIT				
General Fund	56,992,340	58,814,362	64,338,777	66,419,434
Special Fund	2,562,872	2,728,731	3,438,324	3,515,326
JUD 320 - SECOND CIRCUIT				
General Fund	11,071,923	12,670,096	13,511,298	13,799,759
Special Fund	0	150,000	175,000	0
JUD 330 - THIRD CIRCUIT				
General Fund	13,393,750	14,787,999	15,412,390	15,806,802
JUD 350 - FIFTH CIRCUIT				
General Fund	4,696,931	5,259,051	6,063,766	6,439,923
JUD 601 - ADMINISTRATION				
General Fund	18,482,859	19,458,207	18,976,858	18,841,893
Special Fund	2,683,237	4,079,955	5,759,711	5,762,237
Revolving Fund	0	0	100,000	100,000
TOTALS				
General Fund	110,457,448	116,892,928	124,773,464	127,911,818
Special Fund	5,246,109	6,958,686	9,373,035	9,277,563
Revolving Fund	24,431	19,694	343,261	343,261



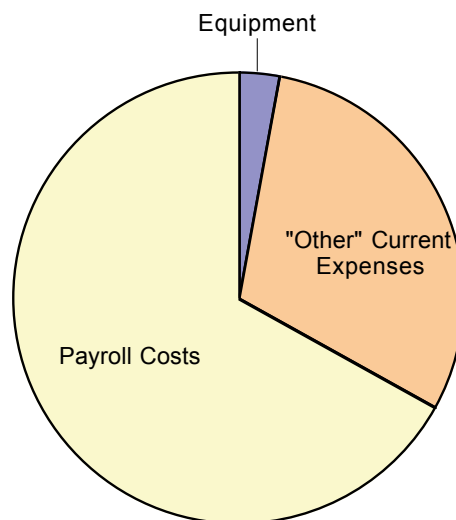
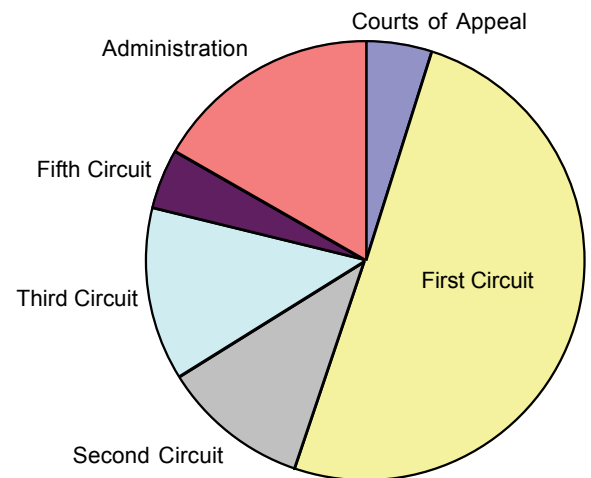
TOTAL STATE GOVERNMENT APPROPRIATIONS FROM STATE GENERAL FUND FISCAL YEAR 2004-05

The Judiciary	2.80%	\$ 119,074,849
The Legislature	.67%	28,559,614
The Executive	96.53%	4,108,970,374
Total		\$ 4,256,604,837

Financial Resources

STATE GENERAL FUND EXPENDITURES BY COURT ELEMENT FISCAL YEAR 2004-05

Courts of Appeal	5.0%	\$ 5.9 million
First Circuit	50.3%	58.8 million
Second Circuit	10.8%	12.7 million
Third Circuit	12.7%	14.8 million
Fifth Circuit	4.5%	5.3 million
Administration	16.7%	19.4 million
Total		\$ 116.9 million



STATE GENERAL FUND EXPENDITURES BY COST CATEGORY FISCAL YEAR 2004-05

Equipment	3%	\$ 3.9 million
"Other" Current Expenses	30%	35.0 million
Payroll Costs	67%	78.0 million
Total		\$ 116.9 million

List of Available Judiciary Publications

IF YOU ARE INTERESTED IN THE FOLLOWING PUBLICATIONS, PLEASE CONTACT:

The Judiciary Public Affairs Office
Ali'iōlani Hale
417 South King Street
Room 206-C
Honolulu, Hawai'i 96813

Internet site: www.courts.state.hi.us

PUBLICATIONS

Are You Interested in Being a Court Interpreter?
Attorney-Client Relations Program
Center for Alternative Dispute Resolution
Children and Divorce
Children's Justice Center of O'ahu
Commission on Judicial Conduct
Community Mediation
Community Service Sentencing Branch
Court Orientation Tours
Disciplinary Complaints Against Lawyers
Dispute Resolution Procedures
Going to Small Claims Court? What You Should Know About Mediation
Before You File Your Claim or Go to Small Claims Court.
Going to Probate Court? What You Should Know About Mediation Before
You Take Your Probate Case to Trial.
Judiciary History Center
Lawline
Lawyer Referral Information Service
Mediation Times
Selecting a Mediator
Selecting a Facilitator for Your Meeting
Speakers Bureau Program
The Judiciary State of Hawai'i 2005 Annual Report
The Judiciary State of Hawai'i 2005 Statistical Supplement
The Judiciary Welcomes Volunteers
What is Facilitation?
When You Have Disputes, There are Choices!
Your Guide to Small Claims Court
Your Guide to Regular Claims Court

VIDEOS

*An Informational Video on Deferred Acceptance of Guilty (DAG) and
Deferred Acceptance of No Contest (DANC) Pleas (TRT 18:00)*
Broken Scales: Justice Under Influence (TRT 18:17)
Informational Video on Small Claims (TRT 16:18)
Informational Video on Traffic Violations (TRT 15:15)
Jury Orientation Video (TRT 18:25)
Mediation: An Alternative to Court (TRT: 18:00)
The Purple Family: Divorce Education Video (TRT 23:52)