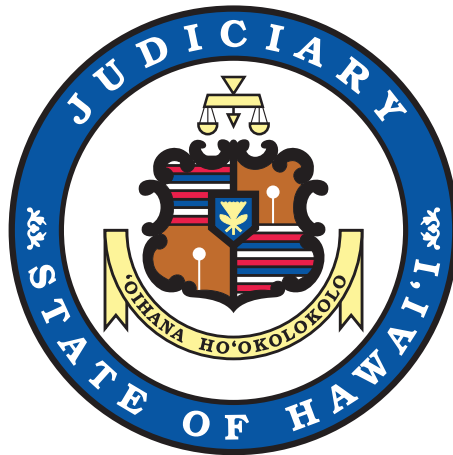


---

# The Judiciary State of Hawai'i



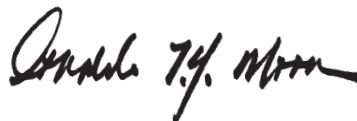
2009 Annual Report

*The mission of the Judiciary,  
as an independent branch of  
government, is to administer  
justice in an impartial, efficient  
and accessible manner in  
accordance with the law.*

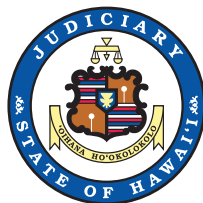
I am pleased to present our 2009 Annual Report that details the work of the Judiciary during the past year. As an independent branch of government, the Judiciary's role is to administer justice in an impartial manner, free from outside influences.

This report reflects the dedication of the men and women who work in the court system. Each day, these employees strive to fulfill our mission, knowing that what they do may have far-reaching impacts upon people's lives. I am proud of our employees' work and extend to them my heartfelt thanks and appreciation. I also thank another valuable part of our Judiciary family—the many volunteers who unselfishly give of their time and talent to serve the people of Hawai'i.

On behalf of the Judiciary, I also extend our sincere appreciation to the Legislature for its continued support of our budgetary needs and legislative initiatives. I also wish warm *aloha* to Governor Linda Lingle, her cabinet and members of the Legislature. We pledge our continued commitment to working with you to build a dynamic and progressive judicial system. Our mutual quest for excellence depends on our cooperative and collaborative efforts.



Ronald T. Y. Moon  
Chief Justice  
Hawai'i Supreme Court





# Table of Contents



Photos above: The Hilo Judiciary Complex, named “Hale Kaulike” (House of Justice), was opened to the public on March 30, 2009.

## STRUCTURE OF THE JUDICIARY

Court System 1

Administrative System 2

JUDICIAL APPOINTMENTS 3

JUDICIAL DEPARTURES 4

COURTS OF APPEAL 5

Supreme Court 7

Intermediate Court of Appeals 9

Land Court 11

Tax Appeal Court 11

TRIAL COURTS 12

Circuit Courts 13

Family Courts 17

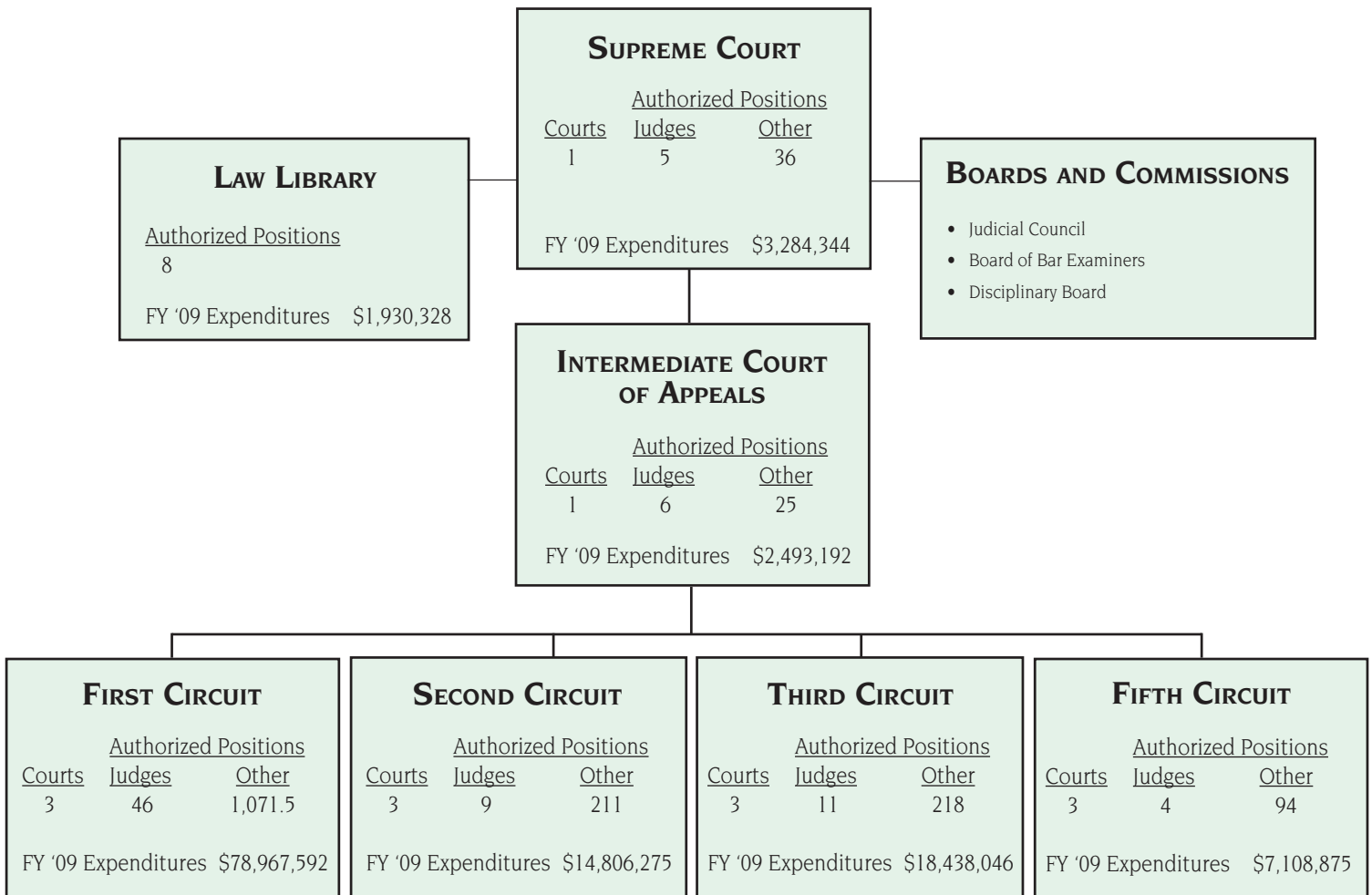
District Courts 20

Per Diem Judges 23

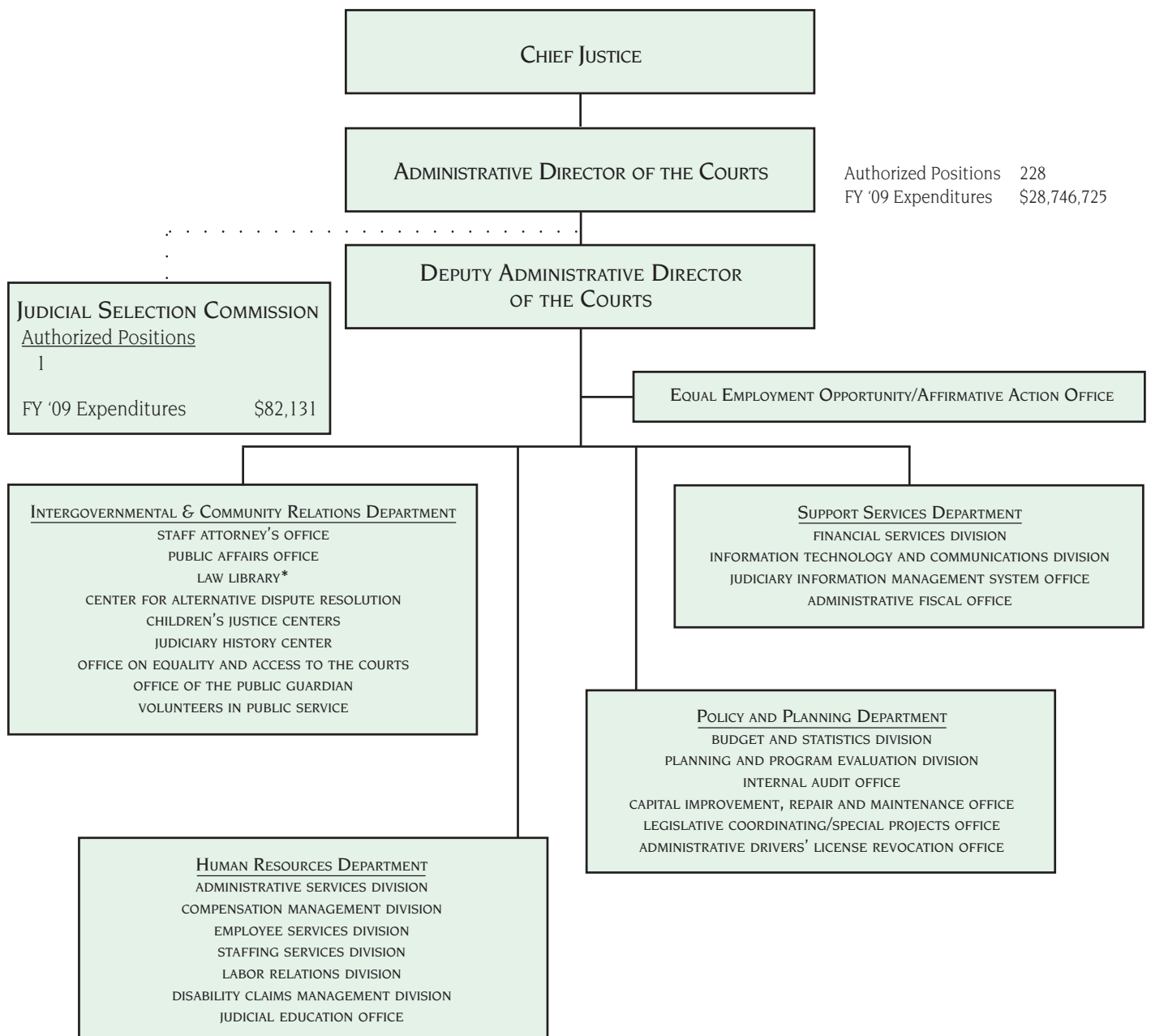
SUPPORT SERVICES 24

FINANCIAL RESOURCES 25

# Structure of the Court System



# Structure of the Office of the Administrative Director of the Courts



\* Funding reflected under Courts of Appeal

## Judicial Appointments

**Judge Rom A. Trader** had 20 years of experience as a prosecutor before becoming a First Circuit Court judge on March 27, 2009.

Nominated by Governor Linda Lingle, Judge Trader was also an adjunct professor at the University of Hawaii's William Richardson School of Law.

He earned his bachelor's and law degrees from the University of Hawaii at Manoa.

**Associate Justice Mark E. Recktenwald** was the Chief Judge of the Intermediate Court of Appeals for two years before becoming an Associate Justice on the Hawaii Supreme Court on May 11, 2009.

Prior to his appointment to the Intermediate Court of Appeals, Justice Recktenwald served as Director of the Hawaii Department of Commerce and Consumer Affairs from 2003 to 2007. He was also an Assistant U.S. Attorney for the District of Hawaii from 1991-97 and from 1999-2003, a partner at Marr Hipp Jones & Pepper (1997-1999), and an associate with Goodsill Anderson Quinn & Stifel (1988-1991).

Justice Recktenwald received a law degree from the University of Chicago Law School and an undergraduate degree from Harvard University.

**Craig H. Nakamura** was sworn in as Chief Judge of the Intermediate Court of Appeals on September 16, 2009. He graduated from Iolani School in 1974 and received his bachelor's degree from the University of Hawaii in 1978. Judge Nakamura graduated cum laude from Harvard Law School in 1981.

After law school, Judge Nakamura was a law clerk for U.S. Circuit Judge Herbert Choy and an associate with the firm of Goodsill, Anderson, Quinn & Stifel. In 1986, he became an Associate U.S. Attorney, a position he held until his appointment to the Intermediate Court of Appeals as an Associate Judge on April 8, 2004.

Judge Nakamura previously taught Appellate Advocacy as an adjunct professor at the William S. Richardson School of Law and served as a director of the Hawaii State Bar Association.

## *Judicial Departures*

### **Retired**

First Circuit Judge Reynaldo Gaulty,  
retired March 1, 2009

First Circuit Judge Karen N. Blondin,  
retired July 1, 2009

First Circuit Deputy Chief Family Court Judge Frances Q.F. Wong,  
retired November 1, 2009

First Circuit Judge Victoria S. Marks,  
retired November 1, 2009

Intermediate Court of Appeals Associate Judge Corinne K.A. Watanabe,  
retired December 31, 2009

First Circuit Chief Judge Colleen K. Hirai,  
retired December 31, 2009

First Circuit Judge Eden E. Hifo,  
retired December 31, 2009

First Circuit Family Court Judge Karen M. Radius  
retired December 31, 2009



## Courts of Appeal

### ACTIONS FILED

There were 692 primary cases filed in the Courts of Appeal during the 2008-09 fiscal year – 595 appeals and 97 original proceedings.

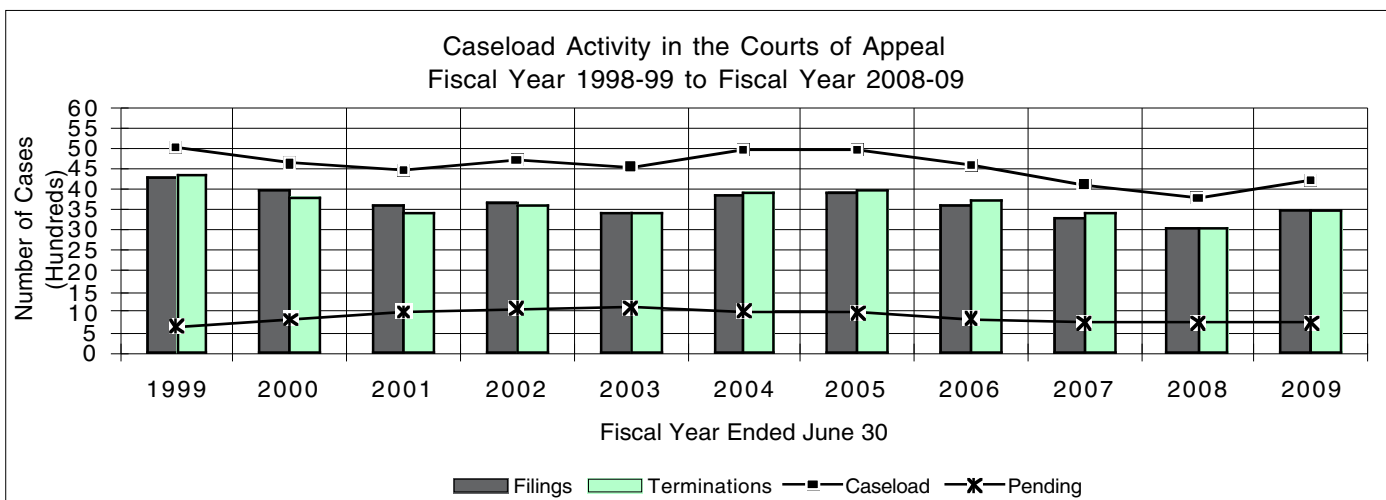
Supplemental proceedings, which arise out of primary cases, are comprised of motions, special stipulations and applications for certiorari. In fiscal year 2008-09, 2,771 supplemental proceedings were filed in the Courts of Appeal.

### STATUS OF PENDING CASES

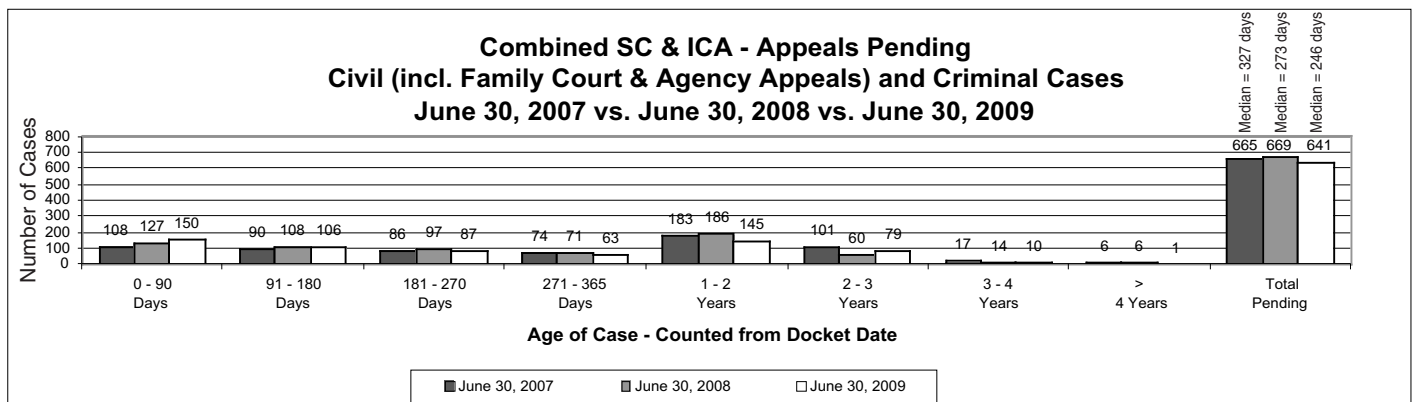
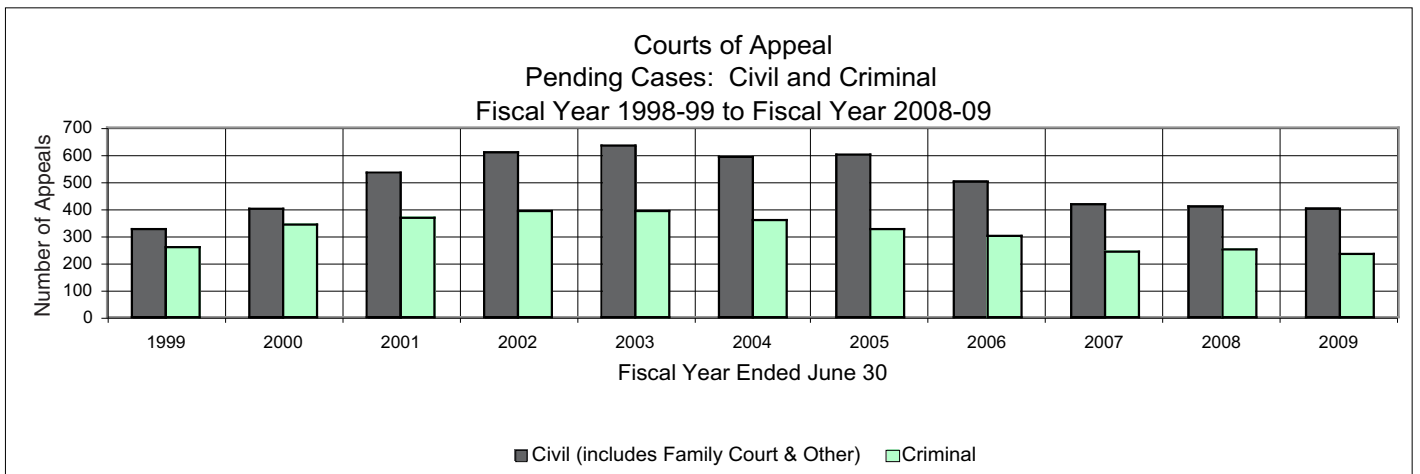
There were 658 primary cases and 79 supplemental proceedings pending in the Courts of Appeal at the end of the fiscal year. Of the 737 pending cases, 76% were being briefed, 19% were ready to be scheduled for hearing or, in the case of supplemental proceedings, ready and awaiting decision without further hearing, and 5% had been taken under advisement and were awaiting decision.

### TERMINATIONS

The Courts of Appeal terminated 712 primary cases during fiscal year 2008-09, compared to 631 primary cases terminated during the previous fiscal year. Terminations of supplemental proceedings increased from 2,434 last year to 2,745 this year.



Courts of Appeal



## Supreme Court

The Supreme Court of Hawai'i is the State's court of last resort. The Supreme Court hears appeals that are properly brought before the court upon applications for writs of certiorari to the Intermediate Court of Appeals and applications for transfer from the Intermediate Court of Appeals.

The Supreme Court also:

- hears reserved questions of law from the circuit courts, the land court, and the tax appeal court;
- hears certified questions of law from federal courts;
- hears applications for writs to judges and other public officers;
- hears complaints regarding elections;
- makes rules of practice and procedure for all state courts;
- licenses, regulates, and disciplines attorneys; and
- disciplines judges.

Each appeal is decided on the basis of the written record. In some cases, the court may hear oral arguments. The court takes no evidence, except in original proceedings. Each justice, or a substitute from the Intermediate Court of Appeals or the Circuit Court, participates in every substantive matter before the court.

The Supreme Court is composed of a Chief Justice and four Associate Justices. Justices are nominated by the Governor from a list of not less than four and not more than six names submitted by the Judicial Selection Commission. A justice's nomination is subject to confirmation by the State Senate. Each justice is initially appointed for a ten-year term. To be considered for appointment, a person must be a resident and a citizen of the state and of the United States and licensed to practice law by the Supreme Court of Hawai'i for not less than ten years preceding their nomination. After initial appointment, the Judicial Selection Commission determines whether a justice will be retained in office. A justice may not serve past age 70.

The members of the Supreme Court are Chief Justice Ronald T. Y. Moon and Associate Justices Paula A. Nakayama, Simeon R. Acoba, Jr., James E. Duffy, Jr. and Mark E. Recktenwald

Supreme  
Court

**ACTIONS FILED**

During fiscal year 2008-09, 127 primary cases were filed in the Supreme Court. There were also 301 supplemental proceedings filed before the Supreme Court.

**TERMINATIONS**

Terminations of primary cases decreased from last fiscal year – 162 cases to 127.

**STATUS OF PENDING CASES**

At the end of the fiscal year, 28 primary cases and 35 supplemental proceedings were pending. All pending supplemental proceedings were complete and awaiting decision.

**JUSTICES AND THEIR TERMS**

CHIEF JUSTICE RONALD T.Y. MOON

*March 31, 2003 - March 30, 2013*

ASSOCIATE JUSTICE PAULA A. NAKAYAMA

*April 22, 2003 - April 21, 2013*

ASSOCIATE JUSTICE SIMEON R. ACOBA, JR.

*May 19, 2000 - May 18, 2010*

ASSOCIATE JUSTICE JAMES E. DUFFY, JR.

*June 27, 2003 - June 26, 2013*

ASSOCIATE JUSTICE MARK E. RECKTENWALD

*May 11, 2009 - May 10, 2019*

## *Intermediate Court of Appeals*

The Intermediate Court of Appeals (ICA) hears nearly all appeals from trial courts and some agencies in the State of Hawai'i. The ICA is composed of six judges who sit on panels of three. Judges are nominated by the Governor from a list of not less than four and not more than six names submitted by the Judicial Selection Commission. A judge's nomination is subject to confirmation by the State Senate. Each judge is initially appointed for a ten-year term. After initial appointment, the Judicial Selection Commission determines whether a judge will be retained in office. A judge may not serve past age 70.

The Intermediate Court of Appeals has discretionary authority to entertain cases submitted without a prior suit when there is a question of law that could be the subject of a civil action or a proceeding in the Circuit Court or Tax Appeal Court, and the parties agree upon the facts upon which the controversy depends.

Cases in the Intermediate Court of Appeals may be transferred to the Hawai'i Supreme Court upon application to the Supreme Court under circumstances set out in the Hawai'i Revised Statutes. The ICA's judgments on appeal and dismissal orders are subject to the Hawai'i Supreme Court's discretionary review by way of an application for a writ of certiorari.

The current members of the Intermediate Court of Appeals are Chief Judge Craig H. Nakamura, and Associate Judges Daniel R. Foley, Alexa D. M. Fujise and Katherine G. Leonard. Mark E. Recktenwald was elevated to the Hawai'i Supreme Court on May 11, 2009 and Corinne K.A. Watanabe retired on December 31, 2009, leaving two vacancies on the court.

*Intermediate  
Court of Appeals*

**ACTIONS FILED**

A total of 570 primary cases and 2,470 supplemental proceedings were assigned to the ICA in fiscal year 2008-09. Primary cases are assigned from the Supreme Court, while supplemental proceedings may be filed directly with the ICA or transferred from the Supreme Court.

**TERMINATIONS**

During fiscal year 2008-09, the ICA terminated 82% of its total caseload. This figure includes 590 primary cases and 2,463 supplemental proceedings.

**STATUS OF PENDING CASES**

At the end of the 2008-09 fiscal year, 630 primary cases and 44 supplemental cases were pending, representing 18% of the total caseload for the year.

**JUDGES AND THEIR TERMS**

CHIEF JUDGE - CRAIG H. NAKAMURA  
*April 8, 2004 - April 7, 2014*

ASSOCIATE JUDGE CORINNE K.A. WATANABE  
*Retired December 31, 2009*

ASSOCIATE JUDGE KATHERINE G. LEONARD  
*January 30, 2008 - January 29, 2018*

ASSOCIATE JUDGE DANIEL R. FOLEY  
*October 2, 2000 - October 1, 2010*

ASSOCIATE JUDGE ALEXA D.M. FUJISE  
*June 10, 2004 - June 9, 2014*

2 VACANT POSITIONS AS OF  
*December 31, 2009*

## Land Court

### DESCRIPTION

The Land Court has exclusive statewide jurisdiction over the registration of title to real property and over all disputes that may arise after title registration. Also, the court has jurisdiction over matters pertaining to the Land Court Registration law (Chapter 501, Hawai'i Revised Statutes).

The Land Court judge sits in Honolulu but hears cases brought from all islands.

### ACTIONS FILED

In fiscal year 2008-09, 275 cases were filed in the Land Court. Combined with the 65 cases pending at the end of the last fiscal year, the Land Court handled a total caseload of 340 cases.

In addition, the Land Court processed 4,436 ex parte petitions during fiscal year 2009.

### TERMINATIONS AND PENDING CASES

Seventy-one cases were terminated during fiscal year 2008-09, leaving 269 cases pending at the start of the new fiscal year.

## Tax Appeal Court

### DESCRIPTION

The Tax Appeal Court has exclusive jurisdiction to hear appeals under state laws, including, but not limited to, income tax, general excise tax, franchise tax and real property taxations directly from assessments and/or from the Boards of Review.

Like the Land Court, the Tax Appeal Court judge sits in Honolulu but hears cases brought from all islands.

### ACTIONS FILED

In fiscal year 2008-09, 102 cases were filed in the Tax Appeal Court. Combined with the 372 pending cases at the end of the last fiscal year, the Tax Appeal Court's total caseload was 474 cases.

### TERMINATIONS AND PENDING CASES

The Tax Appeal Court terminated a total of 206 cases, or 43% of the court's caseload, during the 2008-09 fiscal year. At the close of the fiscal year, 268 cases remained pending.

## Trial Courts

Hawaii's trial level is comprised of Circuit Courts and District Courts. Family Courts are included in the Circuit Courts. Hawaii's trial courts function in four circuits that correspond approximately to the geographical areas served by the counties.

The First Circuit serves the City and County of Honolulu.

The Second Circuit serves the County of Maui, which includes the islands of Maui, Moloka'i and Lāna'i.

The Third Circuit, divided into the districts of Hilo and Kona, administers the County of Hawai'i.

The Fourth Circuit is no longer used as a circuit designation. The Third and Fourth Circuits merged in 1943.

The Fifth Circuit serves the County of Kaua'i, which includes the islands of Kaua'i and Ni'ihau.



## Circuit Courts

### STRATEGIC MISSION

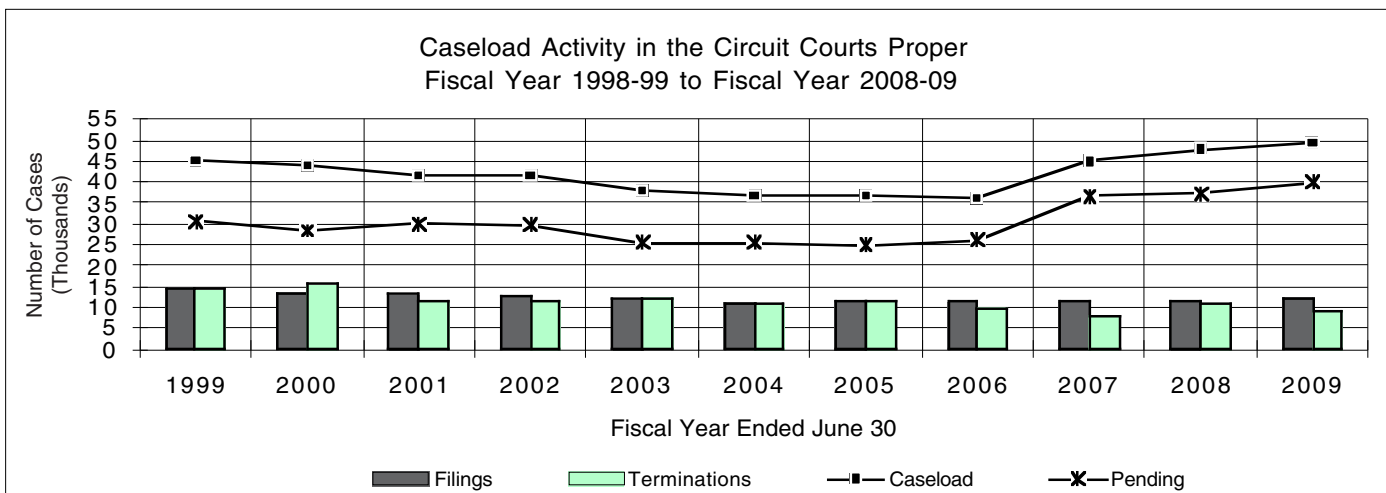
The mission of the Circuit Court is to expeditiously and fairly adjudicate or resolve all matters within its jurisdiction in accordance with the law.

### DESCRIPTION

All jury trials are held in the Circuit Courts, which have general jurisdiction in civil and criminal cases. They also have exclusive jurisdiction in probate, guardianship and criminal felony cases, as well as civil cases where the contested amount exceeds \$25,000. Circuit Courts share concurrent jurisdiction with District

Courts in civil non-jury cases that specify amounts between \$10,000 and \$25,000. Additional cases dispensed by the Circuit Courts include mechanics' liens and misdemeanor violations transferred from the District Courts for jury trials.

Circuit Court judges are appointed to ten-year terms by the Governor from a list of not less than four and not more than six nominees provided by the Judicial Selection Commission. The nominees are subject to confirmation by the State Senate.



Circuit  
Courts

**ACTIONS FILED**

Filings in the Circuit Courts proper totaled 12,347 cases in fiscal year 2008-09. Of the cases filed, 4,972, or 40%, were civil cases; and 4,205, or 34%, were criminal cases.

**TERMINATIONS**

During fiscal year 2008-09, the Circuit Courts terminated 9,402 cases.

**STATUS OF PENDING CASES**

At the end of the 2008-09 fiscal year, a total of 40,012 cases were pending in the Circuit Courts proper. This includes 2,772 inactive criminal cases and 5,835 criminal cases on deferred status.

**ADULT PROBATION DIVISIONS**

There were 4,119 investigations completed during fiscal year 2008-09. In supervision cases, where persons were placed on probation or subject to court-ordered control, including offenders released from the Hawai'i State Hospital, there were 5,983 new placements added to the 19,350 cases pending from the previous fiscal year. Of these, 4,747 cases were closed, leaving 20,586 open at the end of the 2008-09 fiscal year.

## Circuit Court Judges and Their Terms

### FIRST CIRCUIT

KARL K. SAKAMOTO, 1<sup>ST</sup> DIVISION  
*June 1, 2000 - May 31, 2010*

STEVEN S. ALM, 2<sup>ND</sup> DIVISION  
*May 14, 2001 - May 13, 2011*

3<sup>RD</sup> DIVISION - VACANT  
VICTORIA S. MARKS  
*Retired July 1, 2009*

GLENN J. KIM, 4<sup>TH</sup> DIVISION  
*April 30, 2007 - April 29, 2017*

5<sup>TH</sup> DIVISION - VACANT  
EDEN ELIZABETH HIFO  
*Retired December 31, 2009*

MICHAEL D. WILSON, 6<sup>TH</sup> DIVISION  
*May 10, 2000 - May 9, 2010*

RICHARD W. POLLACK, 7<sup>TH</sup> DIVISION  
*May 10, 2000 - May 9, 2010*

RICHARD K. PERKINS, 8<sup>TH</sup> DIVISION  
DEPUTY CHIEF JUDGE  
CRIMINAL DIVISION  
*May 6, 2004 - May 5, 2014*

VIRGINIA LEA CRANDALL, 9<sup>TH</sup> DIVISION  
*April 1, 2001 - March 31, 2011*

RHONDA A. NISHIMURA, 10<sup>TH</sup> DIVISION  
*June 20, 2003 - June 19, 2013*

KAREN S. S. AHN, 11<sup>TH</sup> DIVISION  
*May 10, 2000 - May 9, 2010*

RANDAL K. O. LEE, 12<sup>TH</sup> DIVISION  
*April 22, 2005 - April 21, 2015*

DEXTER D. DEL ROSARIO, 13<sup>TH</sup> DIVISION  
*April 15, 2004 - April 14, 2014*

GARY W. B. CHANG, 14<sup>TH</sup> DIVISION  
*June 1, 2009 - May 31, 2019*

15<sup>TH</sup> DIVISION - VACANT  
KAREN N. BLONDIN  
*Retired November 1, 2009*

PATRICK W. BORDER, 16<sup>TH</sup> DIVISION  
*April 8, 2004 - April 7, 2014*

ROM A. TRADER, 17<sup>TH</sup> DIVISION  
*March 27, 2009 - March 26, 2019*  
REYNALDO D. GRAULTY  
*Retired March 1, 2009*

18<sup>TH</sup> DIVISION - VACANT  
FRANCES Q.F. WONG  
*Retired November 1, 2009*

MICHAEL A. TOWN, 19<sup>TH</sup> DIVISION  
*April 30, 2003 - April 29, 2013*

20<sup>TH</sup> DIVISION - VACANT  
COLLEEN K. HIRAI  
*Retired December 31, 2009*

BERT I. AYABE, 21<sup>ST</sup> DIVISION  
DEPUTY CHIEF JUDGE  
CIVIL DIVISION  
*June 10, 2004 - June 9, 2014*

SABRINA S. MCKENNA, 22<sup>ND</sup> DIVISION  
DEPUTY CHIEF JUDGE  
FAMILY COURT  
*June 30, 2005 - June 29, 2015*

DERRICK H. M. CHAN, 23<sup>RD</sup> DIVISION  
CHIEF JUDGE  
*August 25, 2000 - August 24, 2010*

*Circuit Court Judges  
and Their Terms*

**SECOND CIRCUIT**

SHACKLEY F. RAFFETTO, 1<sup>ST</sup> DIVISION  
CHIEF JUDGE/SENIOR FAMILY COURT JUDGE  
*June 9, 2004 - June 8, 2014*

JOEL E. AUGUST, 2<sup>ND</sup> DIVISION  
*June 10, 2002 - June 9, 2012*

JOSEPH E. CARDOZA, 3<sup>RD</sup> DIVISION  
*June 24, 2009 - June 23, 2019*

RICHARD T. BISSEN, JR., 4<sup>TH</sup> DIVISION  
*April 29, 2005 - April 28, 2015*

**THIRD CIRCUIT**

GREG K. NAKAMURA, 1<sup>ST</sup> DIVISION  
DEPUTY CHIEF JUDGE/  
SENIOR FAMILY COURT JUDGE  
*April 18, 2004 - April 17, 2014*

GLENN S. HARA, 2<sup>ND</sup> DIVISION  
*June 25, 2004 - June 24, 2014*

RONALD IBARRA, 3<sup>RD</sup> DIVISION  
CHIEF JUDGE  
*May 10, 2009 - May 9, 2019*

ELIZABETH A. STRANCE, 4<sup>TH</sup> DIVISION  
*March 31, 2005 - March 30, 2015*

**FIFTH CIRCUIT**

RANDAL G.B. VALENCIANO, 1<sup>ST</sup> DIVISION  
CHIEF JUDGE/SENIOR FAMILY COURT JUDGE  
*June 14, 2007 - June 13, 2017*

KATHLEEN N. A. WATANABE, 2<sup>ND</sup> DIVISION  
*August 17, 2005 - August 16, 2015*

## Family Courts

### STRATEGIC MISSION

The mission of the Family Court is to provide a fair, speedy, economical and accessible forum for the resolution of matters involving families and children.

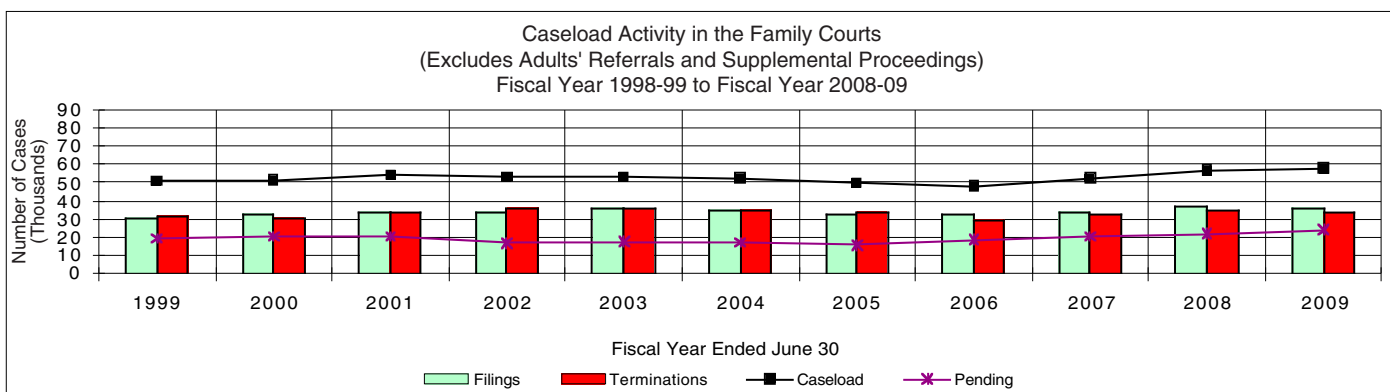
### DESCRIPTION

The Family Courts were established by statute in 1965 to deal with virtually all legal problems impacting Hawaii's families and children.

The Family Court hears all legal matters involving children, such as delinquency, waiver, status offenses,

abuse and neglect, termination of parental rights, adoption, guardianships and detention. The Family Court also hears traditional domestic relations cases, including divorce, nonsupport, paternity, uniform child custody jurisdiction cases and miscellaneous custody matters.

District Family Court judges are appointed to six-year terms by the Chief Justice from a list of at least six names submitted for each opening by the Judicial Selection Commission, subject to confirmation by the State Senate.



*Family  
Courts*

**ACTIONS FILED**

A total of 36,494 cases were filed in the Family Courts in fiscal year 2008-09.

**TERMINATIONS**

Terminations totaled 33,605 in fiscal year 2008-09.

**STATUS OF PENDING CASES**

There were 24,319 cases pending at the end of fiscal year 2008-09.

## Family Court Judges and Their Terms

### FIRST CIRCUIT

SABRINA S. MCKENNA,  
FIRST CIRCUIT COURT  
22<sup>ND</sup> DIVISION  
DEPUTY CHIEF JUDGE  
*June 30, 2005 - June 29, 2015*

PATRICK W. BORDER,  
FIRST CIRCUIT COURT  
16<sup>TH</sup> DIVISION  
*April 8, 2004 - April 7, 2014*

RHONDA A. NISHIMURA,  
FIRST CIRCUIT COURT  
10<sup>TH</sup> DIVISION  
*June 20, 2003 - June 19, 2013*

MICHAEL F. BRODERICK  
*June 6, 2009 - June 5, 2015*

R. MARK BROWNING  
*June 6, 2009 - June 5, 2015*

JENNIFER L. CHING  
*June 24, 2005 - June 23, 2011*

KENNETH E. ENRIGHT  
*February 28, 2009 - February 27, 2015*

CHRISTINE E. KURIYAMA  
*May 20, 2004 - May 19, 2010*

LINDA K. C. LUKE  
*December 29, 2004 - December 28, 2010*

PAUL T. MURAKAMI  
*June 7, 2008 - June 6, 2014*

KAREN M. RADIUS  
*Retired December 31, 2009*

BODE A. UALE  
*October 27, 2004 - October 26, 2010*

### SECOND CIRCUIT

SHACKLEY F. RAFFETTO,  
SECOND CIRCUIT COURT, 1<sup>ST</sup> DIVISION  
CHIEF JUDGE  
*June 9, 2004 - June 8, 2014*

KEITH E. TANAKA  
*March 9, 2007 - March 8, 2013*

GERONIMO VALDRIZ, JR.  
*May 26, 2006 - May 25, 2012*

### THIRD CIRCUIT

GREG K. NAKAMURA,  
THIRD CIRCUIT COURT, 1<sup>ST</sup> DIVISION  
DEPUTY CHIEF JUDGE  
*April 18, 2004 - April 17, 2014*

ALEY K. AUNA, JR.  
*April 4, 2006 - April 3, 2012*

ANTHONY K. BARTHOLOMEW  
*June 6, 2008 - June 5, 2014*

MELVIN H. FUJINO  
*December 19, 2008 - December 18, 2014*

LLOYD X. VAN DE CAR  
*June 1, 2007 - May 31, 2013*

### FIFTH CIRCUIT

RANDAL G.R. VALENCIANO,  
FIFTH CIRCUIT COURT, 1<sup>ST</sup> DIVISION  
CHIEF JUDGE  
*June 14, 2007 - June 13, 2017*

CALVIN K. MURASHIGE  
*June 25, 2005 - June 24, 2011*

## District Courts

### STRATEGIC MISSION

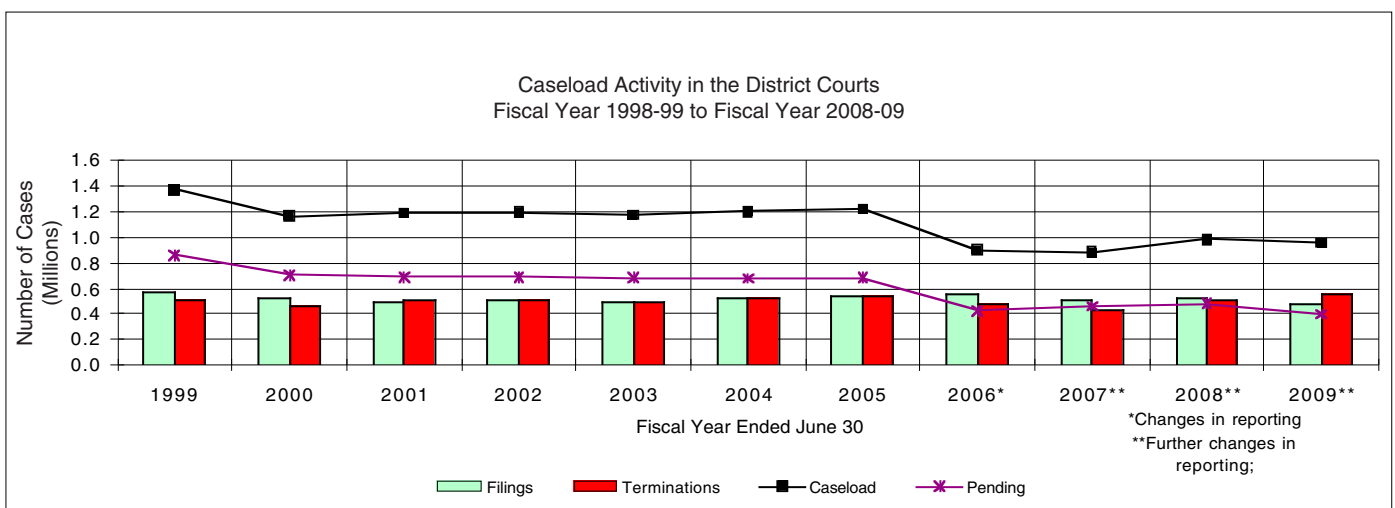
The mission of the District Court is to serve the people of Hawai'i through the fair and efficient adjudication and resolution of cases and controversies brought before it.

### DESCRIPTION

The District Courts have exclusive jurisdiction over traffic infractions and summary possession or ejection proceedings (landlord-tenant), regardless of the claim amount. The District Courts also have jurisdiction over non-jury trial civil cases where the debt, amount, damages or value of the property claimed

does not exceed \$25,000, or where the remedy sought is specific performance valued under \$25,000, criminal offenses punishable by fine or by imprisonment not exceeding one year, cases arising from violations of a county ordinance, and petitions for restraining orders for relief from and for injunctions against harassment.

District Court judges are appointed to six-year terms by the Chief Justice from a list of at least six names submitted for each opening by the Judicial Selection Commission, subject to confirmation by the State Senate.





## District Courts

### **CASELOAD ACTIVITY (EXCLUDING TRAFFIC)**

#### **ACTIONS FILED**

During the 2008-09 fiscal year, 56,818 cases were filed in the District Courts. Civil actions represented approximately 44% of filings, criminal actions 51% and other violations 5%.

#### **TERMINATIONS**

A total of 48,242 cases were terminated in the District Courts during the fiscal year.

#### **PENDING CASES**

There were 92,917 cases pending at the end of fiscal year 2008-09.

### **CASELOAD ACTIVITY (TRAFFIC AND PARKING)**

A criminal traffic case involving multiple offenses is counted as one case, beginning in fiscal year 2006-07.

New Filings:	423,847 cases
Dispositions - Entry of Judgment:	508,675 cases
Active Pending Cases:	220,684 cases
Inactive Pending Cases:	84,159 cases

*District Court Judges  
and Their Terms*

**FIRST CIRCUIT**

COLETTE Y. GARIBALDI  
DEPUTY CHIEF JUDGE  
*February 28, 2009 - February 27, 2015*

WILLIAM A. CARDWELL  
*May 20, 2004 - May 19, 2010*

HILARY BENSON GANGNES  
*May 22, 2008 - May 21, 2014*

LESLIE ANN HAYASHI  
*November 5, 2008 - November 4, 2014*

GERALD H. KIBE  
*January 6, 2007 - January 5, 2013*

FAYE M. KOYANAGI  
*June 10, 2009 - June 9, 2015*

LONO J. LEE  
*June 10, 2009 - June 9, 2015*

DAVID W. LO  
*August 23, 2006 - August 22, 2012*

CHRISTOPHER P. MCKENZIE  
*May 22, 2008 - May 21, 2014*

EDWIN C. NACINO  
*May 6, 2005 - May 5, 2011*

RUSSEL S. NAGATA  
*October 5, 2004 - October 4, 2010*

CLARENCE A. PACARRO  
*June 7, 2008 - June 6, 2014*

BARBARA P. RICHARDSON  
*May 5, 2006 - May 4, 2012*

FA'AUUGA TO'OTO'O  
*December 9, 2006 - December 8, 2012*

**SECOND CIRCUIT**

RHONDA I. L. LOO  
DEPUTY CHIEF JUDGE  
*May 1, 2009 - April 30, 2015*

KELSEY T. KAWANO  
*August 29, 2008 - August 28, 2014*

SIMONE C. POLAK  
*May 28, 2004 - May 27, 2010*

**THIRD CIRCUIT**

JOSEPH P. FLORENDO, JR.  
DEPUTY CHIEF JUDGE  
*November 3, 2004 - November 2, 2010*

HARRY P. FREITAS  
*June 1, 2007 - May 31, 2013*

BARBARA T. TAKASE  
*May 26, 2004 - May 25, 2010*

**FIFTH CIRCUIT**

TRUDY K. SENDA  
DEPUTY CHIEF JUDGE  
*May 4, 2007 - May 3, 2013*

*Per Diem  
Judges*

**FIRST CIRCUIT**

Patricia C. Aburano  
Jeannette H. Castagnetti  
Gale L.F. Ching  
Darryl Y. C. Choy  
James H. Dannenberg  
Paula Devens  
Philip M. Doi  
Peter C.K. Fong  
James H. Hershey  
Lenore K.J.H. Lee  
Wilson M.N. Loo  
Michael A. Marr  
Linda S. Martell  
William J. Nagle, III  
Alvin K. Nishimura  
Blake T. Okimoto  
Catherine H. Remigio  
Nancy Ryan  
Randal I. Shintani  
Clyde E. Sumida  
Matthew J. Viola  
Timothy David Woo, Jr.

**SECOND CIRCUIT**

Jan K. Apo  
Mimi Desjardins  
Michelle L. Drewyer  
Renata E. Foster-Au  
Paul L. Horikawa  
Barclay E. MacDonald  
Lloyd A. Poelman  
Richard A. Priest, Jr.  
Eric G. Romanchak  
Douglas J. Sameshima

**THIRD CIRCUIT**

Sarah R. Crawford  
Ben H. Gaddis  
Steven J. Kim  
David K. Kuwaharall  
William E. Smith  
Andrew P. Wilson

**FIFTH CIRCUIT**

Max W.J. Graham, Jr.  
Walton D.Y. Hong  
Joseph N. Kobayashi  
Laurel Loo  
Joe P. Moss  
Frank D. Rothschild

## Support Services

### STRATEGIC MISSION

The mission of the Office of the Administrative Director of the Courts is to promote the administration of justice in Hawai'i by providing professional, responsive administrative support to the Chief Justice, the courts and Judiciary programs and to expedite, facilitate and enhance the mission of the Judiciary.

### ADMINISTRATION

The Office of the Administrative Director of the Courts has the primary responsibility for daily operations of the court system. The Administrative Director is appointed by the Chief Justice with the approval of the Supreme Court, and is assisted by the Deputy Administrative Director.

The Equal Employment Opportunity and Affirmative Action Office is attached to the Deputy Administrative Director.

Administrative programs are divided into four departments. The Intergovernmental and Community Relations Department includes: Staff Attorney, Public Affairs, King Kamehameha V Judiciary History Center, Children's Justice Centers, Law Library, Center for Alternative Dispute Resolution, Equality and Access to the Courts, Office of the Public Guardian and Volunteers in Public Service. The Support Services Department includes: Financial Services, Information Technology and Communications, Judiciary Information Management System, and Admin Fiscal. The Policy and Planning Department includes: Budget and Statistics, Planning and Program Evaluation, Internal Audit, Administrative Driver's License Revocation Office and Special Projects/Legislative Office. The Human Resources Department includes: Administrative Services, Compensation Management, Employee Services, Labor Relations, Staffing Services, Disability Claims Management and Judicial Education.

## *Financial Resources*

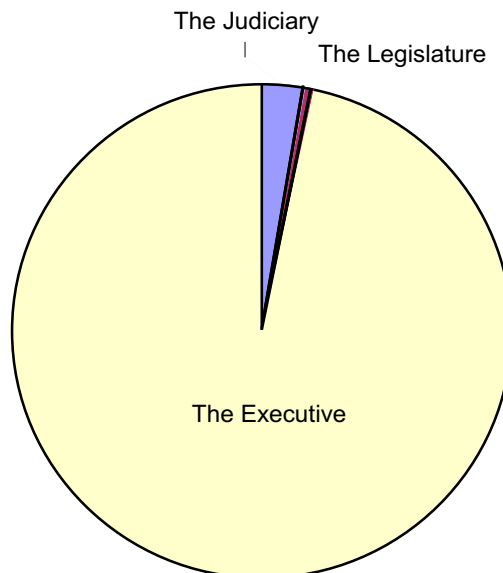
Appropriations for the Hawai'i State Judiciary are made by the Legislature on a statewide basis, with each fiscal year beginning July 1 and ending June 30. Both the operating and capital improvements budgets of the Judiciary are legislatively determined each biennium with operating monies allocated from the State General and Special Funds and capital improvement monies from the State Capital Project Fund.

Combined, the State General and the Capital Project Funds represent over 96 percent of the funding source of all Judiciary expenditures. The Legislature appropriated \$150,455,630 from the State General Fund for operations during the current fiscal year, which constitutes just 2.65% of the total state general fund appropriations. Other operating monies come from federal funds, trust funds and special revenue funds, such as the Driver Education and Training Fund.

Financial Resources

<b>THE JUDICIARY OPERATING FUNDS FISCAL YEARS 2008-2011 BUDGET SUMMARY</b>				
PROGRAM	FY 2008	FY 2009	Biennium Budget Appropriations*	
	Actual Expenditures	Actual Expenditures	FY 2010	FY 2011
JUD 101 - COURTS OF APPEAL				
General Fund	7,048,172	7,694,130	6,916,577	6,910,423
Revolving Fund	20,856	13,734	243,261	243,261
JUD 310 - FIRST JUDICIAL CIRCUIT				
General Fund	73,721,014	75,779,778	71,366,471	71,400,670
Special Fund	3,050,120	3,187,814	3,777,131	3,910,342
JUD 320 - SECOND JUDICIAL CIRCUIT				
General Fund	14,354,844	14,806,275	14,769,855	14,763,619
JUD 330 - THIRD JUDICIAL CIRCUIT				
General Fund	17,371,144	18,438,046	17,440,558	17,430,206
JUD 350 - FIFTH JUDICIAL CIRCUIT				
General Fund	7,008,750	7,108,875	6,699,347	6,695,034
JUD 501 - JUDICIAL SELECTION COMMISSION				
General Fund		82,131	91,284	91,232
JUD 610 - ADMINISTRATION				
General Fund	24,123,250	23,976,530	21,727,908	21,721,296
Special Fund	5,422,624	4,757,775	8,396,900	6,930,290
Revolving Fund	21,453	12,420	100,000	100,000
TOTALS				
General Fund	143,627,174	147,885,765	139,012,000	139,012,480
Special Fund	8,472,744	7,945,589	12,174,031	10,840,632
Revolving Fund	42,309	26,154	343,261	343,261

\* Subject to final legislative review.



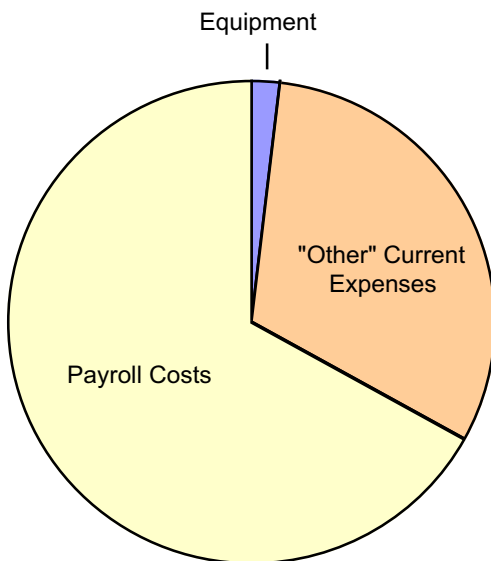
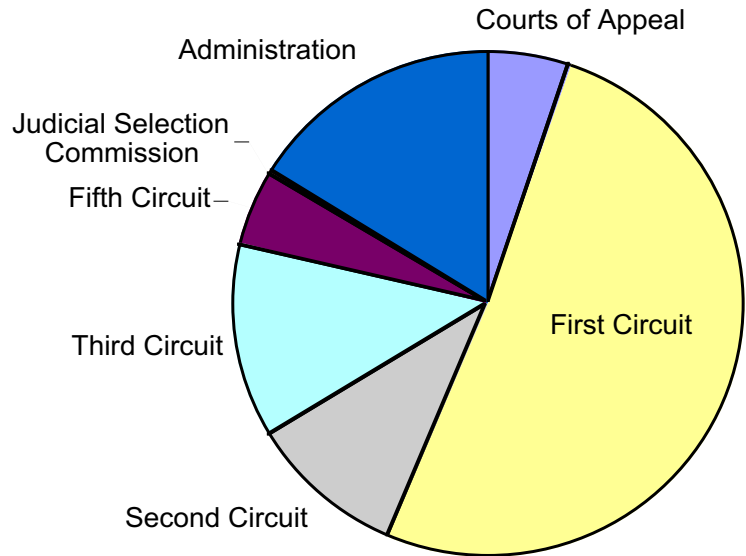
TOTAL STATE GOVERNMENT APPROPRIATIONS FROM STATE GENERAL FUND FISCAL YEAR 2008-09

The Judiciary	2.65%	\$ 150,445,630
The Legislature	.60%	34,019,636
The Executive	96.75%	5,498,528,169
<b>Total</b>		<b>\$ 5,682,993,435</b>

Financial Resources

STATE GENERAL FUND EXPENDITURES  
BY COURT ELEMENT  
FISCAL YEAR 2008-09

Courts of Appeal	5.2%	\$ 7.7 million
First Circuit	51.2%	75.8 million
Second Circuit	10.0%	14.8 million
Third Circuit	12.5%	18.4 million
Fifth Circuit	4.8%	7.1 million
Judicial Selection Commission	.1%	.1 million
Administration	16.2%	24.0 million
<b>Total</b>		<b>\$ 147.9 million</b>



STATE GENERAL FUND EXPENDITURES  
BY COST CATEGORY  
FISCAL YEAR 2008-09

Equipment	2%	\$ 2.2 million
"Other" Current Expenses	31%	45.9 million
Payroll Costs	67%	99.8 million
<b>Total</b>		<b>\$ 147.9 million</b>